



6 Hodges Street, Redwood Park


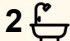
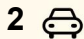
## Your Next Address!

Constructed in 1980 and set on an allotment of approximately 580 SQM, this beautifully maintained home has undergone stylish, modern updates throughout and boasts some of the best hedges and lawns in Redwood Park.

Equally as impressive inside, the home has been lovingly cared for and presents a true move-in ready opportunity, allowing the lucky new owner to simply start living and enjoying everything this home and location have to offer!

Features you will love:

- Three bedrooms all with ceiling fans and automatic roller shutter blinds
- Master bedroom with walk-in robe and updated ensuite
- Bedrooms 2 and 3 with built-in robes
- Flexible floor plan with dual living areas
- Central kitchen with breakfast bar, dishwasher, electric cooktop, oven and ample bench space
- LED downlights throughout the home
- Sufficient storage with two hallway linen cupboards
- Solar system installed approx. 6.6KW
- Year-round comfort with ducted reverse cycle heating and cooling
- Detached studio / office with storage area, the ideal home office or

3  2  2 

**FOR SALE**

Please Call

**AGENTS**

Ryan Graham  
0400 912 287  
ryang@ljhsales.com.au

Robert Bonelli  
0497 808 908  
robertb@ljhsales.com.au

**AGENCY**

LJ Hooker Property Specialists  
(08) 8289 6660

All information contained therein is gathered from relevant third parties sources.  
We cannot guarantee or give any warranty about the information provided.  
Interested parties must rely solely on their own enquiries.

 **LJ Hooker**

- retreat with split system heating / cooling installed
- " Immaculate front and rear gardens with irrigation installed
- " Large pitched roof entertainment area with café blinds, ceiling fan and space heaters; the ideal spot to host the family BBQ!
- Ample off-street parking with double driveway and single carport with automatic roller door

It's easy to see why our owners have loved calling 6 Hodges Street home, and we are sure you will too!

Enjoy all the benefits that come with living in this sought-after location, with the convenience of major shopping at Westfield Tea Tree Plaza just moments away, as well as local shopping at Surrey Downs Shopping Centre and Redwood Park IGA. Within close proximity to Civic Park, Modbury Hospital, the O-Bahn and several quality public and private schools.

With quality family homes in short supply, this one simply won't last, do not miss your opportunity to secure this gem!

All information provided has been obtained from sources we believe to be accurate, however, we cannot guarantee the information is accurate and we accept no liability for any errors or omissions (including but not limited to a property's land size, floor plans and size, building age and condition). Interested parties should make their own enquiries and obtain their own legal and financial advice. Should this property be scheduled for auction, the Vendor's Statement may be inspected at our LJ Hooker Property Specialists Real Estate office for 3 consecutive business days immediately preceding the auction and at the auction for 30 minutes before it starts.  
RLA 208516

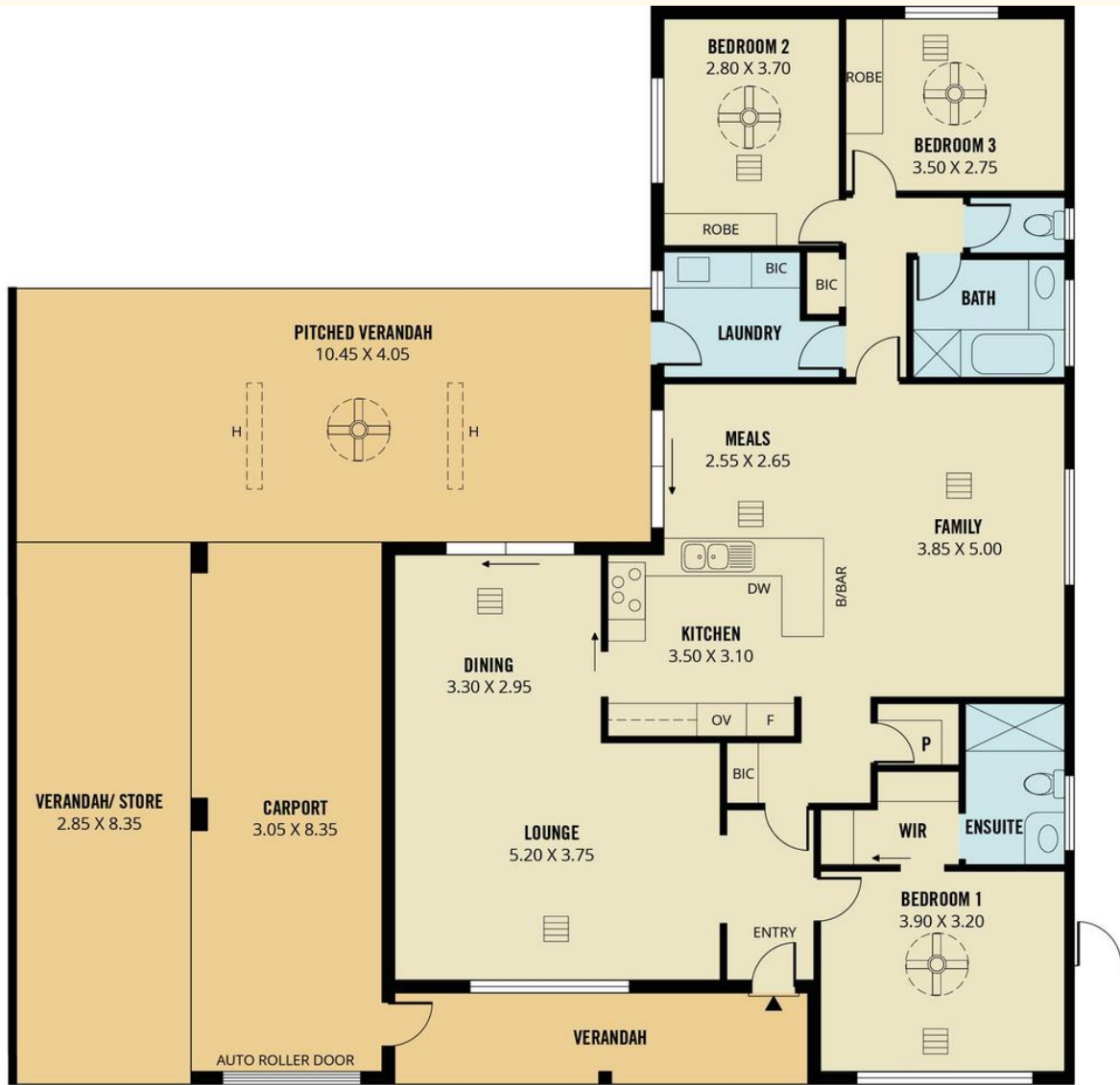
## MORE DETAILS

Property ID	2DDJGJU
Property Type	House
House Size	155 m2
Land Area	580 m2

**Ryan Graham 0400 912 287**  
Sales Specialist | [ryang@ljhsales.com.au](mailto:ryang@ljhsales.com.au)  
**Robert Bonelli 0497 808 908**  
Sales Specialist | [robertb@ljhsales.com.au](mailto:robertb@ljhsales.com.au)

**LJ Hooker Property Specialists (08) 8289 6660**  
Shop 2, 1007 North East Road, RIDGEHAVEN SA 5097  
[propertyspecialists.ljhooker.com.au](http://propertyspecialists.ljhooker.com.au) | [info@ljhsupport.com.au](mailto:info@ljhsupport.com.au)





Scale in metres. This drawing is for illustration purposes only. All measurements are approximate and details intended to be relied upon should be independently verified.

Produced by The Fotobase Group