

## Redwood Park, 333 Grenfell Road

Your Forever Home

5 3 2 1

Auction Location: On-site

Awaiting you at 333 Grenfell Road, Redwood Park is a home catering to the larger families and entertainers in you! Featuring a flexible floorplan, expertly designed for big families this one features an abundance of living spaces both indoor and outdoor, front and back this one is sure to impress.

Features you will love:

- \* Master Bedroom with all the amenities including, updated ensuite, walk in robe, ceiling fan and parents retreat!
- \* Bedroom 2 inclusive of its own updated ensuite
- \* Large updated main bathroom with spa bath
- \* Bedroom 5/rumpus/games has the facilities and functionality to be what you make it
- \* Light filled front formal lounge and dining with beautiful raked ceiling

**For Sale**

Auction (\$749,000)

**View**

[ljhooker.com.au/29YAGJU](http://ljhooker.com.au/29YAGJU)

**Contact**

**Robert Bonelli**

0497 808 908

[robertb@ljhsales.com.au](mailto:robertb@ljhsales.com.au)



**Disclaimer:** All information contained therein is gathered from relevant third parties sources.

We cannot guarantee or give any warranty about the information provided. Interested parties must rely solely on their own enquiries.

**LJ Hooker Greenwith | Golden Grove  
| Mawson Lakes | Modbury  
(08) 8289 6660**

- \* Updated kitchen fitted with stone benchtops, gas cooktop, stainless steel appliances, island bench space, walk in pantry and skylight
- \* Centrally located family and meals space opening up to backyard
- \* Beautiful decked entertaining precinct with pitched pergola over the tiled salt chlorinated, heated pool and spa
- \* Private uninterrupted views of the Adelaide CBD
- \* Personal courtyard at the front of the home
- \* Solar panels also included

This one has everything you need and more in spades. With plenty of space for the whole family to enjoy, this is the forever home you have been looking for! All major amenities are only moments away, plus the convenience of public transport virtually on your doorstep, the only thing left to do is move in, add your finishing touches and make it your own today!

All information provided has been obtained from sources we believe to be accurate, however, we cannot guarantee the information is accurate and we accept no liability for any errors or omissions (including but not limited to a property's land size, floor plans and size, building age and condition). Interested parties should make their own enquiries and obtain their own legal and financial advice. Should this property be scheduled for auction, the Vendor's Statement may be inspected at either of our two LJ Hooker Property Specialists Real Estate offices for 3 consecutive business days immediately preceding the auction and at the auction for 30 minutes before it starts.

RLA 208516

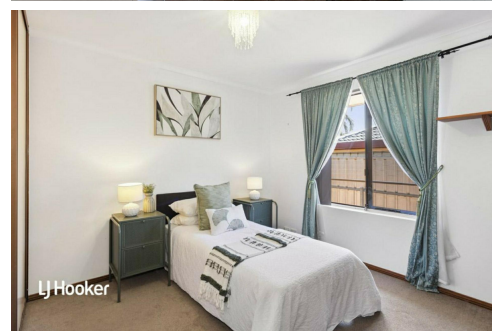
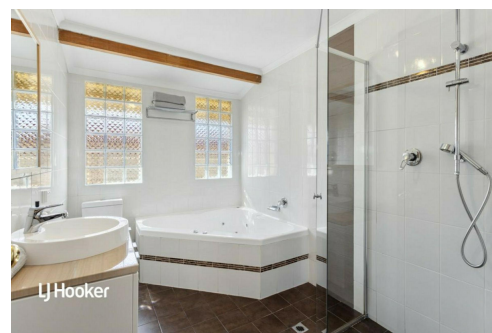
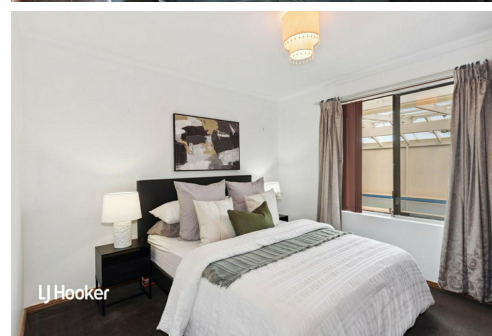
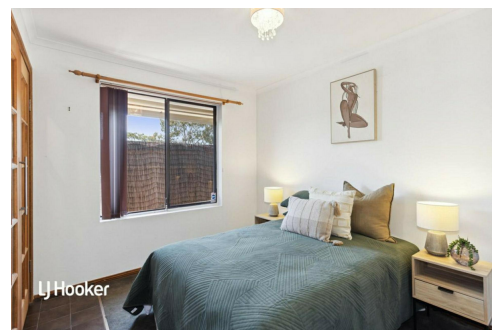
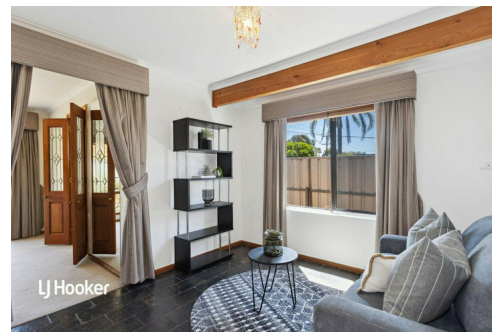
## More About this Property

<b>Property ID</b>	29YAGJU
<b>Property Type</b>	House
<b>House Size</b>	192 m <sup>2</sup>
<b>Land Area</b>	690 m <sup>2</sup>
<b>Including</b>	Air Conditioning Ducted Cooling Evaporative Cooling Pool Spa Deck Dishwasher Outdoor Entertaining Built-in-Robes Fully Fenced Solar Panels Water Tank

**Robert Bonelli 0497 808 908**  
Sales Specialist | robertb@ljhsales.com.au

**LJ Hooker Greenwith | Golden Grove | Mawson Lakes | Modbury (08) 8289 6660**

North East, Shop 2, 1007 North East Road, RIDGEHAVEN SA 5097  
greenwithgoldengrove.ljhooker.com.au | info@ljhsupport.com.au



**Disclaimer:** All information contained therein is gathered from relevant third parties sources. We cannot guarantee or give any warranty about the information provided. Interested parties must rely solely on their own enquiries.

**LJ Hooker Greenwith | Golden Grove  
| Mawson Lakes | Modbury  
(08) 8289 6660**





354m<sup>2</sup>

TOTAL

202m<sup>2</sup>

Living

9m<sup>2</sup>

Shed

29m<sup>2</sup>

Carport

25m<sup>2</sup>

Porch/  
Pergola

89m<sup>2</sup>

Verandah/  
Deck

Scale in metres. This drawing is for illustration purposes only. All measurements are approximate and details intended to be relied upon should be independently verified.

Produced by The Fotobase Group