

## Redwood Park, 276 Hancock Road

Traditional Home with Abundance of Potential!

Auction Location: 276 Hancock Road, Redwood Park SA 5097

Introducing this well-loved and well-maintained home to the market for the first time. Built in 1971, this traditional family home is ready for its next chapter and offers everything you need to start your journey or make a smart investment.

A spacious allotment with plenty of room both inside and outside, including an outdoor entertaining area, rear access, and a shed. This property proves great for the first home buyers, handy people with big ideas or even the astute investors looking at the future potential of this Torrens-titled, easement free allotment.

Features You Will Love:

- \* Three generously sized bedrooms located on the northern side of the home
- \* Original 70's style bathroom with separate toilet



**Disclaimer:** All information contained therein is gathered from relevant third parties sources. We cannot guarantee or give any warranty about the information provided. Interested parties must rely solely on their own enquiries.

3 1 1

**For Sale**

Auction \$625,000

**View**

[ljhooker.com.au/2BJHGJU](http://ljhooker.com.au/2BJHGJU)

**Contact**

**Robert Bonelli**

0497 808 908

[robertb@ljhsales.com.au](mailto:robertb@ljhsales.com.au)

**LJ Hooker Greenwith | Golden Grove  
| Mawson Lakes | Modbury  
(08) 8289 6660**

- \* Carpeted light filled lounge room
- \* Open kitchen with gas cooktop and dining room attached
- \* Split system air-conditioning in main living area
- \* Gas wall heater in living room
- \* Large undercover entertaining area
- \* An oversized single carport with an abundance of additional off-street parking
- \* Rear access to backyard and tilt door shed
- \* Additional workshop/rumpus at the rear corner of the home
- \* 700sqm (approx.) easement free allotment
- \* Approximately 19.08 metre frontage

The location offers everything you need, with childcare and schools nearby, including zoning for Banksia Park International High School. Shopping is convenient, with local stores like Fairview Green just a short walk away and Westfield Tea Tree Plaza is only a few minutes away. Plus, commuting is easy with public transport right at your doorstep, providing direct access to the Adelaide CBD!

Get in touch for more information today!

All information provided has been obtained from sources we believe to be accurate, however, we cannot guarantee the information is accurate and we accept no liability for any errors or omissions (including but not limited to a property's land size, floor plans and size, building age and condition). Interested parties should make their own enquiries and obtain their own legal and financial advice. Should this property be scheduled for auction, the Vendor's Statement may be inspected at either of our two LJ Hooker Property Specialists Real Estate offices for 3 consecutive business days immediately preceding the auction and at the auction for 30 minutes before it starts.

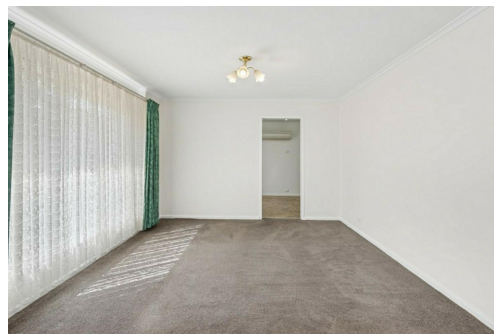
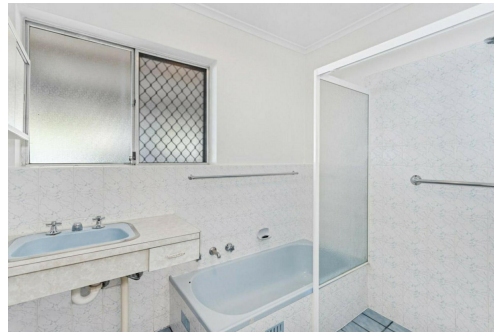
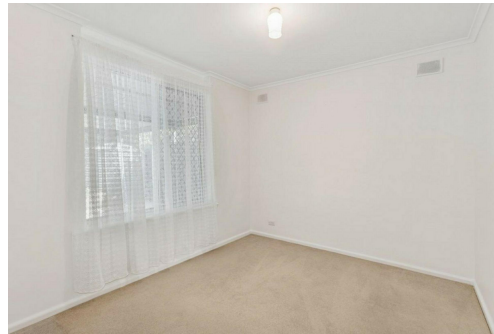
RLA 208516

## More About this Property

Property ID	2BJHGJU
Property Type	House
House Size	100 m2
Land Area	700 m2

**Robert Bonelli 0497 808 908**  
Sales Specialist | robertb@ljhsales.com.au

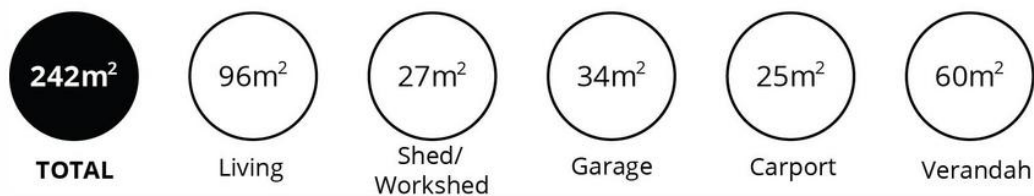
**LJ Hooker Greenwith | Golden Grove | Mawson Lakes | Modbury (08) 8289 6660**  
North East, Shop 2, 1007 North East Road, RIDGEHAVEN SA 5097  
greenwithgoldengrove.ljhooker.com.au | info@ljhsupport.com.au



**Disclaimer:** All information contained therein is gathered from relevant third parties sources. We cannot guarantee or give any warranty about the information provided. Interested parties must rely solely on their own enquiries.

**LJ Hooker Greenwith | Golden Grove  
| Mawson Lakes | Modbury  
(08) 8289 6660**





Scale in metres. This drawing is for illustration purposes only. All measurements are approximate and details intended to be relied upon should be independently verified.

Produced by **The Fotobase Group**