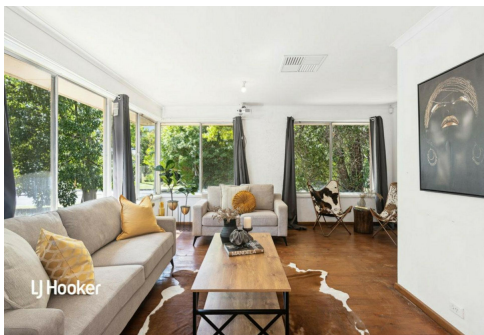


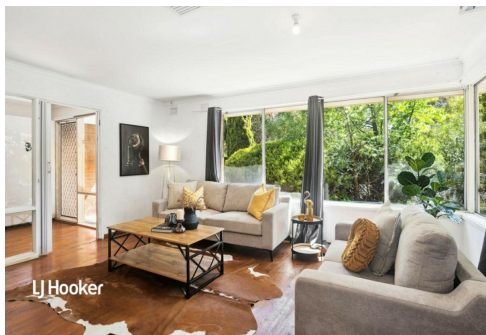


LJ Hooker

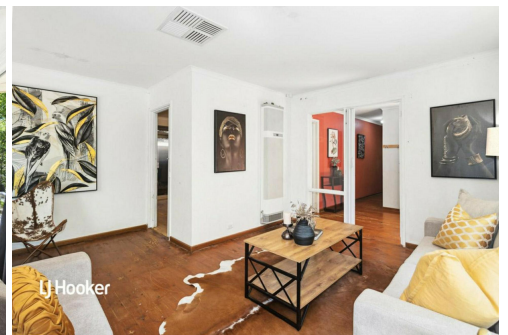
**SOLD**



LJ Hooker



LJ Hooker



LJ Hooker

## Redwood Park, 26 Cronulla Drive

Charming Fixer-Upper!



Unlock the potential of this solid built home, perfect for those looking to invest in a property with great bones and endless possibilities. With a little TLC, this house can be transformed into your dream home! For the astute developers, utilise the corner allotment to sub divide and create multiple dwellings (subject to SA Planning Consents).

Key Features to Love:

- \* Spacious layout to enjoy a generous floor plan with ample living space for family gatherings and entertaining
- \* Functional kitchen with ample bench space
- \* Large windows throughout the home, allowing for bright and airy living spaces
- \* Tree lined front yard for fantastic privacy screening and natural outlook
- \* Retained backyard that has been levelled for convenience and would be perfect for a garden oasis
- \* A vast outdoor area straight across the road at Cronulla Reserve perfect for kids and pets

**For Sale**  
\$639,000 - \$669,000

**View**  
[ljhooker.com.au/2AYWGJU](http://ljhooker.com.au/2AYWGJU)

**Contact**  
**Robert Bonelli**  
0497 808 908  
[robertb@ljhsales.com.au](mailto:robertb@ljhsales.com.au)

**Ashley Palazzo**  
0414 347 884  
[ashleyp@ljhsales.com.au](mailto:ashleyp@ljhsales.com.au)



**Disclaimer:** All information contained therein is gathered from relevant third parties sources. We cannot guarantee or give any warranty about the information provided. Interested parties must rely solely on their own enquiries.

**LJ Hooker Greenwith | Golden Grove  
| Mawson Lakes | Modbury  
(08) 8289 6660**

\* Torrens Titled corner allotment free of any registered easements

Located in the heart of Redwood Park, you'll find a variety of amenities just minutes away, including local shops, parks, and schools. Enjoy easy access to public transport and major roadways, making your commute a breeze.

Don't miss out on this opportunity to create your ideal living space!

Contact us today to schedule a viewing.

All information provided has been obtained from sources we believe to be accurate, however, we cannot guarantee the information is accurate and we accept no liability for any errors or omissions (including but not limited to a property's land size, floor plans and size, building age and condition). Interested parties should make their own enquiries and obtain their own legal and financial advice. Should this property be scheduled for auction, the Vendor's Statement may be inspected at either of our two LJ Hooker Property Specialists Real Estate offices for 3 consecutive business days immediately preceding the auction and at the auction for 30 minutes before it starts.

RLA 208516

## More About this Property

<b>Property ID</b>	2AYWGJU
<b>Property Type</b>	House
<b>House Size</b>	123 m <sup>2</sup>
<b>Land Area</b>	700 m <sup>2</sup>
<b>Including</b>	Air Conditioning Ducted Cooling Alarm Secure Parking

**Robert Bonelli 0497 808 908**

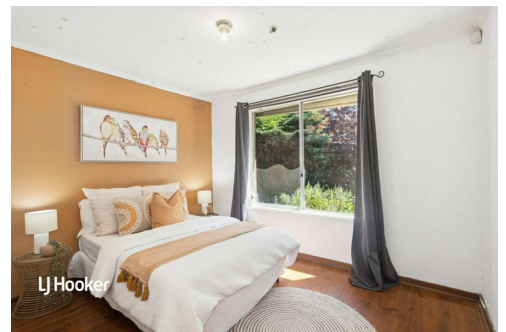
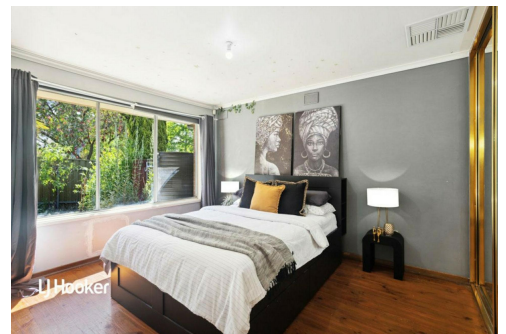
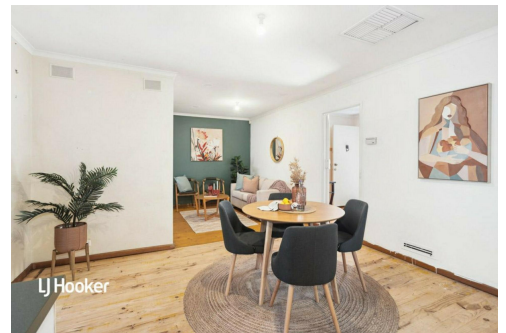
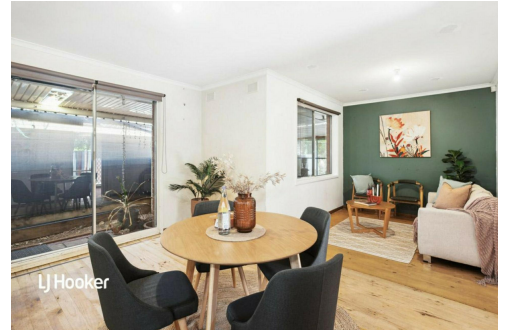
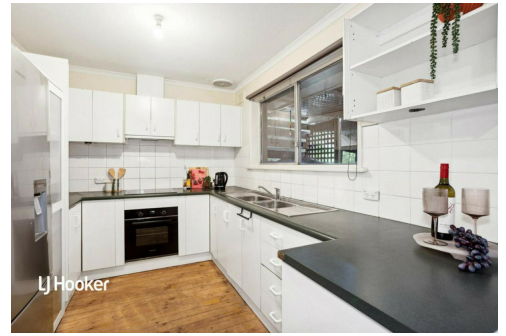
Sales Specialist | robertb@ljhsales.com.au

**Ashley Palazzo 0414 347 884**

Sales Specialist | ashleyp@ljhsales.com.au

**LJ Hooker Greenwith | Golden Grove | Mawson Lakes | Modbury (08) 8289 6660**

North East, Shop 2, 1007 North East Road, RIDGEHAVEN SA 5097  
greenwithgoldengrove.ljhooker.com.au | info@ljhsupport.com.au



**Disclaimer:** All information contained therein is gathered from relevant third parties sources. We cannot guarantee or give any warranty about the information provided. Interested parties must rely solely on their own enquiries.

**LJ Hooker Greenwith | Golden Grove  
| Mawson Lakes | Modbury  
(08) 8289 6660**



**SITE PLAN**  
(NOT TO SCALE)

Scale in metres. This drawing is for illustration purposes only. All measurements are approximate and details intended to be relied upon should be independently verified.

Produced by The Fotobase Group