
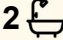
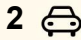


14/419-421 Kamerunga Road, Redlynch

3  2  2 

SOLD UNDER THE HAMMER AT AUCTION

FOR SALE

Please Call

AGENTS

Kim Ryan

0410 500 342

kim.ryan@ljheh.com.au

AGENCY

LJ Hooker Cairns Edge Hill

(07) 4053 9999

Ultra contemporary residence positioned in the heart of Redlynch.

Single level offering clean lines, neutral tones and absolute low maintenance living.

Combined open plan tiled living/dining area which extends to the rear covered patio.

Central kitchen complete with dishwasher, microwave quality appliances and ample storage options.

Three generous-sized bedrooms each with built-in wardrobes and air-conditioning.

Master bedroom is positioned at the rear of the home with two built in wardrobes & ensuite bathroom.

Main bathroom has walk-in shower and a separate toilet.

Fully fenced courtyard with side pedestrian gate on approx 283m².

All information contained therein is gathered from relevant third parties sources. We cannot guarantee or give any warranty about the information provided. Interested parties must rely solely on their own enquiries.

 **LJ Hooker**

Double lock up remote garage with internal access.

Additional features include: 6.6kw of panels feeds into 5kw inverter, internal laundry, fully security screened and split air-conditioning throughout.

Located within walking distance of the Red Beret Hotel, local shops, parklands and local transport.

Within close proximity to Redlynch Central Shopping Centre, local kindergarten, primary and secondary schools, cycle path that takes you as far as Goomboora Park & Cairns Esplanade.

Inspection will not disappoint!

Body Corporate Fees: Approx \$666 per year

Auction On Site & Online Via Realtair.
Tuesday 16/12/25 at 5:30pm

Unless Sold Prior To Auction

This property is being sold by auction or without a price and therefore a price guide cannot be provided. The website may have filtered the property into a price bracket for website functionality purposes.

MORE DETAILS

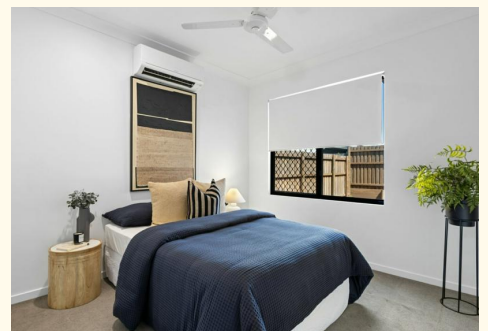
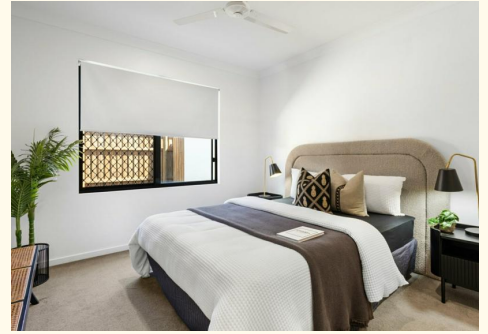
Property ID	3Y0JFMB
Property Type	House
Land Area	283 m2
Including	Ensuite Air Conditioning Dishwasher Floorboards Built-in-Robes Solar Hot Water

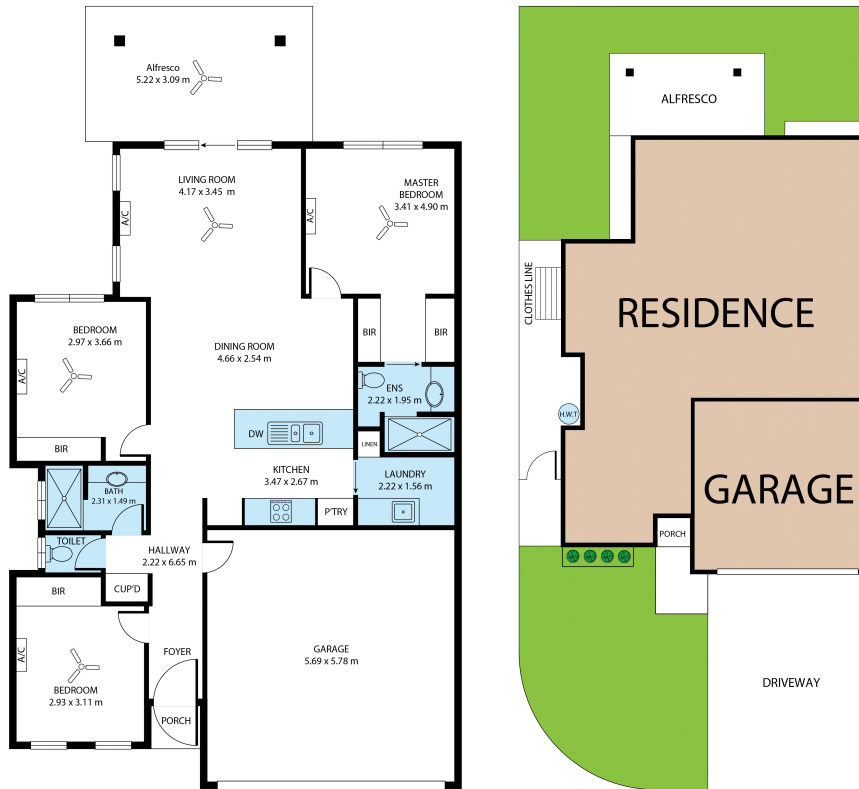
Kim Ryan 0410 500 342

Sales Consultant | kim.ryan@ljheh.com.au

LJ Hooker Cairns Edge Hill (07) 4053 9999

81 - 83 Woodward Street, EDGE HILL QLD 4870
cairnsedgehill.ljhooker.com.au | cairnsedgehill@ljheh.com.au





14/419-421 Kamerunga Road, Redlynch

TOTAL APPROX. FLOOR AREA 131 SQ.M

This floor plan including furniture, fixture measurements and dimensions are approximate and for illustrative purposes only. ©RealFocusCairns.com.au

All information contained therein is gathered from relevant third parties sources.
 We cannot guarantee or give any warranty about the information provided.
 Interested parties must rely solely on their own enquiries.