



## Redlynch, 8 Tallow Wood Close

Sold Under The Hammer!

The Redlynch Entry You've Been Waiting For!

Nestled at the end of a quiet cul-de-sac, this is an opportunity not to be missed!

With light-filled interiors flowing effortlessly from the open-plan living area to the expansive rear covered patio, this home is ideal for first home buyers, investors, or anyone seeking a relaxed Redlynch lifestyle.

Central kitchen with ample storage

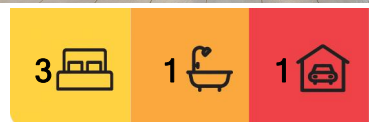
Master bedroom with walk-in wardrobe

Two additional bedrooms with built-in wardrobes and ceiling fans

Main bathroom with a bathtub

Fenced sides and rear on a 833sqm block with established gardens and plenty of green lawn area

Lockable shed with rear yard access



**For Sale**  
Please Call

**View**  
[ljhooker.com.au/3XBRFMB](http://ljhooker.com.au/3XBRFMB)

**Contact**  
**Kim Ryan**  
0410 500 342  
[kim.ryan@ljheh.com.au](mailto:kim.ryan@ljheh.com.au)

**Kyen Gandini**  
0461 334 501  
[kyen@ljheh.com.au](mailto:kyen@ljheh.com.au)



**LJ Hooker Cairns Edge Hill**  
**(07) 4053 9999**

**Disclaimer:** All information contained therein is gathered from relevant third parties sources. We cannot guarantee or give any warranty about the information provided. Interested parties must rely solely on their own enquiries.

/u8226? Internal laundry, air conditioning, and security screens throughout

/u8226? Secure single remote garage

The generous backyard and convenient side vehicle access offer space to spread out and enjoy. Whether you're pottering in the garden or watching the kids and pets play, there's room to grow here /u8212? all in a sought-after Redlynch location.

Positioned within the catchment zones for both Redlynch State College and St Andrew/u8217?s Catholic College, and just minutes to Redlynch Central Shopping Centre, parklands, kindergarten and local public transport /u8212? this home offers unbeatable value in one of Cairns' most in-demand suburbs.

Call to arrange your inspection!

Auction On Site & Online Via RealTAir

Saturday 28 June at 9:30am

This property is being sold by auction or without a price and therefore a price guide cannot be provided. The website may have filtered the property into a price bracket for website functionality purposes.

## More About this Property

<b>Property ID</b>	3XBRFMB
<b>Property Type</b>	House
<b>House Size</b>	112 m2
<b>Land Area</b>	833 m2
<b>Including</b>	Air Conditioning Toilets (1) Outdoor Entertaining Built-in-Robes Secure Parking Remote Garage

**Kim Ryan 0410 500 342**

Sales Consultant | [kim.ryan@ljheh.com.au](mailto:kim.ryan@ljheh.com.au)

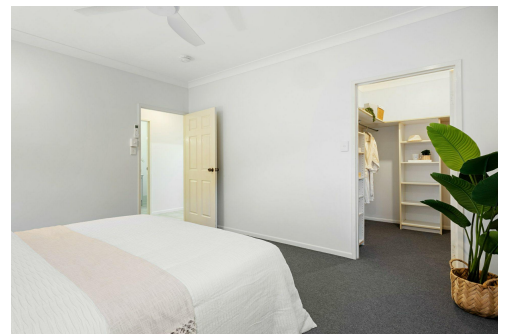
**Kyen Gandini 0461 334 501**

Sales Associate | [kyen@ljheh.com.au](mailto:kyen@ljheh.com.au)

**LJ Hooker Cairns Edge Hill (07) 4053 9999**

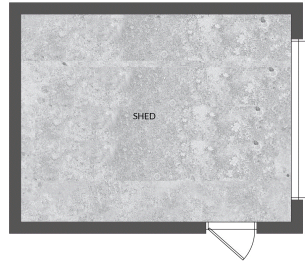
81 - 83 Woodward Street, EDGE HILL QLD 4870

[cairnsedgehill.ljhooker.com.au](http://cairnsedgehill.ljhooker.com.au) | [cairnsedgehill@ljheh.com.au](mailto:cairnsedgehill@ljheh.com.au)



**LJ Hooker Cairns Edge Hill  
(07) 4053 9999**

**Disclaimer:** All information contained therein is gathered from relevant third parties sources. We cannot guarantee or give any warranty about the information provided. Interested parties must rely solely on their own enquiries.



(NOT IN POSITION)



FLOOR PLAN

This floor plan including furniture, fixture measurements and dimensions are approximate and for illustrative purposes only. ©RealFocusCairns.com.au

## 8 Tallow Wood Close, Redlynch