



7 Glenthorne Street, Redland Bay


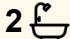
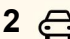
## Near New Family Home - Luxury Living - Space and Sophistication

This one-year-old immaculate lowset has been designed for low maintenance living and crafted for both everyday living and entertaining. This is a residence where space, flow and lifestyle come together with intent, offering stunning Plantation shutters throughout and Hamptons vibe Hybrid timber floors.

From its coastal curb appeal to the extra wide striking pale pink front door, boasting ducted air-conditioning for all year round comfort and a 10.2kw Fronius Solar inverter to keep your bills to a minimum, you will be impressed by what this home has to offer.

Shoreline Estate in Redland Bay is a sought-after location, offering a community mindful design, sea breezes, surrounded by nature, and has an amazing children's park with lighthouse and Scenic Shores State School across the road. Shoreline offers effortless lifestyle by the bay. Within minutes to Victoria Point and Cornubia, Shopping Centres and Schools.

There is a modern private and tiled entertainment area with power

3  2  2 

**FOR SALE**  
Contact Agent

**VIEW**  
Sat 13th Jun @ 9:00AM - 9:30AM

**AGENTS**  
Melinda Lee-Ball  
0415 520 748  
melinda.leeball@ljhooker.com.au

Luisa Sargent  
0439 599 080  
luisa.sargent@ljhooker.com.au

**AGENCY**  
LJ Hooker Shailer Park  
(07) 3102 0829

All information contained therein is gathered from relevant third parties sources.  
We cannot guarantee or give any warranty about the information provided.  
Interested parties must rely solely on their own enquiries.

 **LJ Hooker**

and a ceiling fan. Hosting your loved ones is made easy in this space. It overlooks the low maintenance yard, with full Colorbond fencing and ample space for the children and pets to play securely. There is a paved concrete slab in place ready for a garden shed. Ample space down the side of the house for plants or to install veggies gardens.

From the moment you step inside, this home reveals a layout designed for real families, separation where you need it and connection where it matters most.

To the front of the home is a separate living space, so each family member has their own space to retreat to. A nice wide hallway to a modern laundry with ample bench space, sliding door to the clothesline and a large walk-in linen cupboard with shelving, ideal for extra storage.

The stunning kitchen will impress the chef in the family, featuring an induction stove top, rangehood, a large plumbed fridge space, Haier dishwasher, contemporary gold tapware and fittings, under mounted sink, breakfast bar, phone USB charging port, a large walk-in pantry with shelving and power for a microwave, plenty of bench and cupboard space and a gorgeous large picture window to allow the natural light through.

The spacious open plan living and dining area have an inviting coastal vibe, with its perfect blend of indoor-outdoor living. There is a recessed nook adjacent to the kitchen that could be used as a study, or easily build in more cabinets for additional storage, add feature shelves, a bar or bookcase, you decide.

A modern main bathroom with separate shower, a stunning freestanding soaker bathtub and a separate toilet.

Three generous bedrooms with light fans, two with mirrored cupboards and the grand master bedroom includes a generous walk-in robe and a contemporary spacious ensuite.

Double remote garage with a door leading to the back yard. Armour X security screens, Franklyn Blinds throughout, and modern downlights.

Don't let this beautiful home pass you by. Contact Melinda Lee-Ball or Luisa Sargent for additional information. We look forward to welcoming you to our open home!

## MORE DETAILS

Property ID 6G4HVG  
Property Type House  
Land Area 312 m2  
Including Air Conditioning  
Ducted Cooling  
Ducted Heating  
Dishwasher  
Outdoor Entertaining  
Floorboards  
Built-in-Robes  
Secure Parking  
Fully Fenced  
Remote Garage  
Solar Panels

### Melinda Lee-Ball 0415 520 748

Licensed Real Estate Agent | [melinda.leeball@ljhooker.com.au](mailto:melinda.leeball@ljhooker.com.au)

### Luisa Sargent 0439 599 080

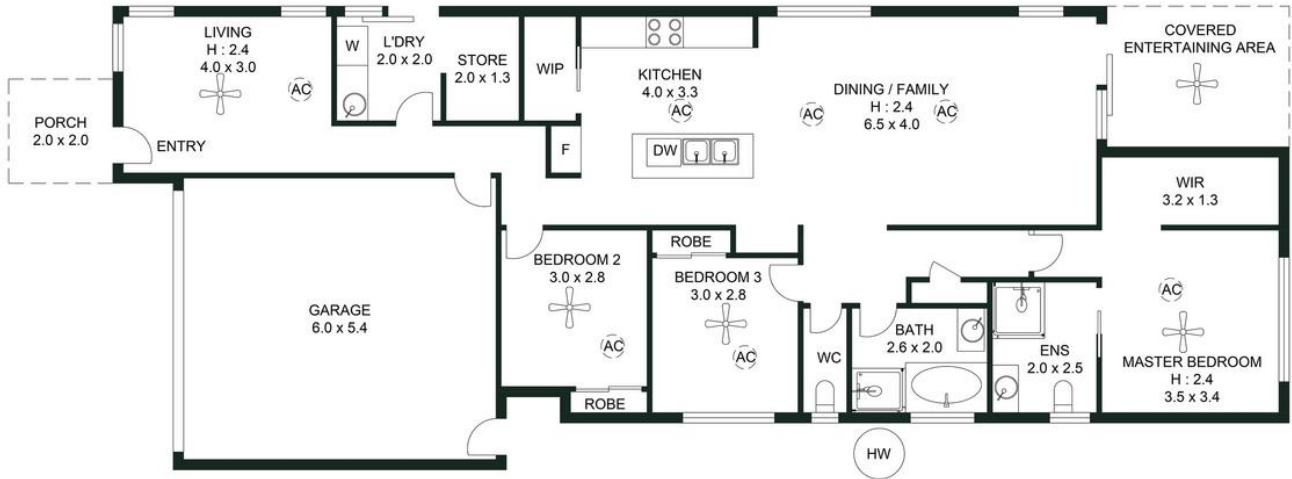
Licensed Real Estate Agent | [luisa.sargent@ljhooker.com.au](mailto:luisa.sargent@ljhooker.com.au)

### LJ Hooker Shailer Park (07) 3102 0829

2/3 Mandew Street, SHAILER PARK QLD 4128

[shailerpark.ljhooker.com.au](http://shailerpark.ljhooker.com.au) | [shailerpark@ljhooker.com.au](mailto:shailerpark@ljhooker.com.au)





### 7 GLENTHORNE STREET, REDLAND BAY

Plans should not be relied on. Interested parties should make and rely on their own enquiries.  
The floor plan is not to scale; measurements are indicative and in metres. Exterior elements are not in position.



APPROXIMATE AREAS	
Internal Area	125 sqm
External Area	36 sqm
Total Area	161 sqm

