
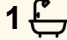





27 Susan Street, Redbank Plains

3  1  4 

Exciting Dual-Purpose Opportunity —Big Block, Big Potential!

FOR SALE
SOLD BY MARK FOELZ

AGENCY
LJ Hooker Property Partners - Forest Lake
(07) 3372 0400

Whether you're dreaming of a home with plenty of space or you're an investor seeking your next value-add project, this rare 1,113m² property zoned Residential Low Density in the Ipswich City Council area offers endless potential.

Positioned on a generous block, the existing home is thoughtfully placed to one side, providing clear side access to the rear of the property. Enjoy the land as one expansive parcel —perfect for families, tradies, or hobbyists —complete with a large shed accommodating up to four cars.

But the real opportunity lies in the flexibility of the site:

- Subdivide and capitalise on the rear land (subject to council approval)
 - Build a granny flat to generate dual income
 - Develop the back block while maintaining rental income from the front house
 - Live in or rent out the existing home and plan for future growth
- With land this size becoming increasingly rare, and multiple exit

All information contained therein is gathered from relevant third parties sources.
We cannot guarantee or give any warranty about the information provided.
Interested parties must rely solely on their own enquiries.

 **LJ Hooker**

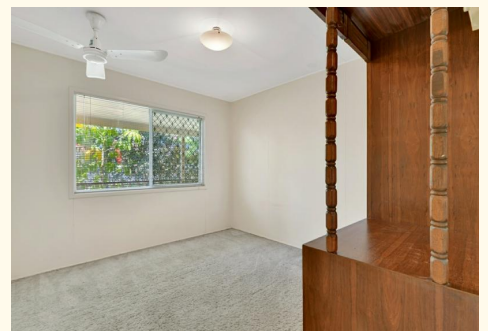
strategies available, this is a unique chance to secure your financial future while enjoying the lifestyle benefits of a large block.

Opportunities like this don't come around often

MORE DETAILS

Property ID	6GJ23
Property Type	House
Land Area	1113 m2

LJ Hooker Property Partners - Forest Lake (07) 3372 0400
Shop H, 255 Forest Lake Boulevard, FOREST LAKE QLD 4078
11834 |



All information contained therein is gathered from relevant third parties sources.
We cannot guarantee or give any warranty about the information provided.
Interested parties must rely solely on their own enquiries.



27 Susan St, Redbank Plains QLD 4301

Dimensions are approximate & therefore should only be used for illustrative purposes.

Total area: approx. 168.2. metres

All information contained therein is gathered from relevant third parties sources.
 We cannot guarantee or give any warranty about the information provided.
 Interested parties must rely solely on their own enquiries.