

6 Irrawang Street, Raymond Terrace

## ONE OF A FEW LEFT

Once upon a time properties on over 1400sqm were the norm, fast forward to 2026 and they are becoming a rare and highly sought after commodity.

If you've been looking for that potential development site, a large block for the kids to truly play or maybe something to hand down to the family down the track then look no further.

Internally there is a freshly painted, two bedroom cottage with lovingly restored original floorboards, fireplaces and much more.

Our vendor has decided to live in another direction however, they need this rare offering sold before they pivot. We don't know when something like this will come to market so don't miss this beauty.

All information contained herein is gathered from sources we consider to be reliable. However, we cannot guarantee or give any warranty about the information provided. Interested parties must solely rely on their own enquiries. Any personal information given to us during the course of the campaign will be kept on our database for follow up and to market other services and opportunities unless instructed in writing. View our privacy policy here -

<https://www.ljhooker.com.au/legals/privacy-policy>

2 🏠 1 🚿 1 🚗

### FOR SALE

Price Guide: \$950,000-\$1,020,000.

### AGENTS

Ryan O'Connor

0417 977 476

roconnor.medowie@ljhooker.com.au

### AGENCY

LJ Hooker Nelson Bay

(02) 4984 2400

All information contained therein is gathered from relevant third parties sources. We cannot guarantee or give any warranty about the information provided. Interested parties must rely solely on their own enquiries.

 **LJ Hooker**

## MORE DETAILS

Property ID 13VGF6R  
Property Type House  
House Size 92 m2  
Land Area 1412 m2  
Including Air Conditioning  
Fire Place  
Deck  
Floorboards  
Secure Parking  
Fully Fenced

### Ryan O'Connor 0417 977 476

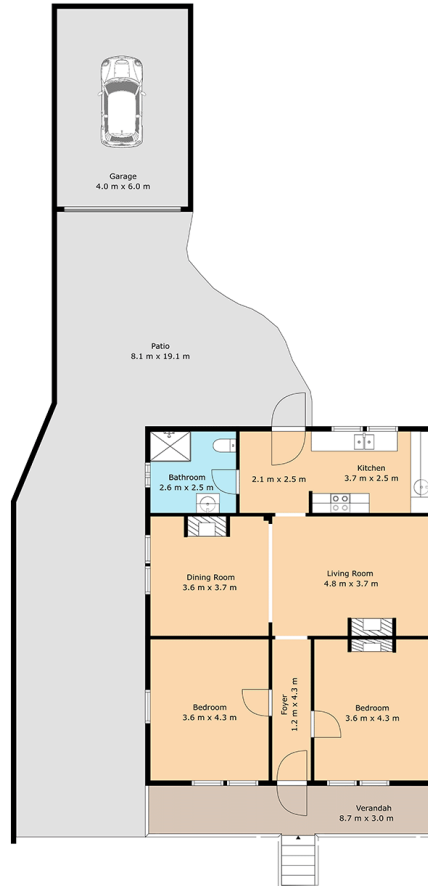
Sales Executive | Licensed Real Estate Agent - Class 2 |  
roconnor.medowie@ljhooker.com.au

### LJ Hooker Nelson Bay (02) 4984 2400

31 Stockton Street, NELSON BAY NSW 2315  
nelsonbay.ljhooker.com.au | nelsonbay@ljhooker.com.au



# 6 Irrawang Steet Raymond Terrace



**TOTAL: 92 m<sup>2</sup>**  
1st floor: 92 m<sup>2</sup>  
EXCLUDED AREAS: PORCH: 14 m<sup>2</sup>, PATIO: 88 m<sup>2</sup>, GARAGE: 24 m<sup>2</sup>,  
WALLS: 13 m<sup>2</sup>

ALL SIZES, DIMENSIONS & ELEMENTS ARE APPROXIMATE & INTENDED FOR VIEWING PURPOSES ONLY  
© 2026 Rite Angle Media - All rights reserved  
www.riteanglemedia.com.au

Floor Plan Created By Cubicasa App. Measurements Deemed Highly Reliable But Not Guaranteed.



All information contained therein is gathered from relevant third parties sources.  
We cannot guarantee or give any warranty about the information provided.  
Interested parties must rely solely on their own enquiries.

