

6 Irrawang Street, Raymond Terrace

ONE OF A FEW LEFT

Once upon a time properties on over 1400sqm were the norm, fast forward to 2026 and they are becoming a rare and highly sought after commodity.

If you've been looking for that potential development site, a large block for the kids to truly play or maybe something to hand down to the family down the track then look no further.




Internally there is a freshly painted, two bedroom cottage with lovingly restored original floorboards, fireplaces and much more.

Our vendor has decided to live in another direction however, they need this rare offering sold before they pivot. We don't know when something like this will come to market so don't miss this beauty.

All information contained herein is gathered from sources we consider to be reliable. However, we cannot guarantee or give any warranty about the information provided. Interested parties must solely rely on their own enquiries. Any personal information given to us during the course of the campaign will be kept on our database for follow up and to market other services and opportunities unless instructed in writing. View our privacy policy here -

<https://www.ljhooker.com.au/legals/privacy-policy>

All information contained therein is gathered from relevant third parties sources. We cannot guarantee or give any warranty about the information provided. Interested parties must rely solely on their own enquiries.

2  1  1 

FOR SALE

Contact Agent

VIEW

By Appointment

AGENTS

Ryan O'Connor

0417 977 476

roconnor.medowie@ljhooker.com.au

AGENCY

LJ Hooker Nelson Bay

(02) 4984 2400



MORE DETAILS

Property ID 13VGF6R
Property Type House
House Size 92 m2
Land Area 1412 m2
Including Air Conditioning
Fire Place
Deck
Floorboards
Secure Parking
Fully Fenced

Ryan O'Connor 0417 977 476

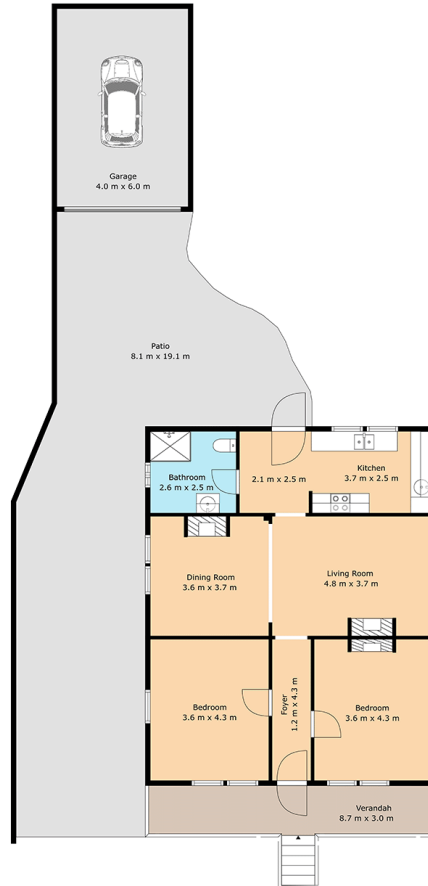
Sales Executive | Licensed Real Estate Agent - Class 2 |
roconnor.medowie@ljhooker.com.au

LJ Hooker Nelson Bay (02) 4984 2400

31 Stockton Street, NELSON BAY NSW 2315
nelsonbay.ljhooker.com.au | nelsonbay@ljhooker.com.au



6 Irrawang Steet Raymond Terrace



TOTAL: 92 m²
1st floor: 92 m²
EXCLUDED AREAS: PORCH: 14 m², PATIO: 88 m², GARAGE: 24 m²,
WALLS: 13 m²

ALL SIZES, DIMENSIONS & ELEMENTS ARE APPROXIMATE & INTENDED FOR VIEWING PURPOSES ONLY
© 2026 Rite Angle Media - All rights reserved
www.riteanglemedia.com.au

Floor Plan Created By Cubicasa App. Measurements Deemed Highly Reliable But Not Guaranteed.



All information contained therein is gathered from relevant third parties sources.
We cannot guarantee or give any warranty about the information provided.
Interested parties must rely solely on their own enquiries.

