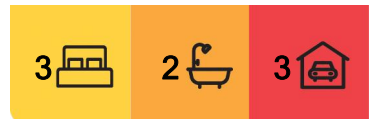




Raymond Island, 44-46 Fourth Avenue

PERFECT HOLIDAY GETAWAY ON RAYMOND ISLAND WITH JETTY BERTH

This very comfortable home sits proudly on a large 1367m2 waterfront reserve allotment and boasts lovely views of Lake Victoria across to Paynesville. Take in the water views and all-day sunshine from the living, dining and kitchen or enjoy outdoor entertaining on the spacious view deck. Large recently tiled entry with extra wide door, three bedrooms with BIR's, two bathrooms, main bathroom has been partly refurbished with new floor tiles and walk-in shower. Oversized double garage with room for a workshop and separate carport. A deep-water jetty berth is included for easy access to all your boating activities. Walk along the foreshore boardwalk (just meters away) to the island ferry which provides transport across McMillan Strait to Paynesville and all its amenities, no need for the car. Enjoy the abundance of bird and wildlife, koalas being the main attraction or explore the wonders of the Gippsland Lakes.



For Sale
Please Call

View
ljhooker.com.au/KT3FCA

Contact
Lorraine Edlington
0437 532 860
ledlington.paynesville@ljhooker.com.au



LJ Hooker Paynesville
(03) 5156 6166

Disclaimer: All information contained therein is gathered from relevant third parties sources. We cannot guarantee or give any warranty about the information provided. Interested parties must rely solely on their own enquiries.

More About this Property

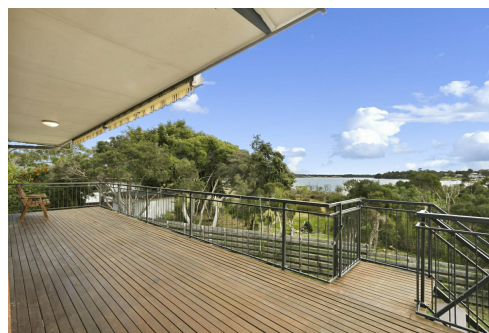
Property ID	KT3FCA
Property Type	House
House Size	216 m ²
Land Area	1367 m ²
Including	Air Conditioning Toilets (2) Deck Dishwasher Outdoor Entertaining Built-in-Robes Remote Garage

Lorraine Edlington 0437 532 860

Officer In Effective Control | Licensed Estate Agent |
ledlington.paynesville@ljhooker.com.au

LJ Hooker Paynesville (03) 5156 6166

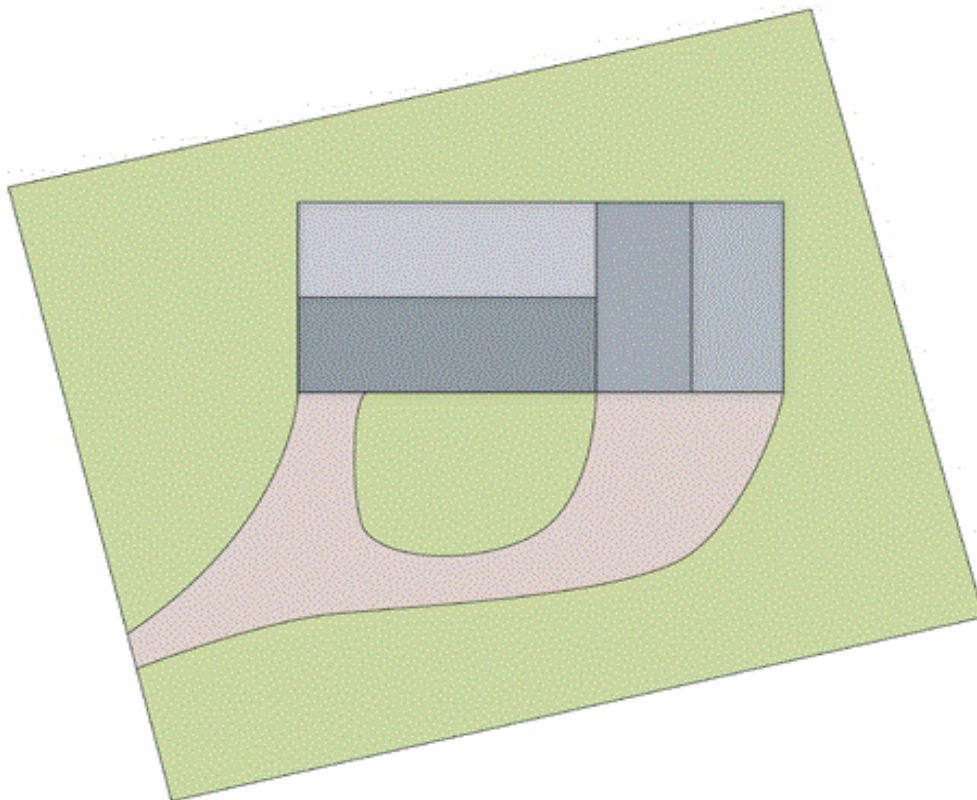
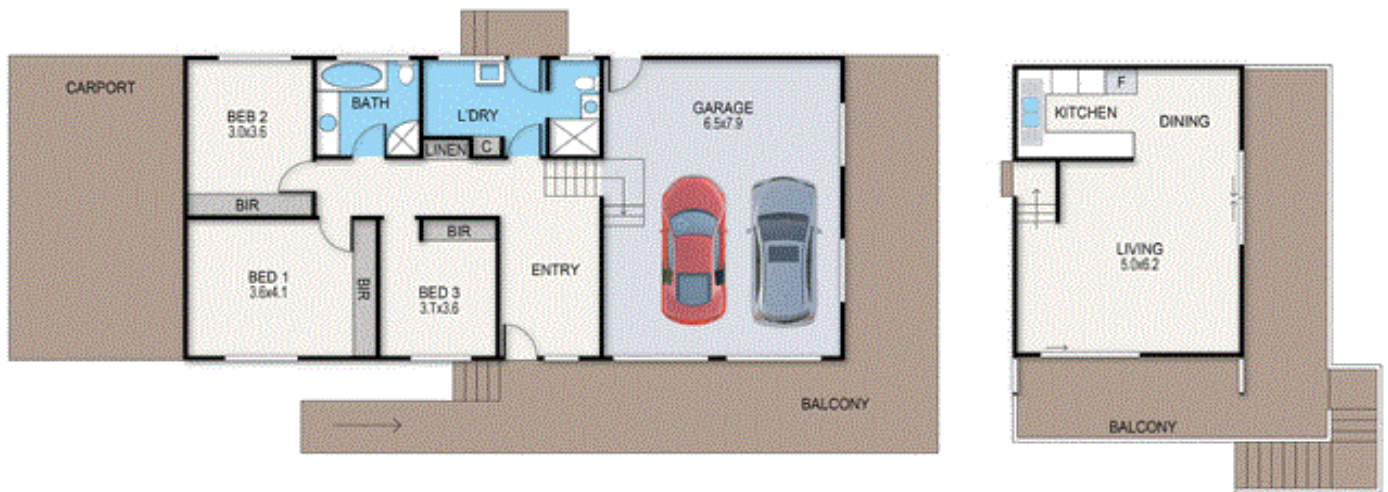
25A Esplanade, PAYNESVILLE VIC 3880
paynesville.ljhooker.com.au | paynesville@ljhooker.com.au



Disclaimer: All information contained therein is gathered from relevant third parties sources.
We cannot guarantee or give any warranty about the information provided. Interested parties must rely solely on their own enquiries.

LJ Hooker Paynesville
(03) 5156 6166

44-46 Fourth Avenue, Raymond Island



archistyle

Whilst every attempt has been made to ensure the accuracy of this floorplan, measurements of doors, windows, rooms and any other items are approximate only. The producer or the agent cannot be held responsible for any errors, omissions or misstatements. This plan is for illustrative purposes only and should be used as such.



LJ Hooker Paynesville
(03) 5156 6166

Disclaimer: All information contained therein is gathered from relevant third parties sources. We cannot guarantee or give any warranty about the information provided. Interested parties must rely solely on their own enquiries.