



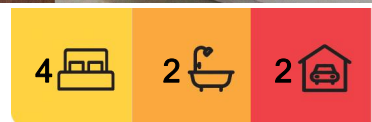
Raymond Island, 38 Eighth Avenue

CHARMING HOME WITH STUDIO AND OPTIONAL JETTY BERTH

Nestled on a 1000sqm allotment on Raymond Island, this property combines charm, comfort and lifestyle with the option to purchase a deep water jetty berth. The main home features a formal lounge with hardwood floors, an updated kitchen with a modern oven and dishwasher, three bedrooms with new carpet and a wet room. A timber deck with ramp offers a great entertaining space, complemented by a detached laundry and double length carport.

At the rear a self contained studio with a shower and toilet is perfect for guests. New colorbond fencing creates a secure space for pets and children. Solar panels, three split systems and a garden shed enhance convenience and sustainability.

Surrounded by natural beauty, including koalas and close to the Gippsland Lakes this home is a short walk to the ferry for quick access to Paynesville. Don't miss this peaceful island retreat.



For Sale
\$399,000

View
ljhooker.com.au/MARFCA

Contact
Lorraine Edlington
0437 532 860
ledlington.paynesville@ljhooker.com.au



Disclaimer: All information contained therein is gathered from relevant third parties sources. We cannot guarantee or give any warranty about the information provided. Interested parties must rely solely on their own enquiries.

LJ Hooker Paynesville | Lakes Entrance | Metung
(03) 5156 6166

More About this Property

| | |
|---------------|---|
| Property ID | MARFCA |
| Property Type | House |
| Land Area | 1010.03 m2 |
| Including | Air Conditioning Toilets (2) Dishwasher Outdoor Entertaining Built-in-Robes Fully Fenced Solar Panels |

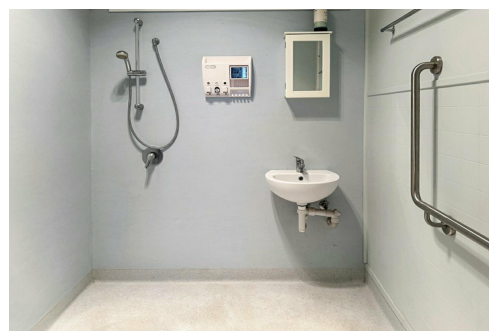
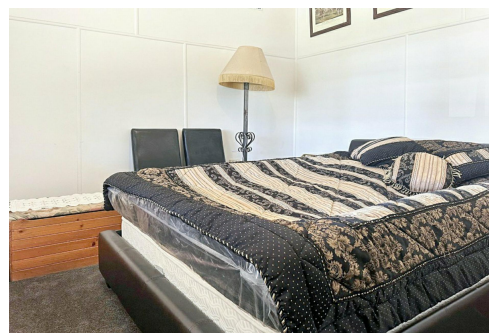
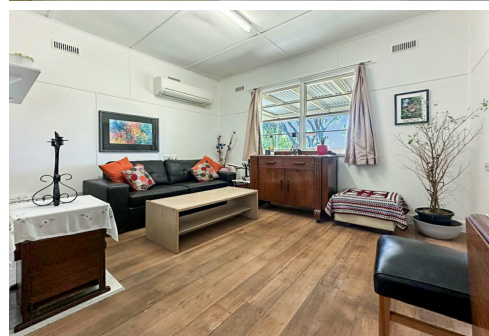
Lorraine Edlington 0437 532 860

Officer In Effective Control | Licensed Estate Agent |
ledlington.paynesville@ljhooker.com.au

LJ Hooker Paynesville | Lakes Entrance | Metung (03) 5156 6166

25A Esplanade, PAYNESVILLE VIC 3880

paynesville.ljhooker.com.au | paynesville@ljhooker.com.au



Disclaimer: All information contained therein is gathered from relevant third parties sources.

We cannot guarantee or give any warranty about the information provided. Interested parties must rely solely on their own enquiries.

**LJ Hooker Paynesville | Lakes
Entrance | Metung
(03) 5156 6166**