

Raymond Island, 32 Fourth Avenue

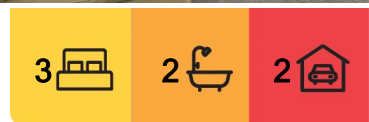
ENJOY ISLAND LIVING HERE

Nestled just a short stroll from the waterfront and the island ferry, this charming home offers the perfect holiday retreat. The ferry provides easy access across McMillan Strait to Paynesville, adding convenience to your island getaway.

The home features a comfortable lounge room, kitchen and meals area, three bedrooms including a master with built-in robes, a bathroom, a separate shower room with toilet and a laundry. Recent updates include new carpets and timber look flooring, while split system heating and cooling ensure year round comfort.

Adding to the appeal is a caravan, ideal for hosting extra guests, along with a garage and single carport for storage and parking needs.

Set in a nature lover's paradise, the island offers a tranquil escape with its abundant wildlife, including koalas, kangaroos, echidnas, native birds and playful dolphins in the lake. Water enthusiasts can enjoy boating, fishing, paddling, or swimming in the pristine waters. Relax, unwind and embrace the serenity of this idyllic location!



For Sale
Please Call

View
ljhooker.com.au/MB3FCA

Contact
Lorraine Edlington
0437 532 860
ledlington.paynesville@ljhooker.com.au



Disclaimer: All information contained therein is gathered from relevant third parties sources. We cannot guarantee or give any warranty about the information provided. Interested parties must rely solely on their own enquiries.

LJ Hooker Paynesville | Lakes Entrance | Metung
(03) 5156 6166

More About this Property

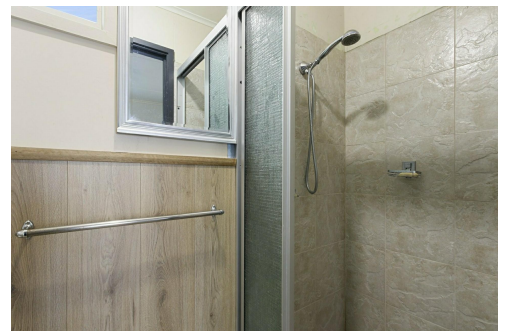
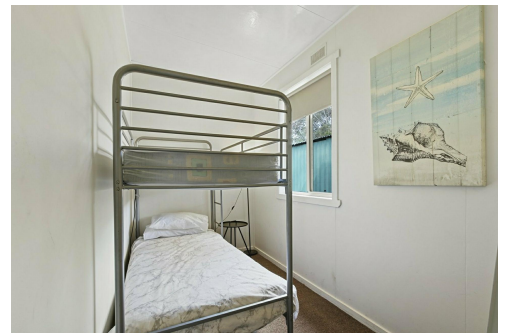
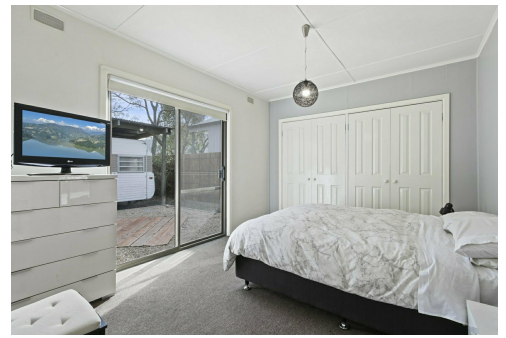
Property ID	MB3FCA
Property Type	House
Land Area	809 m2
Including	Air Conditioning Toilets (1) Outdoor Entertaining Built-in-Robes

Lorraine Edlington 0437 532 860

Officer In Effective Control | Licensed Estate Agent |
ledlington.paynesville@ljhooker.com.au

LJ Hooker Paynesville | Lakes Entrance | Metung (03) 5156 6166

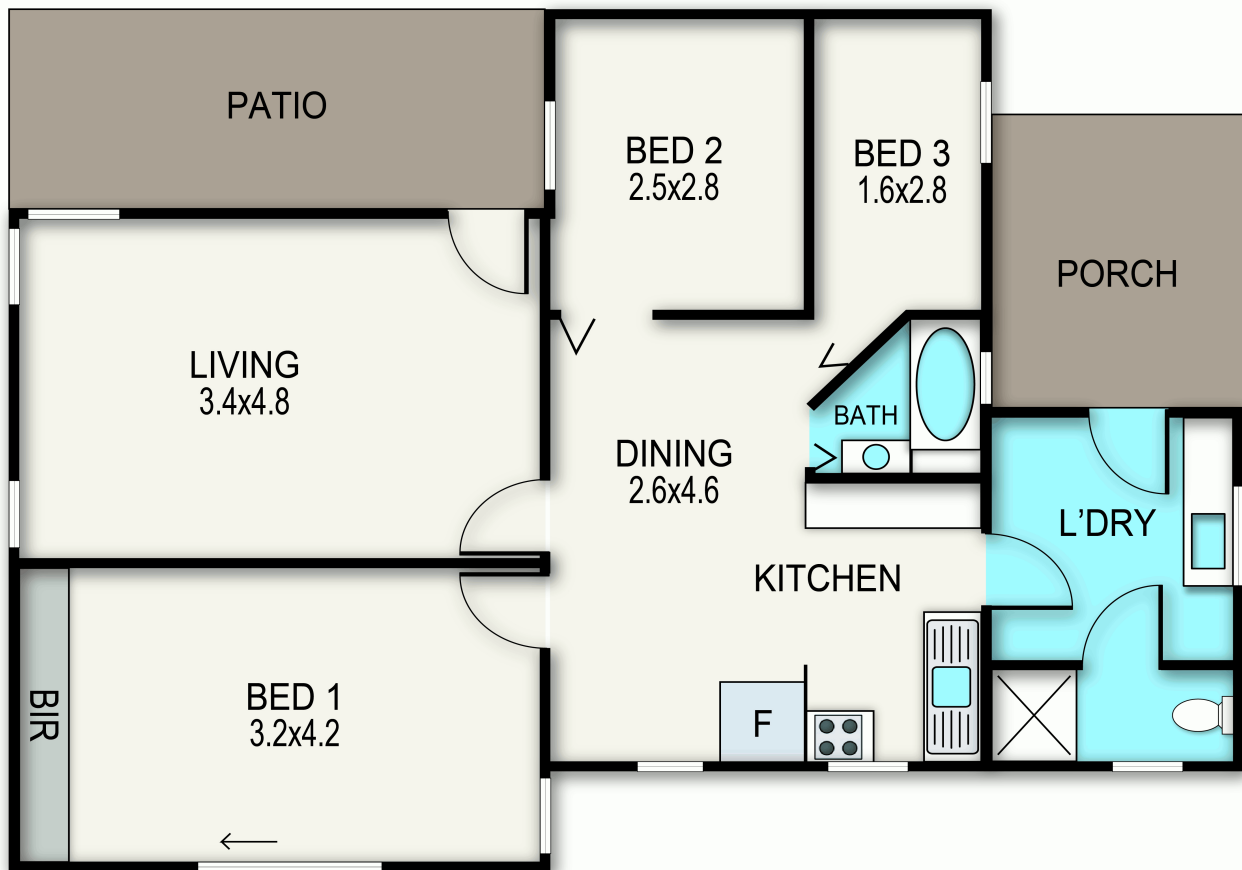
25A Esplanade, PAYNESVILLE VIC 3880
paynesville.ljhooker.com.au | paynesville@ljhooker.com.au



Disclaimer: All information contained therein is gathered from relevant third parties sources.
We cannot guarantee or give any warranty about the information provided. Interested parties must rely solely on their own enquiries.

**LJ Hooker Paynesville | Lakes
Entrance | Metung
(03) 5156 6166**

32 Fourth Avenue, Raymond Island



Whilst every attempt has been made to ensure the accuracy of this floorplan, measurements of doors, windows, rooms and any other items are approximate only. The producer or the agent cannot be held responsible for any errors, omissions or misstatements. This plan is for illustrative purposes only and should be used as such.



**LJ Hooker Paynesville | Lakes
Entrance | Metung
(03) 5156 6166**

Disclaimer: All information contained therein is gathered from relevant third parties sources. We cannot guarantee or give any warranty about the information provided. Interested parties must rely solely on their own enquiries.