



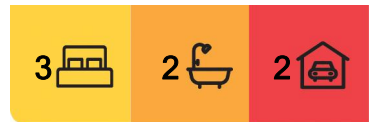
Raymond Island, 29 Sixth Avenue

CHARMING COTTAGE ON RAYMOND ISLAND

Nestled in a peaceful no through street just a short stroll from the ferry and waterfront, this unique Raymond Island property offers the ultimate island lifestyle. The main residence features two bedrooms, a bathroom with a bath and separate laundry. Light and bright open plan living room with vinyl plank flooring. Functional kitchen with electric cooking. Adding to the appeal is a beautifully presented one bedroom studio complete with its own ensuite and kitchenette perfect for guests or extended family. Reverse cycle air conditioning in both the main house and studio, along with ceiling fans throughout, ensure year round comfort.

Step outside to a north facing verandah and a generous undercover entertaining area, ideal for relaxing or hosting barbecues while overlooking the spacious backyard. A large shed provides ample space for storing a caravan or boat.

Currently operating as Sea Lake Cottage, a well established and successful holiday rental, the property is offered fully furnished ready to move in or continue as a turnkey investment. Surrounded by nature, enjoy daily encounters with koalas, native birds and local wildlife, or



For Sale
\$450,000

View
ljhooker.com.au/MFFFCA

Contact
Lorraine Edlington
0437 532 860
ledlington.paynesville@ljhooker.com.au



Disclaimer: All information contained therein is gathered from relevant third parties sources. We cannot guarantee or give any warranty about the information provided. Interested parties must rely solely on their own enquiries.

LJ Hooker Paynesville | Lakes Entrance | Metung
(03) 5156 6166

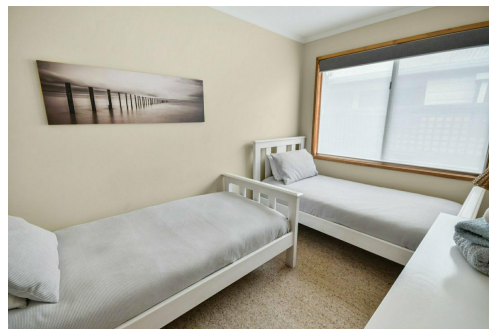
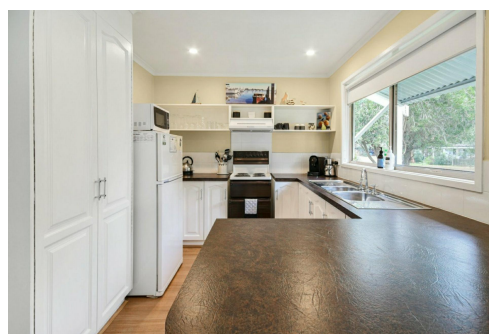
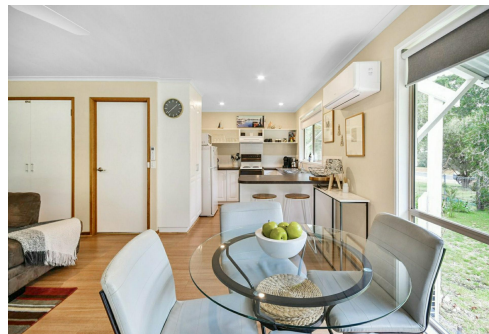
take advantage of the nearby Gippsland Lakes for boating, fishing and water sports. This is island living at its finest!

More About this Property

Property ID	MFFCA
Property Type	House
Land Area	806 m2
Including	Ensuite Air Conditioning Toilets (2) Outdoor Entertaining Built-in-Robes

Lorraine Edlington 0437 532 860
Officer In Effective Control | Licensed Estate Agent |
ledlington.paynesville@ljhooker.com.au

LJ Hooker Paynesville | Lakes Entrance | Metung (03) 5156 6166
25A Esplanade, PAYNESVILLE VIC 3880
paynesville.ljhooker.com.au | paynesville@ljhooker.com.au



Disclaimer: All information contained therein is gathered from relevant third parties sources. We cannot guarantee or give any warranty about the information provided. Interested parties must rely solely on their own enquiries.

LJ Hooker Paynesville | Lakes Entrance | Metung (03) 5156 6166