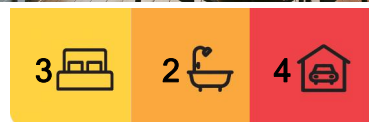




Raymond Island, 183 Western Boulevard

LAKESIDE BLISS - A CHARMING 3 BEDROOM HAVEN WITH BREATHTAKING VIEWS

Indulge in the serenity of this waterfront reserve home boasting stunning lake vistas. With the water just meters from your doorstep you can dive into a world of daily water adventures - paddle boarding, canoeing, boating, and swimming. This charming home features a spacious updated entertaining deck with partial cover, perfect for outdoor living. Enjoy open-plan living with timber floors, vaulted ceilings, and seamless deck access. Three bedrooms, two bathrooms, master with ensuite, invite comfort. Secure yard, garden shed, wood shelter and an 18m x 6m garage/carport combo complete this idyllic lakeside retreat. Unwind as boats sail by and dolphins frolic, surrounded by lush gardens and abundant wildlife. Explore the wonders of nature with flora and fauna at your doorstep. Embrace the ultimate lifestyle property for relaxation and discovery.



For Sale
Please Call

View
ljhooker.com.au/M22FCA

Contact
Lorraine Edlington
0437 532 860
ledlington.paynesville@ljhooker.com.au



Disclaimer: All information contained therein is gathered from relevant third parties sources. We cannot guarantee or give any warranty about the information provided. Interested parties must rely solely on their own enquiries.

LJ Hooker Paynesville | Lakes Entrance | Metung
(03) 5156 6166

More About this Property

Property ID	M22FCA
Property Type	House
Land Area	688 m2
Including	Ensuite Air Conditioning Toilets (2) Dishwasher Outdoor Entertaining

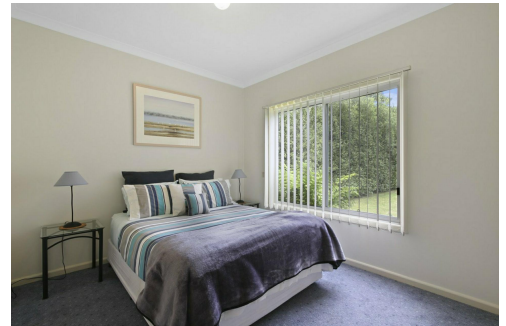
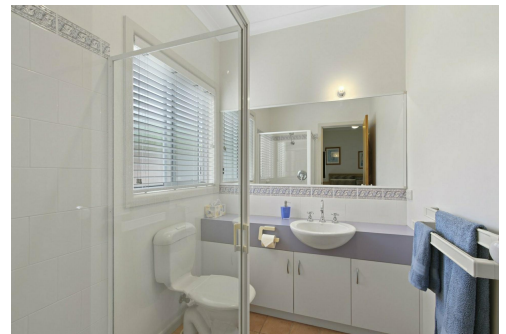
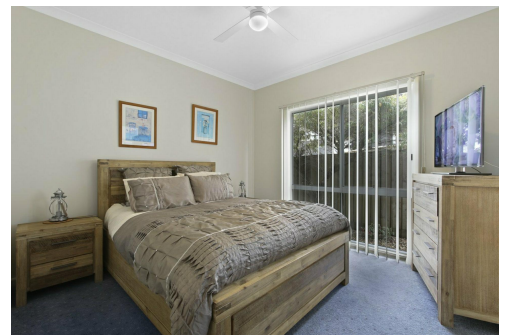
Lorraine Edlington 0437 532 860

Officer In Effective Control | Licensed Estate Agent |
ledlington.paynesville@ljhooker.com.au

LJ Hooker Paynesville | Lakes Entrance | Metung (03) 5156 6166

25A Esplanade, PAYNESVILLE VIC 3880

paynesville.ljhooker.com.au | paynesville@ljhooker.com.au



Disclaimer: All information contained therein is gathered from relevant third parties sources.
We cannot guarantee or give any warranty about the information provided. Interested parties must rely solely on their own enquiries.

**LJ Hooker Paynesville | Lakes
Entrance | Metung
(03) 5156 6166**

1st floor plan showing the layout of the house. The plan includes a Living area (4.2x6.6), Kitchen (4.2x4.5), Dining area (4.2x4.5), three Bedrooms (BED 1: 3.0x3.5, BED 2: 3.0x3.3, BED 3: 3.0x3.5), two Bathrooms (BATH, ENS), a Linen closet (L' DRY), a Walk-in wardrobe (WIR), and a Deck. The plan also shows a front porch (P) and a side porch (F).

**LJ Hooker Paynesville | Lakes
Entrance | Metung
(03) 5156 6166**