



24 Ethel Street, Ravenshoe

## Location, Location, Location




Welcome to your new sanctuary, perfectly situated at the end of a quiet cul-de-sac, overlooking the school sports field. This delightful home is just 500 meters from the bustling main street of Ravenshoe, where you'll find an array of shops, cafes, a post office, and a supermarket.

This inviting block home features three spacious bedrooms, providing plenty of room for family and guests. The open-plan living area seamlessly combines the kitchen, dining, and lounge spaces, creating a warm and welcoming atmosphere for entertaining or relaxing.

The rear of the home has been thoughtfully extended, maximizing functionality with a well-appointed bathroom, laundry, and a separate toilet. Plus, there's an additional room that can serve as an office, extra bedroom, or storage space to suit your needs.

Step outside to discover a generous backyard, complete with a lock-up shed and flourishing veggie gardens-perfect for the green thumb in your family.

Property is tenanted so please allow minimum 48 hours notice for inspections.

3  1  1 

### FOR SALE

Offers Over \$240,000

### AGENTS

Alex Payne

0409 328 153

[alex@ljhookerpropertyplus.com](mailto:alex@ljhookerpropertyplus.com)

### AGENCY

LJ Hooker Atherton

(07) 4091 3144

All information contained therein is gathered from relevant third parties sources. We cannot guarantee or give any warranty about the information provided. Interested parties must rely solely on their own enquiries.



Contact exclusive marketing agent Alex Payne today on 0409 328 153.

## MORE DETAILS

|               |         |
|---------------|---------|
| Property ID   | S4SF1S  |
| Property Type | House   |
| Land Area     | 1012 m2 |

**Alex Payne 0409 328 153**

Property Sales Consultant | [alex@ljhookerpropertyplus.com](mailto:alex@ljhookerpropertyplus.com)

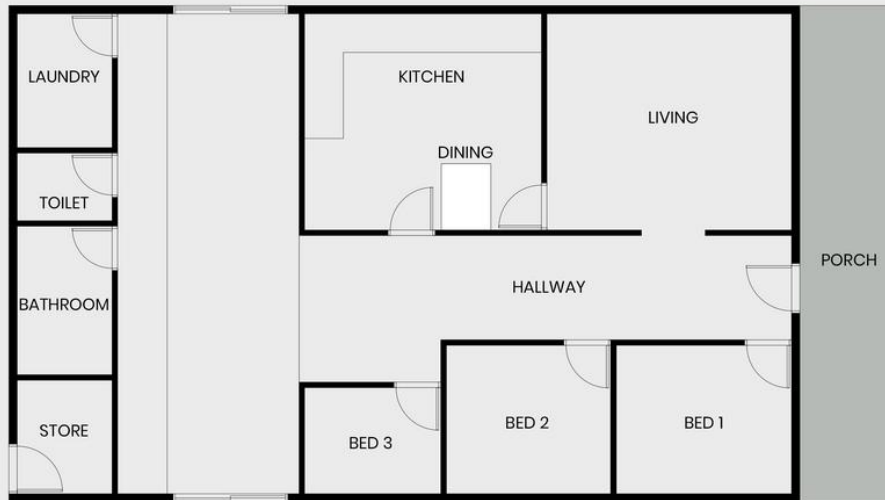
**LJ Hooker Atherton (07) 4091 3144**

10 Main Street, ATHERTON QLD 4883

[atherton.ljhooker.com.au](http://atherton.ljhooker.com.au) | [atherton@ljhatherton.com](mailto:atherton@ljhatherton.com)



## 24 Ethel Street, Ravenshoe



This floor plan including furniture, fixture measurements and dimensions are approximate and for illustrative purposes only. BoxBrownie.com gives no guarantee, warranty or representation as to the accuracy and layout. All enquiries must be directed to the agent, vendor or party representing this floor plan.

