

## Ravensbourne, A/7 Athol Place

### Modern & Stylish with Breathtaking Views!

Step inside this stunning 2021-built home and experience modern living at its finest. With a sleek, contemporary design and low-maintenance features, this home is perfect for families or professionals looking for comfort, space, and style.

At the heart of the home, the expansive kitchen is an entertainer's dream, boasting ample storage, a butler's pantry with a window outlook, and seamless flow to the open-plan lounge and dining area. Soak in the 360-degree views as you relax or host guests, with effortless indoor-outdoor flow onto the elevated deck, an ideal spot to enjoy your morning coffee or unwind at the end of the day.

The clever layout offers space and separation, with one bedroom and the main bathroom (featuring both a bath and shower) located upstairs, while the remaining three bedrooms are tucked away downstairs. The master suite is a true retreat, complete with a large walk-in wardrobe, private ensuite, and sliding door access to the lower deck, your own

4 

2 

2 

#### For Sale

Enquiries Over \$820,000

#### View

[ljhooker.co.nz/734GEX](http://ljhooker.co.nz/734GEX)

#### Contact

**Paul Anderton**

0273 413 733

[paul@ljhmosgiel.co.nz](mailto:paul@ljhmosgiel.co.nz)

**Caitlin Anderton**

021 0823 2583

[caitlin@ljhmosgiel.co.nz](mailto:caitlin@ljhmosgiel.co.nz)

sanctuary to take in the fresh air and peaceful surroundings. The two additional downstairs bedrooms are generous in size, serviced by a separate toilet for added convenience.

Outside, the easy-care back section ensures more time spent enjoying the home rather than maintaining it. The double garage provides secure parking and extra storage, while the home's proximity to town and breathtaking harbour views makes this an opportunity too good to miss.

Modern, stylish, and move-in ready, this home is waiting for you!

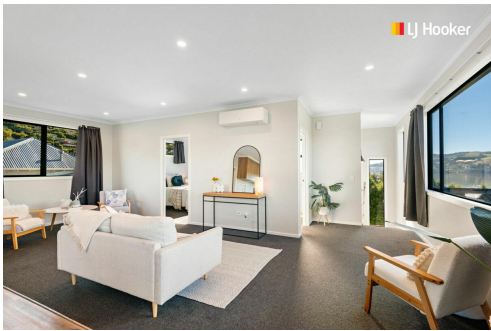
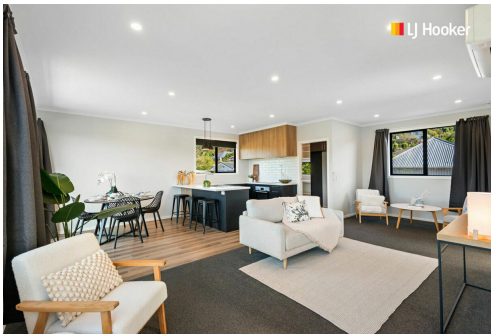
Don't just imagine it, come see it for yourself.

## More About this Property

Property ID	734GEX
Property Type	House
House Size	177 m2
Land Area	540 m2
Licensed Real Estate Agents (REAA2008)	

**Paul Anderton 0273 413 733**  
Licensee | paul@ljhmosgiel.co.nz  
**Caitlin Anderton 021 0823 2583**  
Licensee | caitlin@ljhmosgiel.co.nz.

**LJ Hooker Mosgiel (03) 489 6800**  
Wayne Graham Realty Ltd  
9 Factory Road, MOSGIEL 9024  
mosgiel.ljhooker.co.nz | mosgiel@ljhmosgiel.co.nz



**Disclaimer:** All information contained therein is gathered from relevant third parties sources. We cannot guarantee or give any warranty about the information provided. Interested parties must rely solely on their own enquiries.

**LJ Hooker Mosgiel**  
**(03) 489 6800**  
Wayne Graham Realty Ltd