



5 Hillcrest Avenue, Rathmines

OPPORTUNITY IS KNOCKING!

Welcome to 5 Hillcrest Avenue. Set in a picturesque suburb, this home is just moments from the water's edge and is full of upside.

A perfect opportunity for first home buyers and savvy investors with space galore to add value or make this home your own. The home features a large floorplan with 5 bedrooms, home office and multiple living areas plus plenty of parking with internal access double garage and carport.

The home is located just a stroll to the waterfront reserve and is in close proximity to schools, parks, boat ramps and the shopping village.

PROPERTY HIGHLIGHTS

- Large floorplan
- Spacious bedrooms
- Walk to the lake
- Attached garage plus carport
- Level land
- Opportunity to add value
- Close proximity to local parks, schools, shops & boat ramps

The information contained herein has been provided by people we

5 🏠 2 🚰 3 🚗

FOR SALE
\$717,000

AGENTS

Lachlan Porter
0435 737 131
lachlan.porter@ljhooker.com.au

Telisha Moffat
0481 157 243
telisha.moffat@ljhooker.com.au

AGENCY

LJ Hooker Lake Macquarie
(02) 4915 3800

All information contained therein is gathered from relevant third parties sources. We cannot guarantee or give any warranty about the information provided. Interested parties must rely solely on their own enquiries.



believe to be reliable, however all interested parties must rely on their own enquiries.

MORE DETAILS

Property ID	ZDSF7Q
Property Type	House
Land Area	373.1 m2
Including	Ensuite
	Toilets (2)
	Built-in-Robes
	Close to Schools
	Close to Shops
	Close to Transport

Lachlan Porter 0435 737 131

Sales Executive | Independent Contractor |
lachlan.porter@ljhooker.com.au

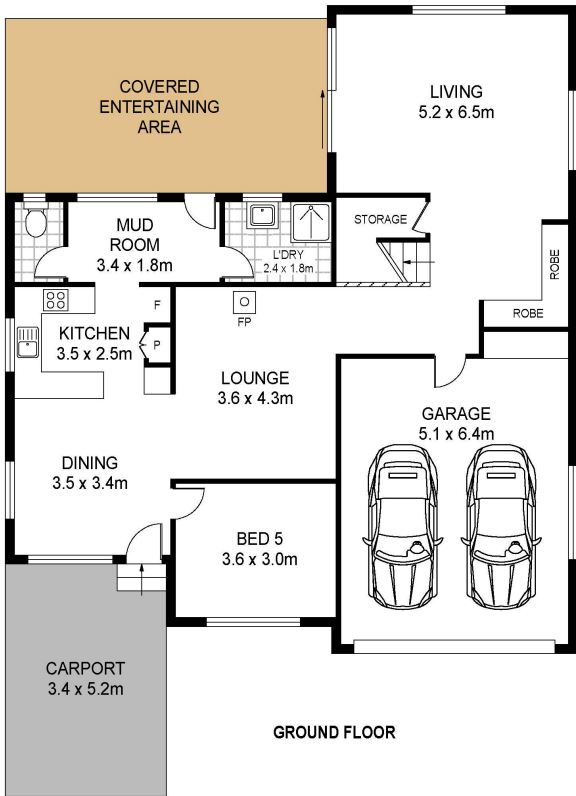
Telisha Moffat 0481 157 243

Sales Associate to Lachlan Porter | telisha.moffat@ljhooker.com.au

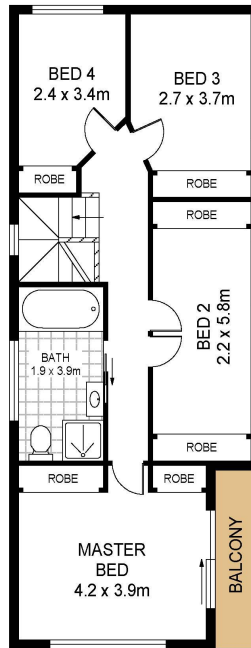
LJ Hooker Lake Macquarie (02) 4915 3800

Shop 12, 240-260 Hillsborough Road, WARNERS BAY NSW 2282
lakemacquarie.ljhooker.com.au | warnersbay@ljhooker.com.au

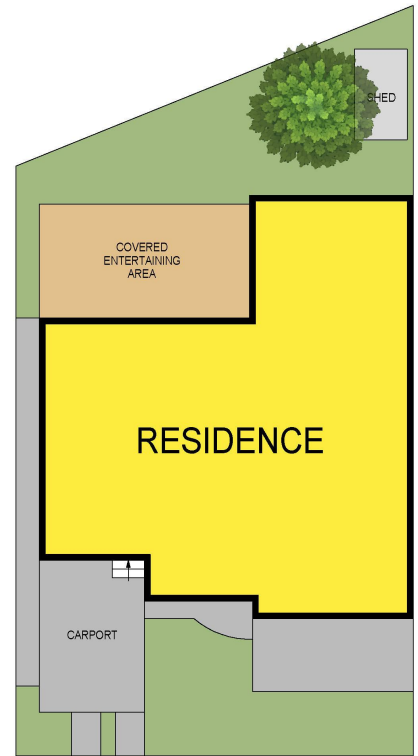




GROUND FLOOR



FIRST FLOOR



5 Hillcrest Avenue
Rathmines



Total Internal Floor Area: 217 sqm

Scale in metres. Indicative only. Dimensions are approximate. All information contained herein is gathered from sources we believe to be reliable. However we cannot guarantee its accuracy and interested persons should rely on their own enquiries.



All information contained therein is gathered from relevant third parties sources. We cannot guarantee or give any warranty about the information provided. Interested parties must rely solely on their own enquiries.

