



8 Durnley Court, Rasmussen

Massive home for Low to mid \$700,000's


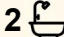
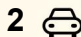
If you think you know Rasmussen, think again.

Most buyers walk into a four bedroom home expecting to compromise. Usually it's Smaller bedrooms, A tight living area and A token outdoor space. This house is where that expectation gets dismantled.

Set in a quiet family friendly court, this solid single level block home has been renovated with clear intentions. Space, Comfort, modern and easy living.

From the moment you enter the proportions are obvious. To your left the master suite makes an immediate statement. It's large, private, and positioned intelligently at the front of the home. It comes complete with its own modern ensuite. It honestly feels like a true parents' retreat rather than an afterthought.

Continue down the hallway and the home opens dramatically into an extra large white kitchen finished with grey benchtops and modern white tile splashbacks. It is bright, functional and has the bench space serious families actually need. Whether it's school lunches, weekend

4  2  2 

FOR SALE

Low to mid \$700,000's

AGENTS

Clinton Wallis
0403 180 181
clint.wallis@ljhooker.com.au

AGENCY

LJ Hooker Townsville
07 44262125

All information contained therein is gathered from relevant third parties sources.
We cannot guarantee or give any warranty about the information provided.
Interested parties must rely solely on their own enquiries.

 **LJ Hooker**

entertaining or hosting the extended family, this kitchen carries the load without feeling crowded.

To the right sits the first oversized living zone that's already set up for an extra large television. This is where movie nights become events. But just when you think you have seen the main entertaining space the home expands again.

The second living area overlooks the patio and one of the largest suburban pools you are likely to see. It includes built in storage and a study desk, making it perfect for homework supervision or a work from home situation. This space is also large enough to fit a pool table without worrying about the cue's hitting the walls. That alone tells you something about the size on offer here.

Three additional generous bedrooms are positioned privately within the home and are serviced by a renovated main bathroom that's finished perfectly with floor to ceiling tiles and a spa bath. The design is modern, spacious, and easy to maintain. The laundry continues the theme of practicality with ample space and a smart layout.

Throughout the home you will find tiled or easy clean flooring. No carpets. For allergy sufferers, pet owners, or anyone who owns a robot vacuum and mop, that detail matters more than most people realise. It's also fully airconditioned and comes complete with a large solar system to keep the summer power bills down.

Step outside and the property separates itself completely. The fully concreted undercover patio flows seamlessly from the second living zone and overlooks a pool that is genuinely oversized for suburban living. This is not a plunge pool. It is a centrepiece. Summer here will look very different with the kids.

The home is constructed from solid block, offering durability and long term peace of mind. It is executive in scale yet positioned in a quiet court where kids can ride bikes and families can settle in.

If you are searching for something small this home is not it. If you want cramped living areas and no room to entertain, keep looking. But if you have been frustrated by homes that promise space and don't deliver, this one deserves your inspection.

Large, Renovated, Practical and Family focused. Homes of this scale in Rasmussen do not sit around.

Do not miss out, book your inspection today '°'…¸'

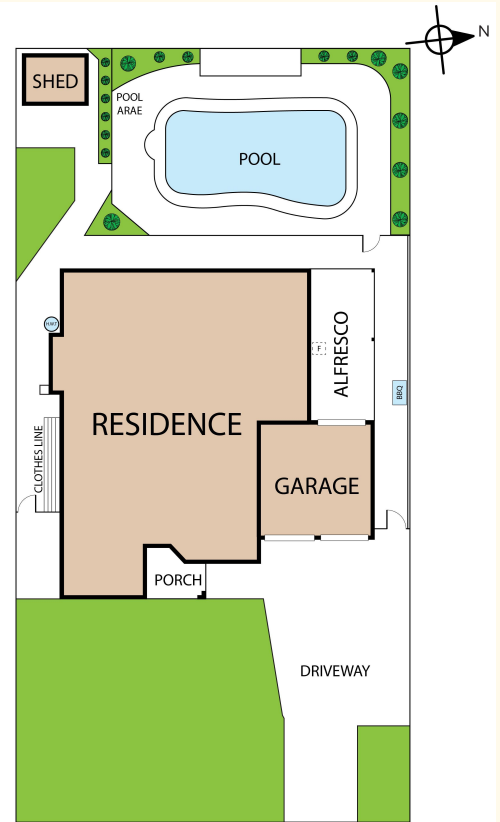
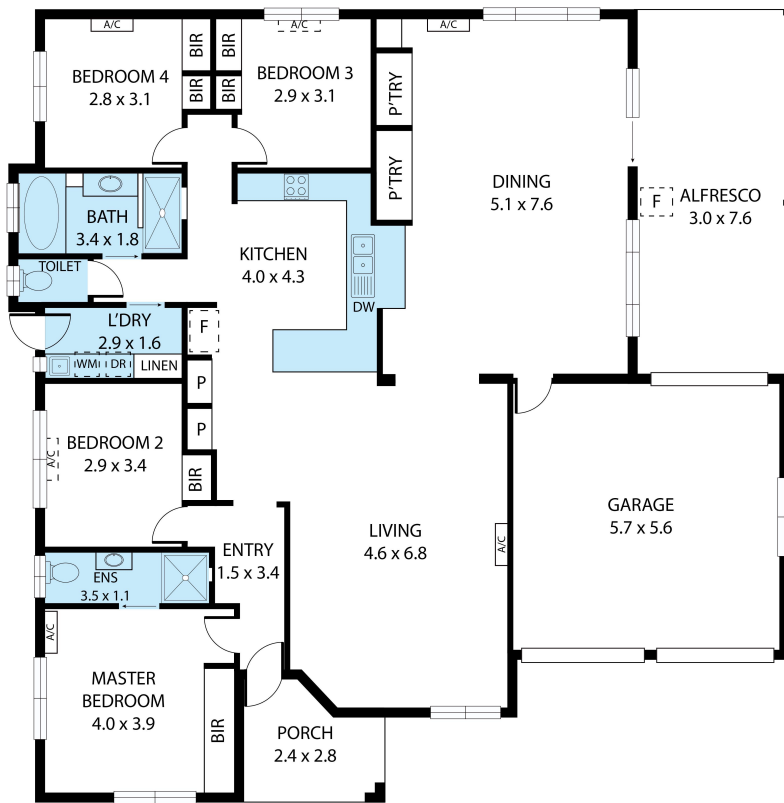
MORE DETAILS

Property ID 488HWK
Property Type House

Clinton Wallis 0403 180 181
Director / Principal | clint.wallis@ljhooker.com.au

LJ Hooker Townsville 07 44262125
Shop 18/39 Eyre Street, NORTH WARD QLD 4810
townsville.ljhooker.com.au | townsville@ljhooker.com.au





LIVING	:	168 SQ.M
PORCH	:	6 SQ.M
ALFRESCO	:	24 SQ.M
GARAGE	:	32 SQ.M
TOTAL	:	230 SQ.M

8 Durnley Court, Rasmussen, QLD, 4815
 TOTAL APPROX. FLOOR AREA 230 SQ.M

Whilst every attempt has been made to ensure the accuracy of the floor plan contained here, measurements of doors, windows, rooms and any other items are approximate and no responsibility is taken for any error, omission, or misstatement. This plan is for illustrative purposes only and should be used as such by any prospective purchaser.

All information contained therein is gathered from relevant third parties sources.
 We cannot guarantee or give any warranty about the information provided.
 Interested parties must rely solely on their own enquiries.