



Randwick Park, 1/5 & 2/5 Solveig Place

BUY ONE – OR BUY BOTH! YOU DECIDE

What would you do with a sizeable section in one of Auckland's greatest growth spots? That is your choice here with the opportunity to grab either 1/5 Solveig Place or 2/5 Solveig Place – or both!

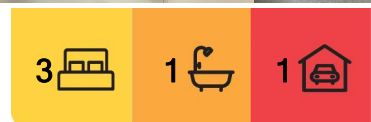
The two homes, which combined sit on a generous 905m² cross-lease section of mixed housing urban zoned land, lie side by side, making it an amazing spot to build new homes or landbank.

What's even better is that while you ponder your plans, the tenants of both properties are keen to stay on, providing you with instant income and room to think! How often do you get that opportunity?

But first home buyers shouldn't despair either, either of these properties is ideal



Disclaimer: All information contained therein is gathered from relevant third parties sources. We cannot guarantee or give any warranty about the information provided. Interested parties must rely solely on their own enquiries.



For Sale
\$629,000

View
By Appointment

Contact
Jas Sandhu
021 975 752
jas.manurewa@ljhooker.co.nz

LJ Hooker Manurewa
(09) 268 0454

Realty 2000 Ltd – Licensed Real Estate

for getting on to the property ladder and starting your future. Both have three bedrooms, a spacious open-plan kitchen and dining, a separate cosy lounge and a family bathroom. And, they've both got their own carport and garden. It's the ideal setup for couples or young families.

The location here will always be a draw. The properties sit on a family-orientated and peaceful cul-de-sac with fantastic motorway access. The homes are in zone for - and within walking distance of or a short bus ride from - Randwick Park School and Alfriston College, while Auckland Botanic Gardens are ideal for family time at the weekend. Between Takanini and Manurewa, all your shops and eateries are sorted.

Whatever you do, don't miss out on this premium land in reliable Randwick Park!

Contact Jas on 021 975 752 to arrange a private viewing.

PLEASE NOTE: Specified floor and land area sizes have been obtained from sources such as Property Smarts, Auckland Council (LIM), or Title documents. They have not been measured by the Salesperson or LJ Hooker - Realty 2000 Limited. We recommend you seek your own independent legal advice if these sizes are material to your purchasing decision

More About this Property

Property ID HIPGER

Property Type House

Licensed Real Estate Agents (REAA2008)

Jas Sandhu

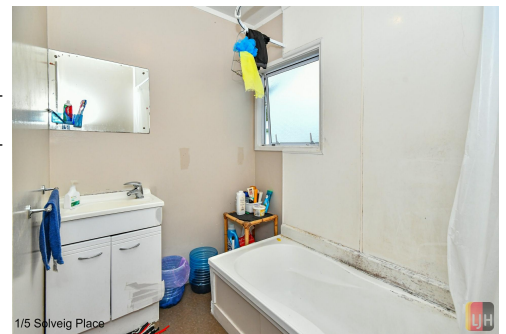
Sales & Marketing Consultant | jas.manurewa@ljhooker.co.nz

LJ Hooker Manurewa (09) 268 0454

Realty 2000 Ltd - Licensed Real Estate Agent REAA 2008

16 Station Road, MANUREWA NZ 2102

manurewa.ljhooker.co.nz | manurewa@ljhooker.co.nz



Disclaimer: All information contained therein is gathered from relevant third parties sources. We cannot guarantee or give any warranty about the information provided. Interested parties must rely solely on their own enquiries.

**LJ Hooker Manurewa
(09) 268 0454**

Realty 2000 Ltd - Licensed Real Estate