



150/2-26 Wattle Crescent, Pyrmont

Ready to enjoy

Perched high in the "Parkview Tower" complex, this tastefully updated apartment offers modern living with enviable northwest aspect.

- Generous living and dining area with polished floor throughout
- Sundrenched and covered balcony ideal for outdoor entertaining
- Practical sunroom perfect for study/home office
- Designer's kitchen with stone finish, glass splashback and gas appliances
- 2 generous bedrooms, both with built-in robe
- 2 deluxe bathrooms, ensuite with bath and separate shower
- Updated laundry room offering additional storage space
- Reverse cycle air conditioning in living room and master bedroom
- Extra wide parking space for car and motor bike/scooter and storage
- Resort style facilities including heated pool, sauna, gym and outdoor BBQ area
- Well maintained building with attentive concierge and reasonable strata levy
- Light rail station at your doorstep, short stroll to Darling Harbour and Sydney CBD
- Only minutes away from Pyrmont's renowned cafes, restaurants and supermarket
- Right opposite the new state of art Sydney Fish Market
- Moments to Harbour foreshore and promenade

2 🚗 2 🚲 1 🚘

FOR SALE

\$1,050,000 to \$1,150,000

AGENTS

John Zheng
0408 330 118
john.zheng@ljhooker.com.au

Tara Phillips
info.pyrmont@ljhooker.com.au

AGENCY

LJ Hooker Pyrmont
(02) 9660 8933

All information contained therein is gathered from relevant third parties sources.
We cannot guarantee or give any warranty about the information provided.
Interested parties must rely solely on their own enquiries.

 **LJ Hooker**

Price guide: \$1,050,000 to \$1,150,000

Contact: John Zheng 0408 330 118

Size: 129m2 (Apartment 101m2, carspace 28m2)

MORE DETAILS

Property ID	SHEGNZ
Property Type	Apartment
House Size	101 m2
Land Area	129 m2

John Zheng 0408 330 118

Director, Licensee | john.zheng@ljhooker.com.au

Tara Phillips

Team Assistant | info.pyrmont@ljhooker.com.au

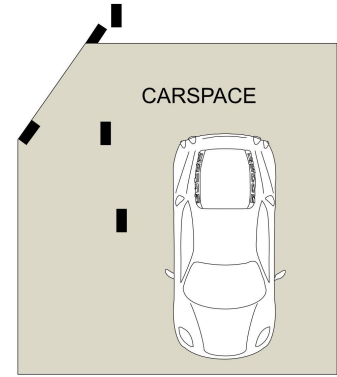
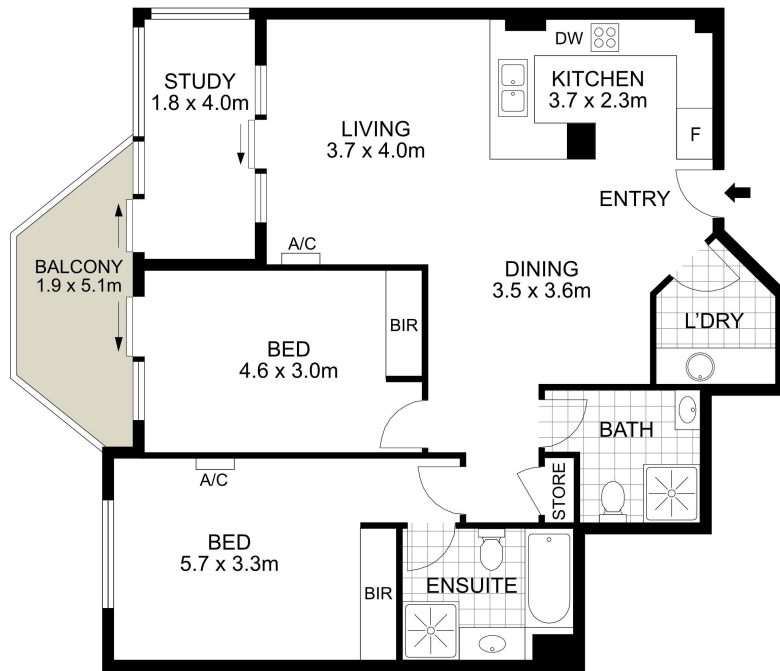
LJ Hooker Pyrmont (02) 9660 8933

461 Harris Street, ULTIMO NSW 2007

pyrmont.ljhooker.com.au | pyrmont@ljhooker.com.au



All information contained therein is gathered from relevant third parties sources.
We cannot guarantee or give any warranty about the information provided.
Interested parties must rely solely on their own enquiries.



LJ Hooker
Pymont | Ultimo



150/2-26 Wattle Crescent, Pymont

PLANS SHOWN ONLY INDICATIVE OF LAYOUT. DIMENSIONS ARE APPROXIMATE.
Measurements are approximate and not to scale. The vendor, agency and supplier will accept no liability for its accuracy. Interested parties are advised to make their own independent enquiries.

All information contained therein is gathered from relevant third parties sources.
We cannot guarantee or give any warranty about the information provided.
Interested parties must rely solely on their own enquiries.

LJ Hooker