

## Pymble, 6 Cadow Street

### Spacious Family Home in Prime Pymble Location

Welcome to this spacious and elegant family residence situated in the heart of Pymble, offering a comfortable and sophisticated lifestyle. This property features generous indoor living areas, modern kitchen and bathrooms, beautiful landscaped gardens, and a versatile garage space—perfect for families and entertaining.

Situated on a superb 878sqm block within a quality street, this solid dual-level home offers endless possibilities. Featuring generously-sized rooms with impressive dimensions, options include enjoying the existing layout, renovating to a contemporary standard, reconfiguring, or potential rebuild (STCA). Constructed entirely of double brick and positioned on a sandstone base, the home is perfectly oriented towards the north to maximize natural light.

Features include:

- Solid double brick home on 878sqm in a quiet, quality street



**Disclaimer:** All information contained therein is gathered from relevant third parties sources. We cannot guarantee or give any warranty about the information provided. Interested parties must rely solely on their own enquiries.

3

2

2

**For Sale**  
Contact Agent

**View**  
By Appointment

**Contact**  
**Candy Pan**  
0406 680 686  
candy.p@ljhookergordon.com.au

**LJ Hooker Gordon**  
**(02) 9496 8000**



- Landscaped gardens, north-facing terrace
- Fenced yard perfect for relaxing outdoors
- Large front entertainer's terrace
- Multiple living areas, including studio with kitchenette and spacious terrace.
- Formal lounge and dining area with fireplace ideal
- Open-plan kitchen with premium appliances
- High ceilings, decorative cornices, and ducted heating
- 3 spacious bedrooms, master with ensuite, others with built-in robes.
- Double lock-up garage, under-house storage, and large workshop
- Walk to buses, Gordon West Public School, close to rail and shops

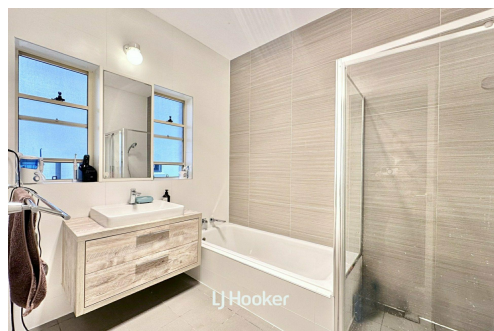
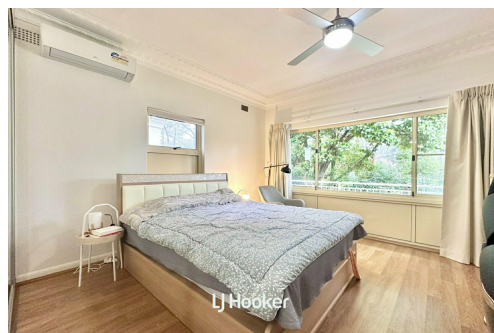
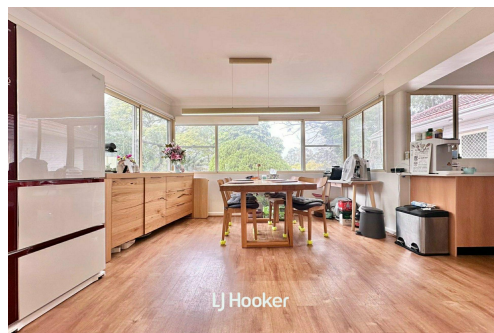
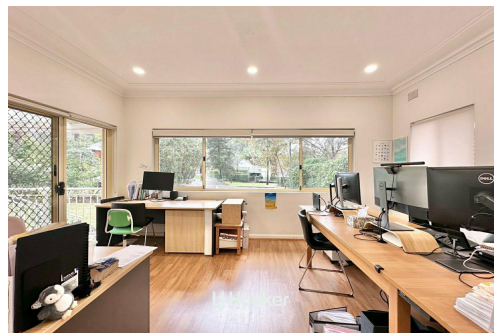
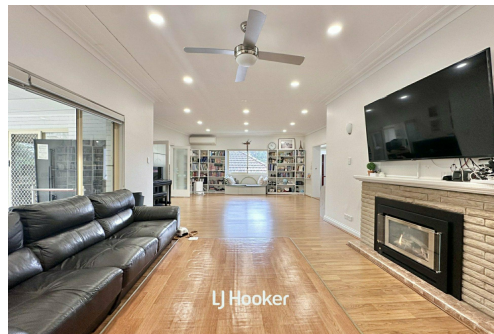
DISCLAIMER: All information contained herein is gathered from sources that we believe reliable. We have no reason to doubt its accuracy, however we cannot guarantee it. This information is not to be used in formalising any decision nor used by a third party without the expressed written permission of LJ Hooker Gordon.

## More About this Property

Property ID	T1HHJX
Property Type	House
Land Area	878 m2
Including	Toilets (2)

**Candy Pan 0406 680 686**  
Sales Executive | [candy.p@ljhookergordon.com.au](mailto:candy.p@ljhookergordon.com.au)

**LJ Hooker Gordon (02) 9496 8000**  
Shop 1, 777-779 Pacific Highway, GORDON NSW 2072  
[gordon.ljhooker.com.au](http://gordon.ljhooker.com.au) | [reception@ljhookergordon.com.au](mailto:reception@ljhookergordon.com.au)



**Disclaimer:** All information contained therein is gathered from relevant third parties sources. We cannot guarantee or give any warranty about the information provided. Interested parties must rely solely on their own enquiries.

**LJ Hooker Gordon**  
**(02) 9496 8000**