

Pymble, 25 Knowlman Avenue

Charming Brick Home in Prime East Side Location

Positioned on Pymble's desirable east side, this family home is situated on an 834.7 sqm sunny block of land with an in-ground swimming pool and established gardens. Offering a flexible, flowing plan with spacious indoor and outdoor entertaining areas.

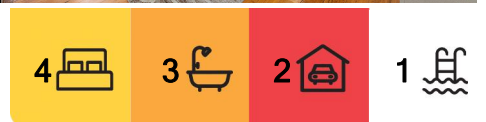
Perfectly placed in a quiet, leafy street close to Pymble and Gordon centres, railway stations, nearby Ravenswood and PLC Colleges, and immediate proximity to Gordon East Public. Killara High School zone. Walk to Richmond Park nature reserve.

Easy access to Knox, Abbotsleigh, Barker, Sydney Grammar, and Sacred Heart Catholic School.

This spacious brick home, ideal to accommodate growing families and perfect for indoor and outdoor entertainment. Clever blend of traditional elegance focusing on stylish family living with a lot of space and privacy.



Disclaimer: All information contained therein is gathered from relevant third parties sources. We cannot guarantee or give any warranty about the information provided. Interested parties must rely solely on their own enquiries.



For Sale
SOLD!

View
ljhooker.com.au/SU6HJX

Contact
Natalie Pavlova
0413 416 381
npavlova@ljhookergordon.com.au

LJ Hooker Gordon
(02) 9496 8000

Featuring:

- 4 bedrooms with built-ins plus a study/office
- 3 bathrooms, 1 powder room, and 1 more toilet
- Formal living/dining room with gas fireplace
- Modern kitchen flows easily to connect with a large family room and the covered sundeck perfect for BBQ
- Rumpus room opens to swimming pool and gardens
- Double lock-up garage and ample off- street parking

This unique, spacious family home with a warm and welcoming atmosphere is a dream place to cherish for years to come

- Situated on 834.7 sqm of desirable land
- Charming family home with great entertaining areas
- Large family room, covered sundeck
- Modern kitchen with dishwasher & gas hot water
- Polished timber floorboards throughout
- Split air conditioning system
- In-ground swimming pool
- Established native gardens
- Stroll to Gordon East public school. Killara High Zone
- Enjoy your dream place with beautiful surrounds

DISCLAIMER: All information contained herein is gathered from sources that we believe reliable. We have no reason to doubt its accuracy, however we cannot guarantee it. This information is not to be used in formalising any decision nor used by nor used by a third party without the expressed written permission of LJ Hooker Gordon.

More About this Property

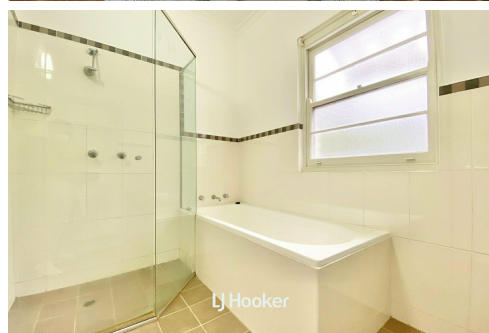
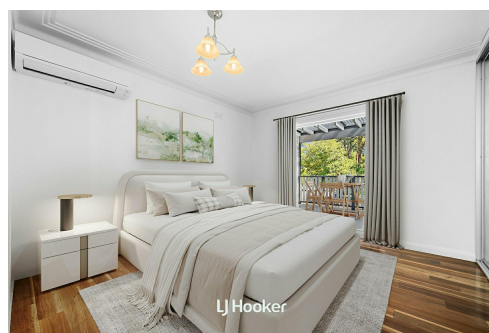
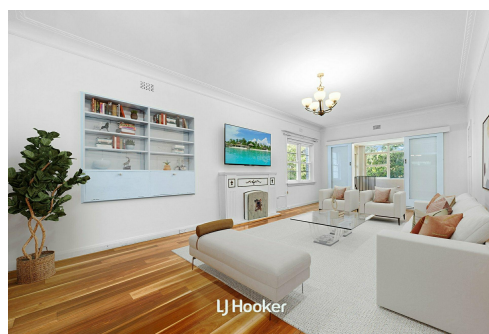
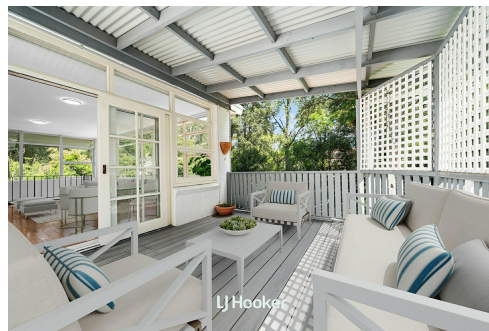
Property ID	SU6HJX
Property Type	House
Land Area	834.7 m2
Including	Study Air Conditioning Toilets (4) Pool Courtyard Deck Dishwasher Outdoor Entertaining Built-in-Robes Secure Parking

Natalie Pavlova 0413 416 381
Sales Executive | npavlova@ljhookergordon.com.au

LJ Hooker Gordon (02) 9496 8000
Shop 1, 777-779 Pacific Highway, GORDON NSW 2072
gordon.ljhooker.com.au | reception@ljhookergordon.com.au



Disclaimer: All information contained therein is gathered from relevant third parties sources. We cannot guarantee or give any warranty about the information provided. Interested parties must rely solely on their own enquiries.



LJ Hooker Gordon
(02) 9496 8000



Disclaimer: Scale in metres. Dimensions are approximate. All information contained herein is gathered from sources we believe to be reliable. However, we cannot guarantee its accuracy and interested persons should rely on their own enquiries.

25 Knowlman Avenue, Pymble

Internal Floor Area: 193sqm (approx.)

Land Size: 834.7sqm (approx.)



LJ Hooker Gordon
(02) 9496 8000

Disclaimer: All information contained therein is gathered from relevant third parties sources. We cannot guarantee or give any warranty about the information provided. Interested parties must rely solely on their own enquiries.