

## Pymble, 602/12 Avon Rd

Another SOLD by Kenny Gong and His Team

Set within a secure and contemporary complex, this beautifully appointed apartment promises generous proportions, modern finishes, and a lifestyle of effortless convenience. Natural light fills the expansive open plan living and dining area, where solid bamboo floors and bright interiors create a warm and welcoming ambiance. Flowing seamlessly outdoors, two sun-drenched balconies offer inviting spaces for alfresco dining, morning coffee, or quiet relaxation.

The stylish kitchen is both functional and elegant, featuring stainless steel appliances and gas cooking - ideal for those who love to entertain or enjoy everyday cooking with ease.

Two generously sized bedrooms include built-in wardrobes, while a full-sized internal laundry, linen cupboard, and split system air conditioning enhance comfort and practicality.

A benefit from peace of mind with video intercom, an onsite manager, and secure lift



**Disclaimer:** All information contained therein is gathered from relevant third parties sources. We cannot guarantee or give any warranty about the information provided. Interested parties must rely solely on their own enquiries.



**For Sale**  
Another SOLD

**View**  
[ljhooker.com.au/SGDHJX](http://ljhooker.com.au/SGDHJX)

**Contact**  
**Kenny Gong**  
0456 887 000  
kgong@ljhookergordon.com.au

**Ben Chen**  
0421 838 789  
benchen@ljhookergordon.com.au

**LJ Hooker Gordon**  
**(02) 9496 8000**

access to the basement car space and storage cage. Exclusive resident access to onsite gym and sauna facilities.

Positioned just a short stroll to Pymble Station and local shops, this home is ideally located within the Pymble Public School catchment and moments from elite private schools including Pymble Ladies' College, Ravenswood, Abbotsleigh and Knox Grammar. Enjoy effortless connectivity to Chatswood CBD and beyond, with trains just minutes away.

#### Property Features:

- Expansive open plan living with floorboards & excellent natural light
- Two sun-drenched balconies ideal for year-round outdoor enjoyment
- Contemporary kitchen with gas cooking and stainless steel appliances
- Two generously sized bedrooms with built-in wardrobes
- Full internal laundry, linen cupboard, and split system A/C
- Secure building with video intercom and onsite manager
- Lift access to secure basement parking and storage cage
- Residents-only access to gym and sauna facilities
- Within the Pymble Public School catchment
- 600m to Pymble Ladies' College, 5-minute walk to Pymble Station
- Easy access to Ravenswood, Knox Grammar, Abbotsleigh & Chatswood

**DISCLAIMER:** All information contained herein is gathered from sources that we believe reliable. We have no reason to doubt its accuracy, however we cannot guarantee it. This information is not to be used in formalising any decision nor used by a third party without the expressed written permission of LJ Hooker Gordon.

## More About this Property

|                      |             |
|----------------------|-------------|
| <b>Property ID</b>   | SGDHJX      |
| <b>Property Type</b> | Apartment   |
| <b>House Size</b>    | 102 m2      |
| <b>Including</b>     | Toilets (1) |

#### Kenny Gong 0456 887 000

Managing Director | Sales Executive | [kgong@ljhookergordon.com.au](mailto:kgong@ljhookergordon.com.au)

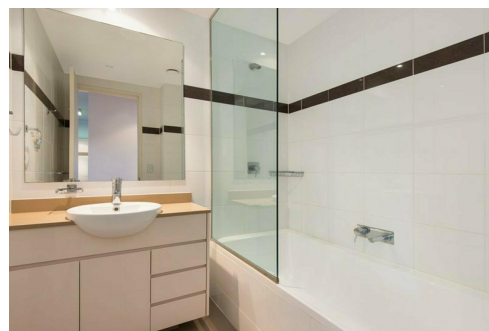
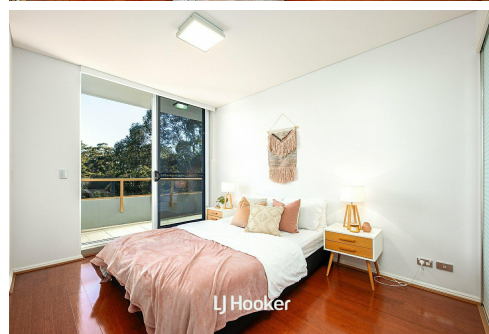
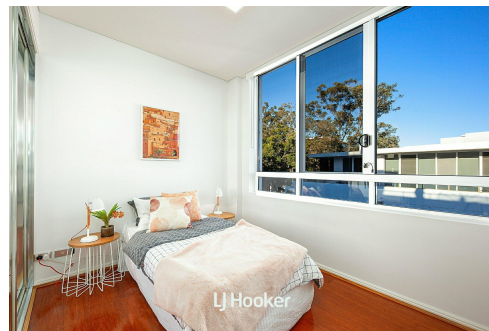
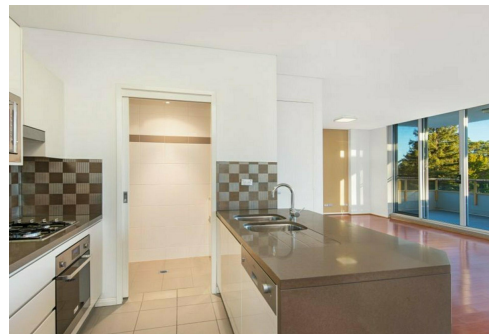
#### Ben Chen 0421 838 789

Sales Executive | [benchen@ljhookergordon.com.au](mailto:benchen@ljhookergordon.com.au)

#### LJ Hooker Gordon (02) 9496 8000

Shop 1, 777-779 Pacific Highway, GORDON NSW 2072

[gordon.ljhooker.com.au](http://gordon.ljhooker.com.au) | [reception@ljhookergordon.com.au](mailto:reception@ljhookergordon.com.au)

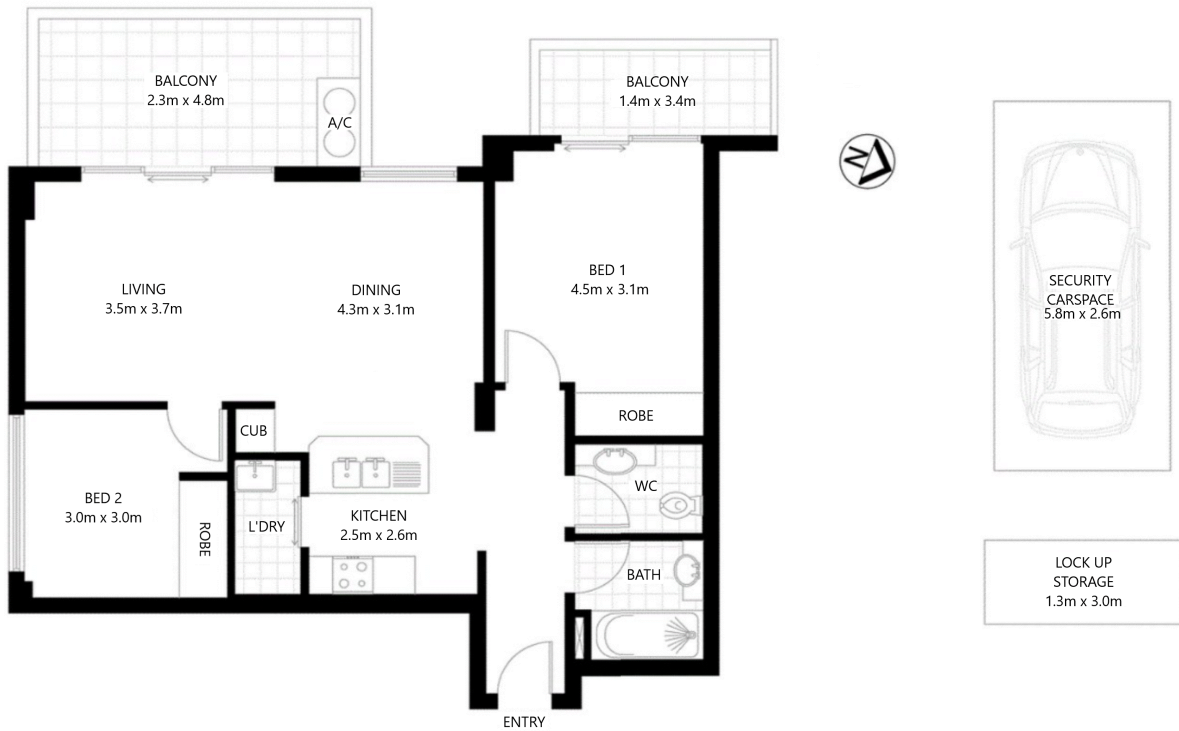


**Disclaimer:** All information contained therein is gathered from relevant third parties sources. We cannot guarantee or give any warranty about the information provided. Interested parties must rely solely on their own enquiries.

**LJ Hooker Gordon**  
**(02) 9496 8000**

**602/12 Avon Road, Pymble NSW 2073**

Internal & Balcony 85 sqm (approx.)  
Car Space & Storage 17 sqm (approx.)  
Total 102 sqm (approx.)



Scale in metres, Dimensions are approximate. All information contained herein is gathered from sources we believe to be reliable, however we cannot guarantee its accuracy and interested persons should rely on their own enquiries.

**LJ Hooker Gordon**