

29/6 Clydesdale Place, Pymble

Spacious & Leafy Sanctuary with Exceptional Privacy and Convenience

Tucked away at the rear of an exclusive, leafy enclave, this elevated apartment blends exceptional space with unmatched privacy and a relaxed lifestyle. Framed by lush treetops and bathed in natural light, it offers a serene retreat while still being only a short stroll to the station, Pymble Ladies' College and local village shops.

Every element has been designed to take advantage of the picturesque outlook. The expansive open-plan living and dining area flows seamlessly to a large entertainer's balcony, overlooking leafy views. A sleek Caesarstone kitchen with premium Miele appliances caters to both everyday living and effortless entertaining.

Three generously sized bedrooms provide comfortable accommodation, all with built-ins, and the master retreat enjoys its own fully tiled ensuite and study area. A stylish main bathroom with a separate shower and bath complements the layout.

Modern comforts include ducted air conditioning, gas outlets, downlighting, video intercom, and lift access. Two secure car spaces

3 2 2

AUCTION

Sat 15th Nov @ 12:00PM

VIEW

Sat 4th Oct @ 12:15PM - 12:45PM

AGENTS

Kenny Gong
0456 887 000
kgong@ljhookergordon.com.au

Vicky Krdanian
0490 719 847
reception@ljhookergordon.com.au

AGENCY

LJ Hooker Gordon
(02) 9496 8000

All information contained therein is gathered from relevant third parties sources.
We cannot guarantee or give any warranty about the information provided.
Interested parties must rely solely on their own enquiries.



and a storage cage add to the ease of living. Peacefully positioned in a cul-de-sac surrounded by established greenery, this address offers a rare combination of tranquillity and convenience, making it an ideal sanctuary within easy reach of everything you need.

Property Features:

- Leafy treetop outlooks with ultimate privacy at the rear of the block
- Expansive open-plan living/dining with seamless indoor-outdoor flow
- Sunlit entertainer's balcony capturing both morning and afternoon light
- Caesarstone gas cooking kitchen with premium Miele appliances
- Spacious bedrooms with built-ins, master with ensuite & study area
- Large, fully tiled main bathroom with separate bath and shower
- Ducted air conditioning, LED downlights, newly installed floorboards
- Two secure car spaces plus storage cage, video intercom, lift access
- Peaceful cul-de-sac setting, close to Pymble Ladies College
- Approx. 700m walk to Pymble Station and Village Shops

DISCLAIMER: All information contained herein is gathered from sources that we believe reliable. We have no reason to doubt its accuracy, however we cannot guarantee it. This information is not to be used in formalising any decision nor used by a third party without the expressed written permission of LJ Hooker Gordon.

MORE DETAILS

Property ID	T3FHJX
Property Type	Apartment
Including	Ensuite Study Ducted Cooling Ducted Heating Toilets (2) Intercom Balcony Dishwasher Outdoor Entertaining Built-in-Robes Secure Parking Remote Garage Fans

Kenny Gong 0456 887 000

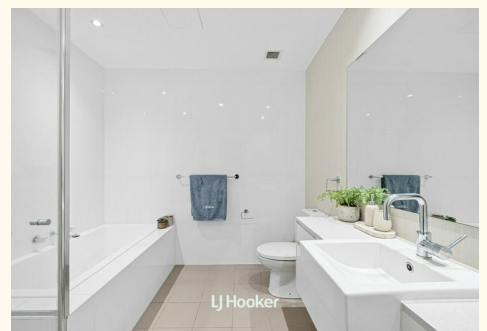
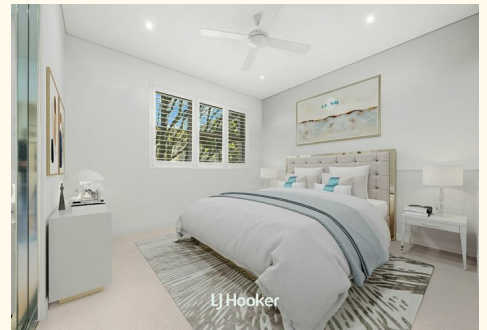
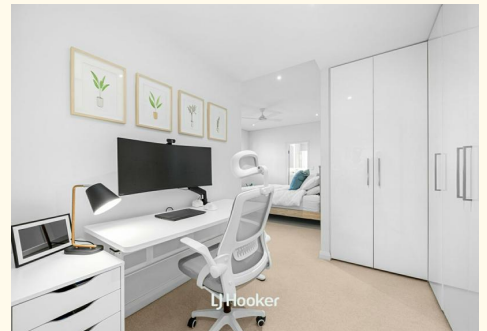
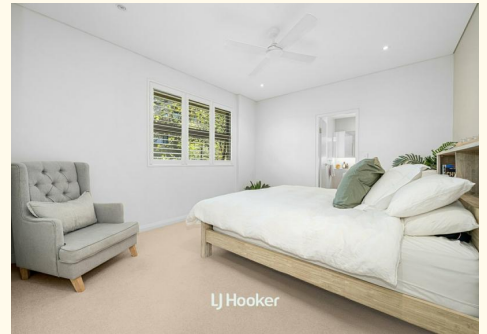
Managing Director | Sales Executive | kgong@ljhookergordon.com.au

Vicky Krdanian 0490 719 847

Sales Associate | reception@ljhookergordon.com.au

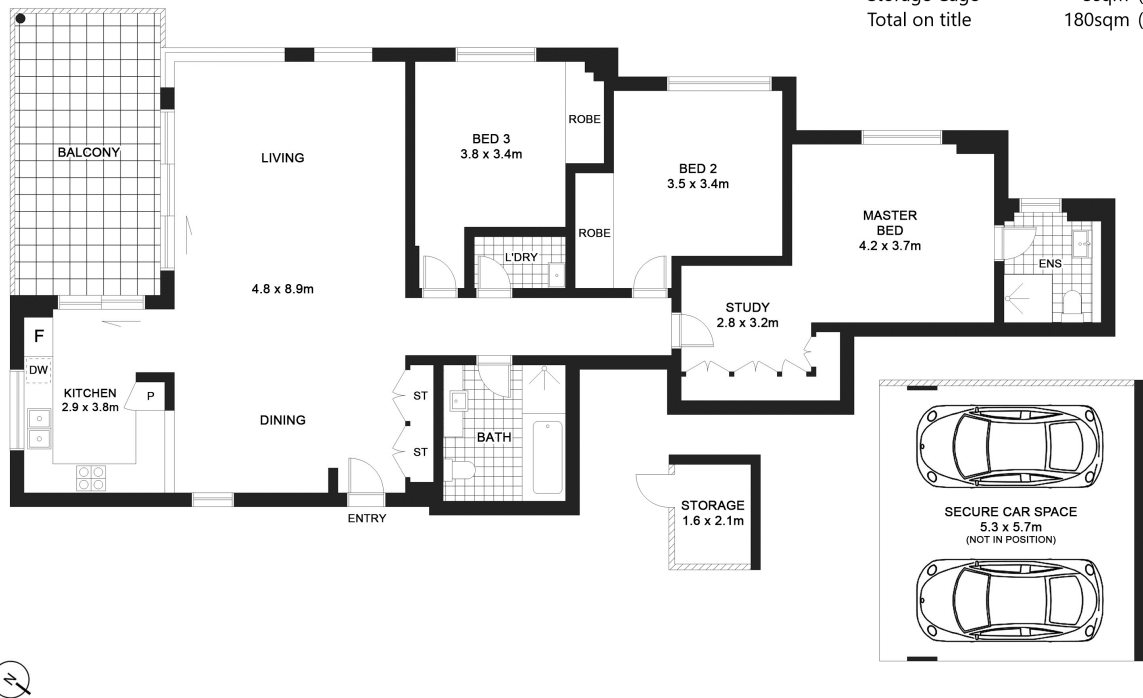
LJ Hooker Gordon (02) 9496 8000

Shop 1, 777-779 Pacific Highway, GORDON NSW 2072
gordon.ljhooker.com.au | reception@ljhookergordon.com.au



29/6 Clydesdale Place, Pymble NSW 2073

Internal and Balcony	146sqm (approx.)
Car Spaces	31sqm (approx.)
Storage Cage	3sqm (approx.)
Total on title	180sqm (approx.)



Scale in metres. Dimensions are approximate. All information contained herein is gathered from sources we believe to be reliable, however we cannot guarantee its accuracy and interested persons should rely on their own enquiries.

LJ Hooker Gordon