



Pukekohe, 61 Muster Road

Prestigious Valley Living

Prestigious Valley Living

Meaning : A brand-new family home in Pukekohe's sought-after Valley zone, offering modern luxury, comfort and convenience.

SPACE

Welcome to 61 Muster Road - a beautifully crafted brick and weatherboard home designed for modern living in one of Pukekohe's most prestigious neighbourhoods. Built to last with quality craftsmanship and a long-term warranty, this residence offers peace of mind and a premium lifestyle.

Step inside and discover 5 bedrooms, 2 living areas, and 2 bathrooms, with thoughtful touches throughout to accommodate family life and entertaining. Expansive open-plan living is the heart of the home, filled with natural light and enhanced by high ceilings, flowing seamlessly to outdoor spaces perfect for gatherings.



Disclaimer: All information contained therein is gathered from relevant third parties sources. We cannot guarantee or give any warranty about the information provided. Interested parties must rely solely on their own enquiries.

5

3

4

For Sale

Price by Negotiation

View

Sat 30th Aug @ 12:30PM - 1:00PM

Contact

Vicky Ward

021 170 1180

vicky@ljhsouth.co.nz

LJ Hooker Pokeno

09 298 4000

Southern Suburbs Realty Ltd

The designer kitchen, complete with premium finishes, serves as the hub for both everyday meals and hosting friends. Retreat to the luxurious master suite, featuring a walk-in wardrobe and private deck access, creating the perfect balance of comfort and elegance. With double glazing, an alarm system, and heat pumps, every detail has been considered to ensure security, efficiency, and year-round comfort.

FEATURES

- Land: 599m2 (approx.)
- House: 240m2 (approx.)
- 5 bedrooms, including master with ensuite and walk-in wardrobe
- 2 bathrooms plus guest toilet
- Expansive open-plan living with high ceilings and natural light
- Designer kitchen with premium finishes
- 2 living areas for flexibility and entertaining
- 2 heat pumps for year-round comfort
- Double garage with secure parking and storage
- Double glazing and alarm system for security and efficiency
- Private deck access from the master bedroom

LOCATION

Located just around the corner from Anselmi Ridge in Pukekohe's prestigious Valley zone, this home is surrounded by quality residences and family-friendly amenities. Valley Primary School and local daycare are within walking distance, while the Bombay Motorway is just 5 minutes away, ensuring an easy commute. Pukekohe town centre, shops, and cafes are also close by, giving you the perfect blend of lifestyle and convenience.

OPPORTUNITY

An exceptional opportunity to secure a brand-new, move-in ready home in a highly sought-after neighbourhood. Ideal for families seeking space, comfort, and a premium address. Contact Vicky on 021 170 1180 or Rocky on 021 683 383 today to arrange your private viewing before it's gone!

More About this Property

Property ID	6TJ16
Property Type	House
House Size	240 m2
Land Area	599 m2
Including	Toilets (3)
Licensed Real Estate Agents (REAA2008)	

Vicky Ward 021 170 1180

Licensed Salesperson | vicky@ljhsouth.co.nz

LJ Hooker Pokeno 09 298 4000

Southern Suburbs Realty Ltd

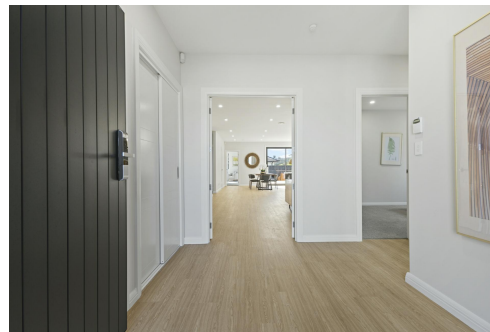
1/319 Great South Road, PAKAKURA NZ

pokeno.ljhooker.co.nz | pokeno@ljhsouth.co.nz



Disclaimer: All information contained therein is gathered from relevant third parties sources.

We cannot guarantee or give any warranty about the information provided. Interested parties must rely solely on their own enquiries.



LJ Hooker Pokeno

09 298 4000

Southern Suburbs Realty Ltd