



1/27 Rogan Crescent, Prairiewood

## For Sale: Charming Family Home in Prairiewood

A delightful 3-bedroom, 2.5-bathroom townhouse house nestled in the heart of Prairiewood.

This inviting property is perfect for families seeking comfort, style, and convenience. 1 secure garage space, providing ample storage and parking.

Step inside to discover a well-appointed interior that blends functionality with aesthetic appeal.


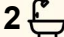

The open-plan living and dining area is perfect for entertaining, featuring tiled floors and ample natural light.

The living room is a cozy retreat, ideal for family gatherings or quiet evenings at home.

The kitchen is equipped with modern appliances and plenty of counter space, making meal preparation a breeze.

A versatile layout that allows for easy customization to suit your lifestyle.

All information contained therein is gathered from relevant third parties sources. We cannot guarantee or give any warranty about the information provided. Interested parties must rely solely on their own enquiries.

3  2  1 

### FOR SALE

Auction Sunday 30th Nov 2025 @ 11am  
On-Site

### AGENTS

Patrick Huynh  
0423 333 999  
patrick.huynh@ljhooker.com.au

Liliana Albino  
0413 816 528  
pm1.epgv@ljhooker.com.au

### AGENCY

LJ Hooker Edensor Park | Green Valley  
(02) 9823 8888



This home is conveniently located near local amenities, schools, parks, and public transport, making it an ideal choice for families and professionals alike.

Don't miss your chance to own this beautiful property! Join us for the auction on Sunday, 30th November 2025, at 11 am on-site.

Contact us today for more information or to arrange a private viewing.

Your dream home awaits at 1/27 Rogan Crescent, Prairiewood!

## MORE DETAILS

Property ID	CPJHUC
Property Type	House
Including	Ensuite
	Toilets (3)

### Patrick Huynh 0423 333 999

Principal / Licensee In Charge / Licensed Real Estate Agent |  
patrick.huynh@ljhooker.com.au

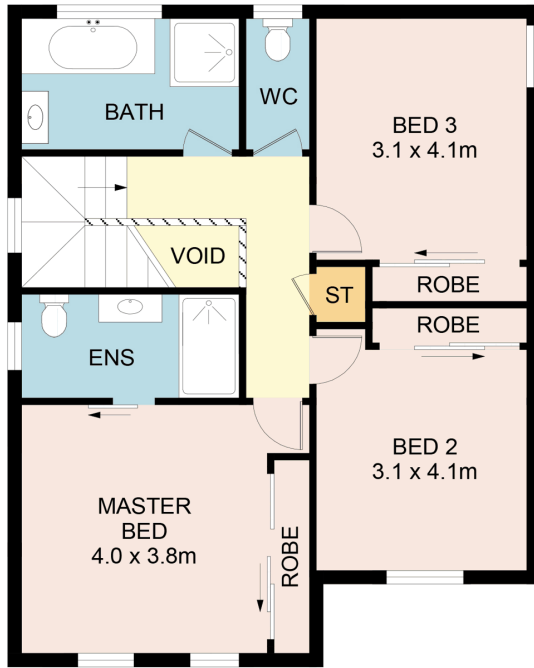
### Liliana Albino 0413 816 528

Leasing & Sales Executive | pm1.epgv@ljhooker.com.au

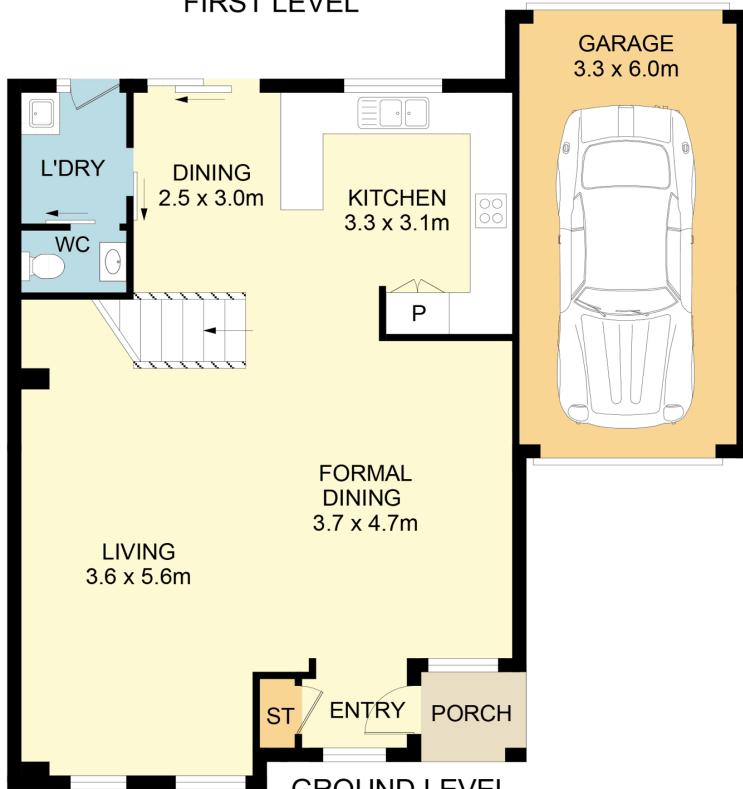
### LJ Hooker Edensor Park | Green Valley (02) 9823 8888

Shop 8, 207-215 Edensor Road, Edensor Park Plaza, EDENSOR  
PARK NSW 2176  
edensorpark.ljhooker.com.au | edensorpark@ljhooker.com.au

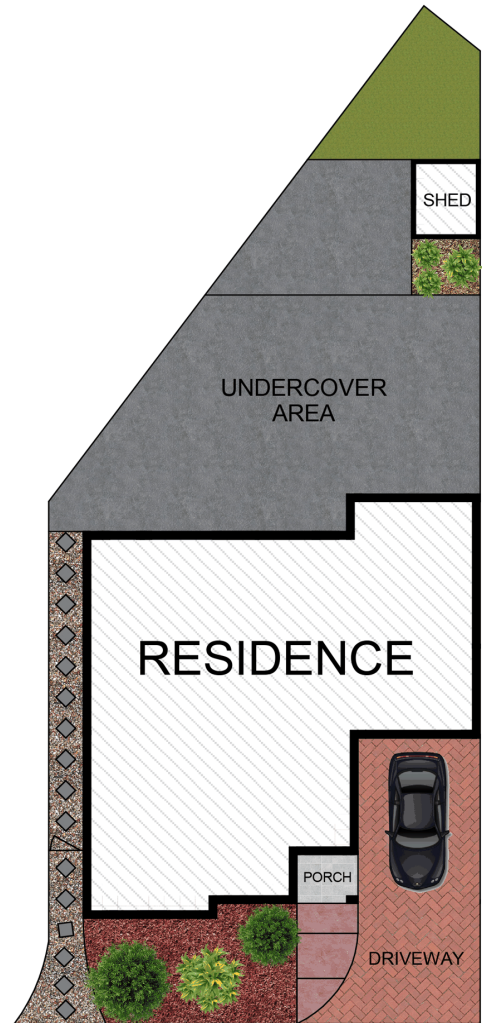




FIRST LEVEL



GROUND LEVEL



SITE PLAN  
(NOT TO SCALE)

## 1/27 Rogan Crescent, Prairiewood



Edensor Park | Green Valley

**DISCLAIMER:** No liability for the accuracy of details contained within our floor plans. All plans are drawn and also checked to the best of our ability, however information contained in our floor plans such as area calculations are approximate, and have not been surveyed or drawn to scale. Our floor plans are for representational purposes only and should be used as such. Do not attempt to refer to our floor plans for structural or detailed information.

All information contained therein is gathered from relevant third parties sources. We cannot guarantee or give any warranty about the information provided. Interested parties must rely solely on their own enquiries.

