



LJ Hooker



LJ Hooker



LJ Hooker



LJ Hooker

## Portland, 9 Park Street

### Your Next Renovation Project

Located in the village of Portland, is this clad residence offering a fantastic opportunity for renovators and investors looking for a creative outlet.

The floorplan consists of 2 bedrooms, eat-in kitchen, separate living area, basic bathroom and laundry.

Situated on a 1,012 square metre block with rear lane access to a single carport.

Only a short walk to Portland shops and showground.

2 

1 

1 

**For Sale**  
\$325,000

**View**  
[ljhooker.com.au/18MDF9X](http://ljhooker.com.au/18MDF9X)

**Contact**  
**Jamie Giokaris**  
0418 201 028  
[jgiokaris@ljhlithgow.com.au](mailto:jgiokaris@ljhlithgow.com.au)  
**Jamie Giokaris**  
0418 201 028  
[jgiokaris@ljhlithgow.com.au](mailto:jgiokaris@ljhlithgow.com.au)

 **LJ Hooker**

**LJ Hooker Lithgow**  
**(02) 6351 2548**

**Disclaimer:** All information contained therein is gathered from relevant third parties sources. We cannot guarantee or give any warranty about the information provided. Interested parties must rely solely on their own enquiries.

## More About this Property

<b>Property ID</b>	18MDF9X
<b>Property Type</b>	House
<b>Land Area</b>	1012 m2

### Jamie Giokaris 0418 201 028

Principal & Licensee | [jgiokaris@ljhlithgow.com.au](mailto:jgiokaris@ljhlithgow.com.au)

### Jamie Giokaris 0418 201 028

Principal & Licensee | [jgiokaris@ljhlithgow.com.au](mailto:jgiokaris@ljhlithgow.com.au)

### LJ Hooker Lithgow (02) 6351 2548

201 Main Street, LITHGOW NSW 2790

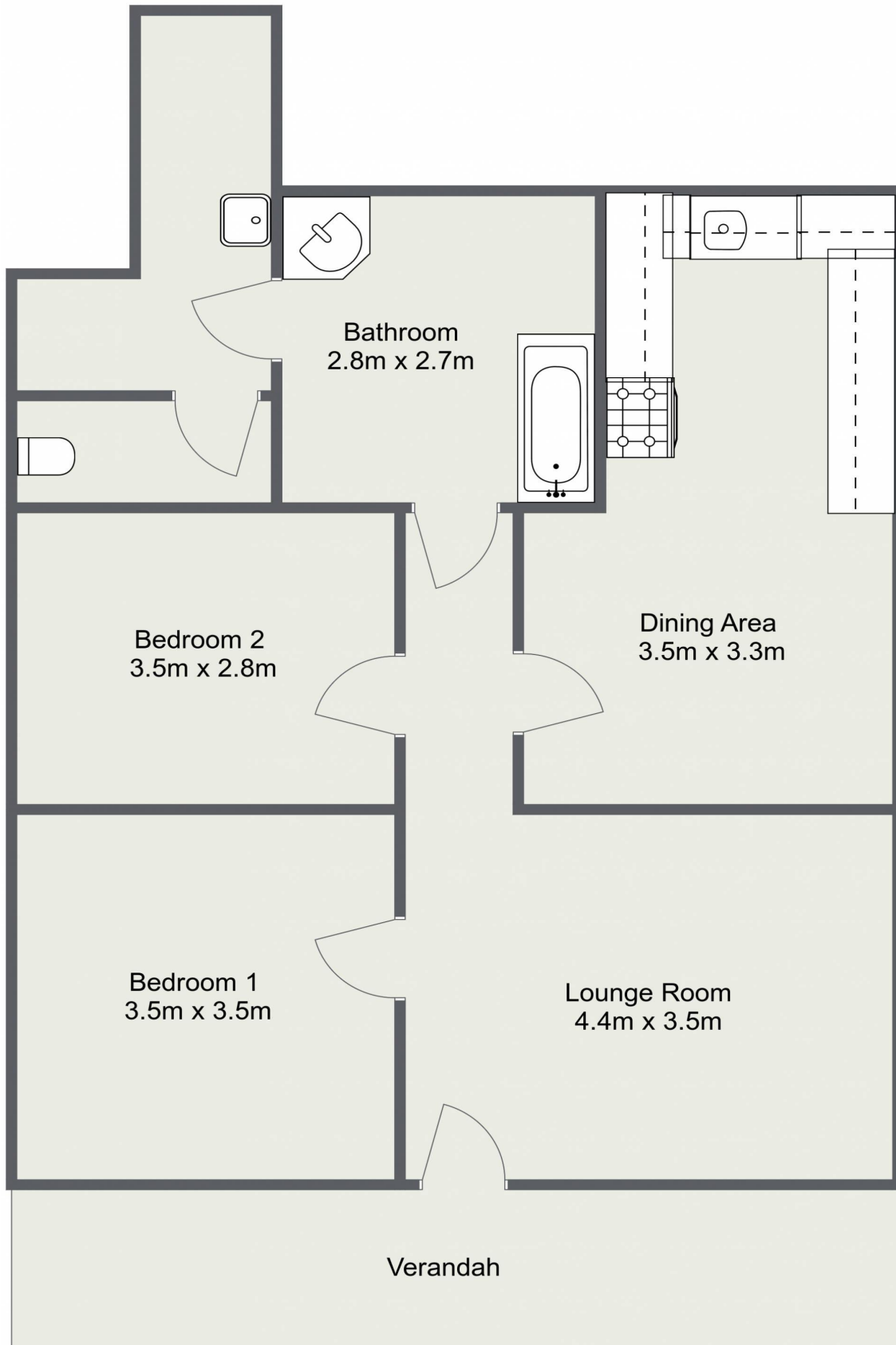
[lithgow.ljhooker.com.au](http://lithgow.ljhooker.com.au) | [enquiries@ljhlithgow.com.au](mailto:enquiries@ljhlithgow.com.au)



**Disclaimer:** All information contained therein is gathered from relevant third parties sources. We cannot guarantee or give any warranty about the information provided. Interested parties must rely solely on their own enquiries.

**LJ Hooker Lithgow**  
**(02) 6351 2548**

# 9 Park Street, Portland



Please Note: The above dimensions are approximate and are intended to be used as a guide only. Interested parties are urged to rely on their own enquiries.