



Portland, 48 Wallerawang Road

Expansive Home With Great Potential

Set on a 607 square metre block at the gateway to Portland Village, this solid home boasts generous dimensions and a versatile floor plan.

The home features 3 large bedrooms and a study, an original timber kitchen with electric stove, gas heater, and split system, formal lounge and dining rooms, and a neat bathroom.

There is a sunny front porch and a covered entertainment area for outdoor living, a single garage and workshop with attached carport accessed off the rear lane, and a bird aviary.

A wonderful property with excellent scope to add value.



For Sale
\$420,000

View
ljhooker.com.au/1HKSF9X

Contact
Blake Edgell
0434 579 426
bedgell@ljhlithgow.com.au

Blake Edgell
0434 579 426
bedgell@ljhlithgow.com.au



LJ Hooker Lithgow
(02) 6351 2548

Disclaimer: All information contained therein is gathered from relevant third parties sources. We cannot guarantee or give any warranty about the information provided. Interested parties must rely solely on their own enquiries.

More About this Property

Property ID	1HKSF9X
Property Type	House
House Size	198 m2
Land Area	607 m2

Blake Edgell 0434 579 426

Sales Agent | bedgell@ljhlithgow.com.au

Blake Edgell 0434 579 426

Sales Agent | bedgell@ljhlithgow.com.au

LJ Hooker Lithgow (02) 6351 2548

201 Main Street, LITHGOW NSW 2790

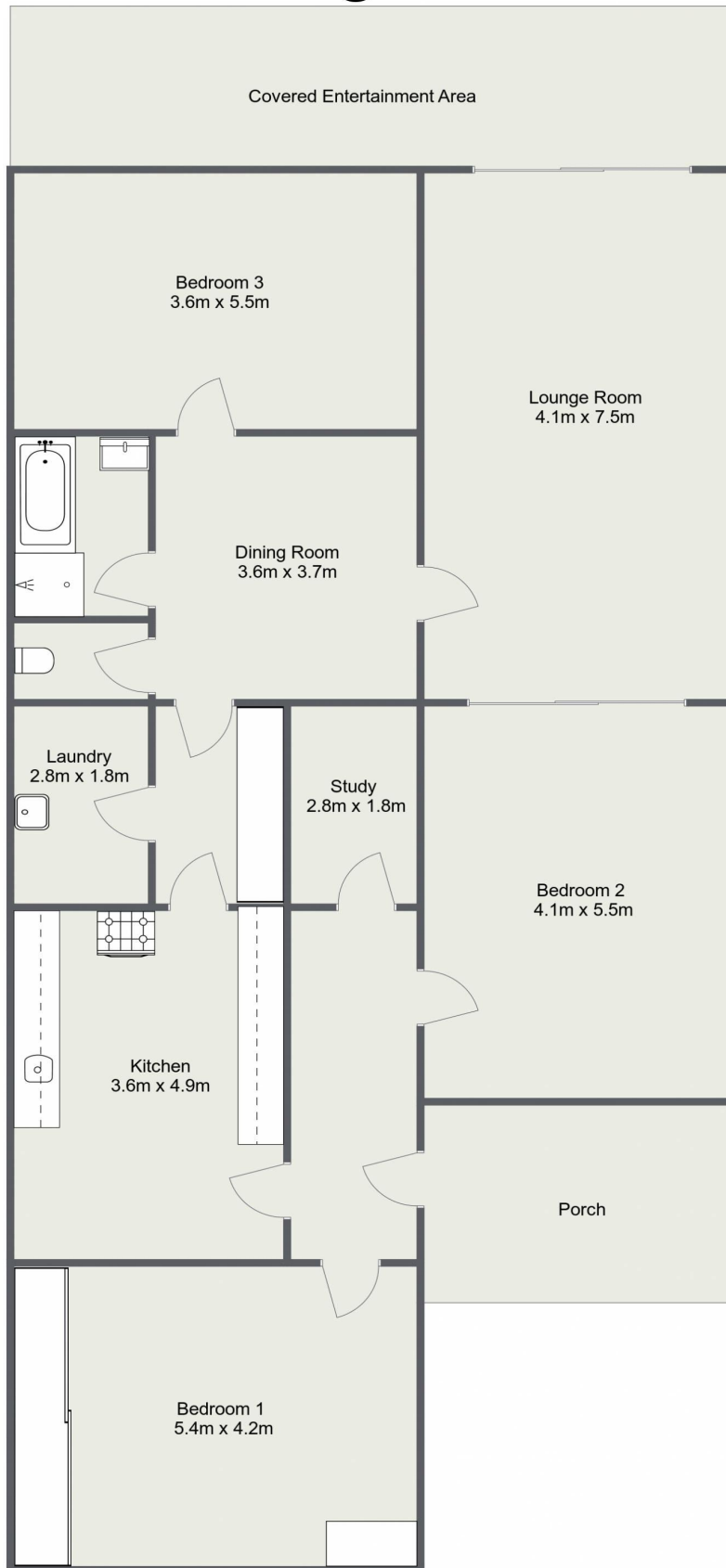
lithgow.ljhooker.com.au | enquiries@ljhlithgow.com.au



LJ Hooker Lithgow
(02) 6351 2548

Disclaimer: All information contained therein is gathered from relevant third parties sources. We cannot guarantee or give any warranty about the information provided. Interested parties must rely solely on their own enquiries.

48 Wallerawang Road, Portland



Please Note: The above dimensions are approximate and are intended to be used as a guide only. Interested parties are urged to rely on their own enquiries.