



10 Lime Street, Portland

Impressive, Fully Renovated Family Home

Don't miss the opportunity to secure this stunning, fully renovated home.

As soon as you step inside, you'll be captivated by the modern design and thoughtful detail and quality. The kitchen is sleek and modern with stainless steel appliances and is complimented by a near-new main bathroom and a luxurious ensuite featuring a spa bath and a spacious walk-in robe. Enjoy separate dining, living room and family room, ducted heating & cooling and a large back to grid solar energy system. The covered outdoor entertainment area will cater for all your family and friends.

The property also boasts an impressive upstairs studio, perfect for additional living space or a home office. This versatile area includes a large lounge/games room, kitchenette, and a sun-drenched balcony-ideal for relaxation after a long day. There is an awesome triple garage with access off the laneway.

All sitting on a 956 sqm block, opposite Kremer Park and located within walking distance to school and shops.

2 🚗 3 🚗 3 🚗

FOR SALE
\$695,000

AGENTS

Jamie Giokaris
0418 201 028
jgiokaris@ljlhithgow.com.au

Jamie Giokaris
0418 201 028
jgiokaris@ljlhithgow.com.au

AGENCY

LJ Hooker Lithgow
(02) 6351 2548

All information contained therein is gathered from relevant third parties sources.
We cannot guarantee or give any warranty about the information provided.
Interested parties must rely solely on their own enquiries.

 **LJ Hooker**

MORE DETAILS

Property ID 1EQVF9X
Property Type House
House Size 82 m2
Land Area 956.2 m2

Jamie Giokaris 0418 201 028

Principal | jgiokaris@ljhlithgow.com.au

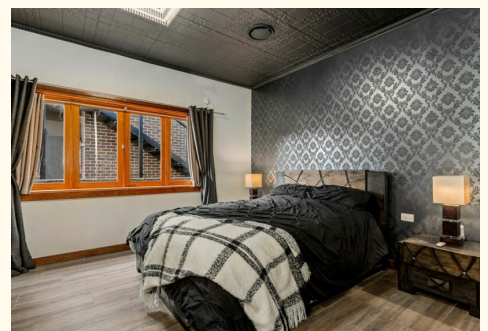
Jamie Giokaris 0418 201 028

Principal | jgiokaris@ljhlithgow.com.au

LJ Hooker Lithgow (02) 6351 2548

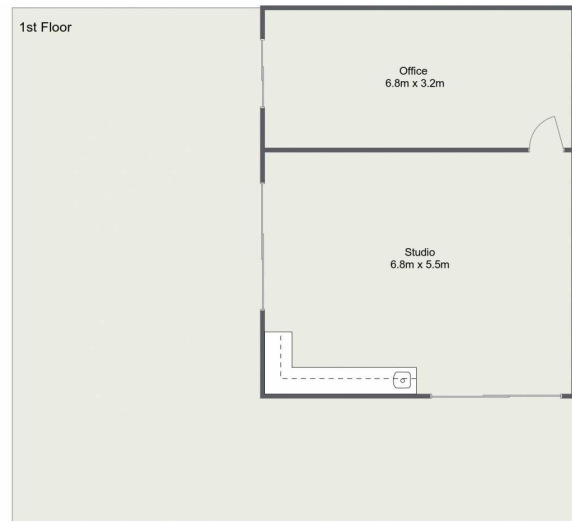
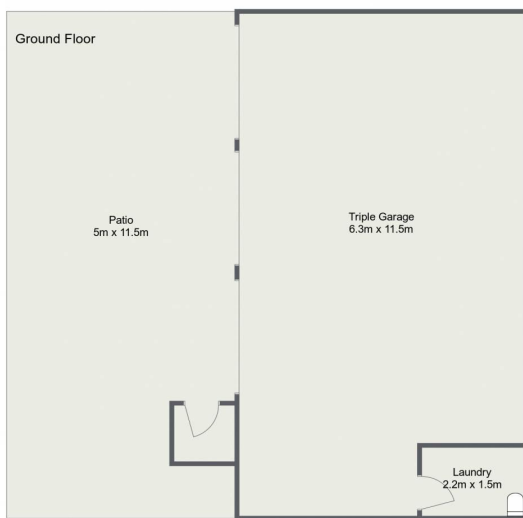
201 Main Street, LITHGOW NSW 2790

lithgow.ljhooker.com.au | enquiries@ljhlithgow.com.au



All information contained therein is gathered from relevant third parties sources.
We cannot guarantee or give any warranty about the information provided.
Interested parties must rely solely on their own enquiries.

10 Lime Street, Portland



Please Note: The above dimensions are approximate and are intended to be used as a guide only.
Interested parties are urged to rely on their own enquiries.