



15 Lime Street, Portland

5 🏠 2 🚿 2 🚗

Double Income Duplex on 1012 square metres

FOR SALE
\$525,000

VIEW
Sat 20th Jun @ 2:00PM - 2:30PM

AGENTS
Jamie Giokaris
0418 201 028
jgiokaris@ljlithgow.com.au

AGENCY
LJ Hooker Lithgow
(02) 6351 2548

An ideal double income investment in the quiet village of Portland.

A clad duplex design consisting of a 2 bedroom unit and a 3 bedroom unit. Both residences have a modern and tidy interior with a single garage on one and a single carport on the other.

Weekly rentals returns of \$310 and \$290 with reliable tenants, giving a combined income of \$600 per week.

A total land area of 1012 square metres with rear land access and just 500 metres to Portland shopping strip and Portland Central School.

- Mt Victoria Pass is temporarily closed, however Lithgow is still accessible from Sydney and the Blue Mountains via the Darling Causeway diversion from the Great Western Highway and alternatively the Bells Line of Road.

Allow an extra 20 minutes travel time.

All information contained therein is gathered from relevant third parties sources. We cannot guarantee or give any warranty about the information provided. Interested parties must rely solely on their own enquiries.

 **LJ Hooker**

MORE DETAILS

Property ID 1JGUF9X
Property Type DuplexSemi-detached
Land Area 1012 m2

Jamie Giokaris 0418 201 028

Principal | jgiokaris@ljhlithgow.com.au

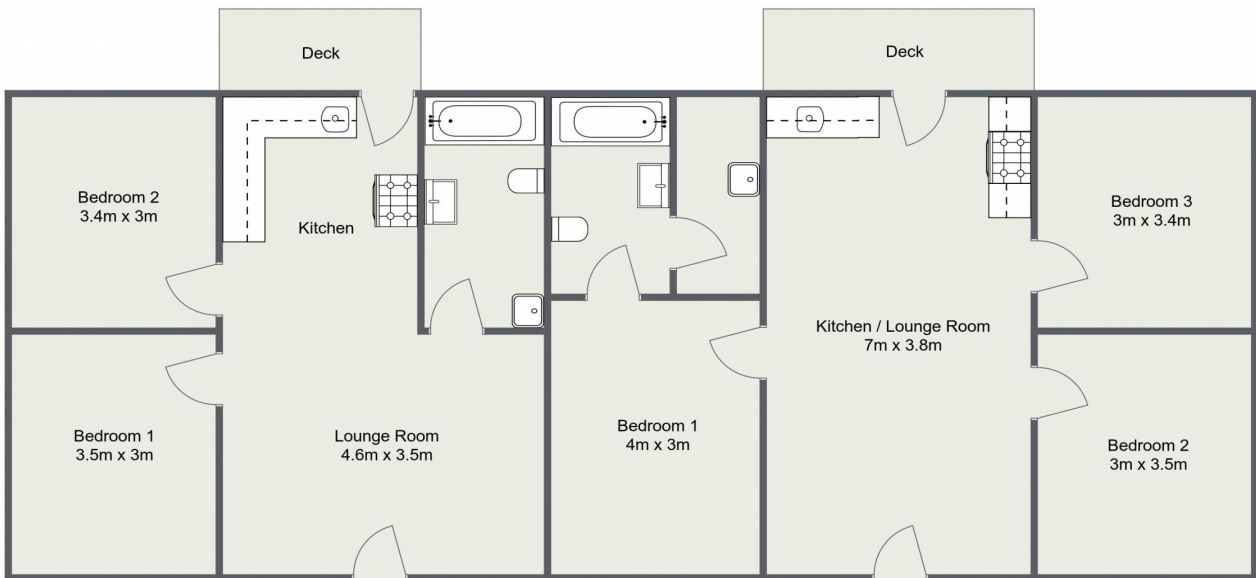
LJ Hooker Lithgow (02) 6351 2548

201 Main Street, LITHGOW NSW 2790
lithgow.ljhooker.com.au | enquiries@ljhlithgow.com.au



All information contained therein is gathered from relevant third parties sources.
We cannot guarantee or give any warranty about the information provided.
Interested parties must rely solely on their own enquiries.

15 Lime Street, Portland



Please Note: The above dimensions are approximate and are intended to be used as a guide only.
Interested parties are urged to rely on their own enquiries.