



## Port Noarlunga South, 39 Aldam Road

Under contract



### For Sale

\$750,000 - \$800,000

### View

[ljhooker.com.au/WP9FDG](http://ljhooker.com.au/WP9FDG)

### Contact

#### Troy Tyndall

0401 661 997

[troy.tyndall@ljhadelaidemetro.com.au](mailto:troy.tyndall@ljhadelaidemetro.com.au)

#### Luke Mitchell

0411 703 055

[luke.mitchell@ljhadelaidemetro.com.au](mailto:luke.mitchell@ljhadelaidemetro.com.au)

Tucked away in the heart of one of Adelaide's most beloved coastal communities, this home perfectly balances lifestyle, comfort and opportunity. Whether you're a first home buyer looking to enter the market, a growing family searching for space to spread out, or a savvy investor that recognises potential, this property ticks all the right boxes.

Set on a generous 750m2 approx. allotment, this 70's home has been lovingly maintained all whilst still retaining its original character. Stepping inside, you'll immediately notice the natural light that floods the spacious living areas.

The kitchen offers ample bench space and a gas cooktop. Separate dining area, perfect for family dinners, weekend brunches or entertaining guests with ease.

The home offers three bedrooms, with the master and second bedroom both featuring built-in robes, providing practical storage solutions. The central bathroom features



**LJ Hooker Glynde**  
(08) 8336 3899

**Disclaimer:** All information contained therein is gathered from relevant third parties sources. We cannot guarantee or give any warranty about the information provided. Interested parties must rely solely on their own enquiries.

separate tub/ shower and adjoining toilet, separate laundry and split-system air conditioning in the living area ensure everyday comfort and functionality.

But it's what's outside that truly sets this property apart.

Ideal for young families, pet lovers, or green thumbs dreaming of their own veggie patch. There's plenty of space for a future extension, a pool (STPC), or simply enjoying BBQs and lazy afternoons on the lawn. A sizable shed provides additional storage or the perfect workspace for tradies or car lovers.

How's the location? It doesn't get much better than this!

Only a 5 minute stroll from the pristine sands of Port Noarlunga Beach, thriving cafe culture, enjoy morning swims, coastal walks or simply soaking up the sunset just down the road. All your daily needs are catered to with nearby shops, local schools, parks and public transport links, ensuring an easy commute into the city or around the southern suburbs.

Key Features:

750m2 approx. allotment with wide street frontage  
Three bedrooms, two with built-in robes  
Light filled living areas  
Split-system air conditioning  
Vehicle access to rear yard with lock up shed  
Large backyard with ample opportunity  
Minutes from the beach, shops, schools & transport

Whether you choose to move straight in, renovate, or invest, this is a golden opportunity in a high growth coastal pocket that continues to thrive.

Don't miss your chance to secure a slice coastal peace, where laid-back living meets everyday convenience.

Purchasing this property as an investment? Talk with Kirsty Clark from our PM team and see why our Property Management department is #1 amongst all the LJ Hooker offices Worldwide.

\*\* All information provided has been obtained from sources we believe to be accurate, however, we cannot guarantee the information is accurate and we accept no liability for any errors or omissions (including but not limited to a property's land size, floor plans and size, building age and condition). Interested parties should make their own enquiries and obtain their own legal advice.

RLA 61345 RLA 282965 RLA 231015



**LJ Hooker Glynde**  
**(08) 8336 3899**

**Disclaimer:** All information contained therein is gathered from relevant third parties sources. We cannot guarantee or give any warranty about the information provided. Interested parties must rely solely on their own enquiries.



## More About this Property

Property ID	WP9FDG
Property Type	House
Including	Toilets (1)

### Troy Tyndall 0401 661 997

Sales Mentor/Coach & Auctioneer | [troy.tyndall@ljhadelaidemetro.com.au](mailto:troy.tyndall@ljhadelaidemetro.com.au)

### Luke Mitchell 0411 703 055

Sales Representative | [luke.mitchell@ljhadelaidemetro.com.au](mailto:luke.mitchell@ljhadelaidemetro.com.au)

### LJ Hooker Glynde (08) 8336 3899

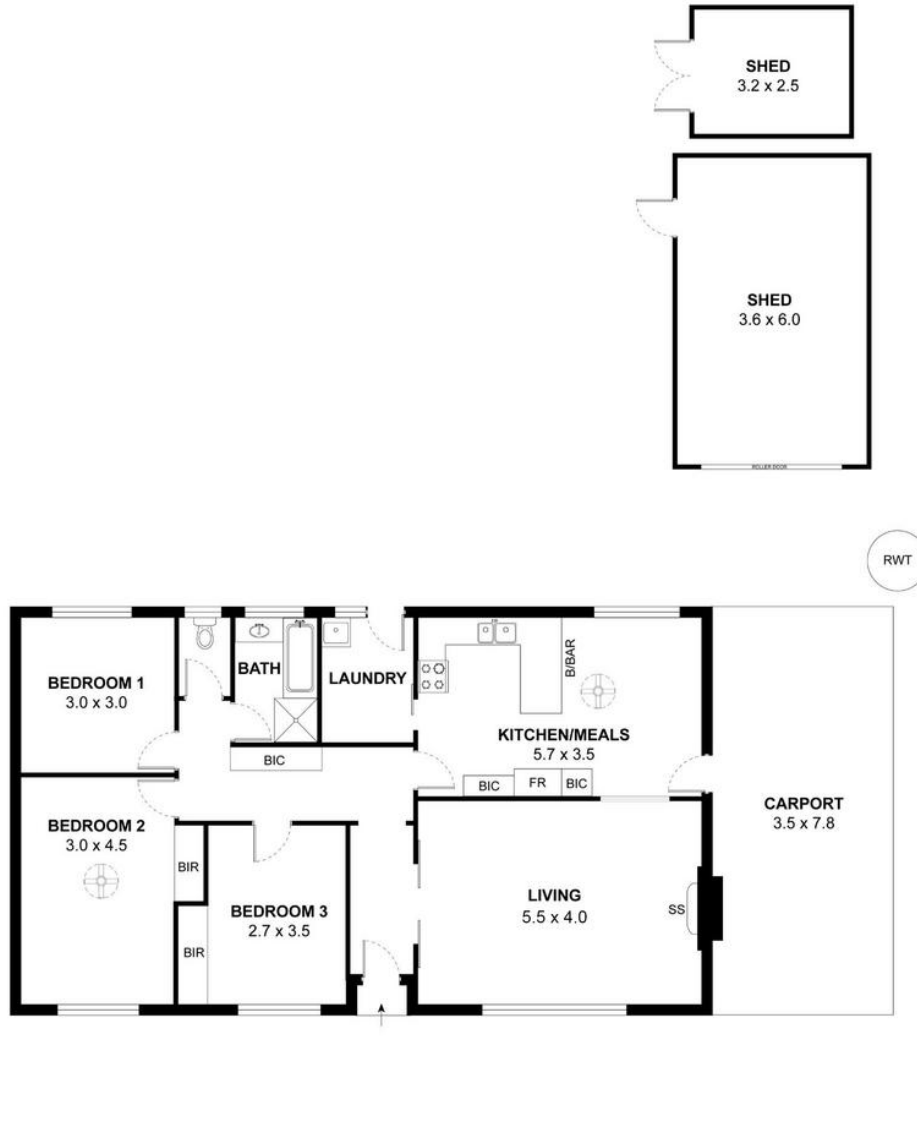
2a Portrush Road, PAYNEHAM SA 5070

[glynde.ljhooker.com.au](mailto:glynde.ljhooker.com.au) | [stpeters@ljhadelaidemetro.com.au](mailto:stpeters@ljhadelaidemetro.com.au)



**Disclaimer:** All information contained therein is gathered from relevant third parties sources. We cannot guarantee or give any warranty about the information provided. Interested parties must rely solely on their own enquiries.

**LJ Hooker Glynde**  
**(08) 8336 3899**



### 39 Aldam Road, Port Noarlunga South, SA 5167

**Disclaimer:** The information & figures obtained within this document has been compiled from information provided by vendor & sources that we believe are reliable. No warranty is given to their accuracy & all figures are subject to change without notice.