



9 Meka Court, Pooraka

A Solid Foundation with Style

Auction Location: 9 Meka Court, Pooraka SA 5095

Set on a generous 720sqm allotment with an impressive 26-metre frontage, this neat and tidy solid brick home constructed in 1965 presents an outstanding opportunity in the heart of Pooraka.

Well maintained and full of charm, this home is perfectly suited to first-home buyers, young families, growing families or savvy investors seeking space and comfort.

Step inside and you are immediately welcomed by an abundance of natural light, creating a bright and inviting atmosphere throughout the home. The bedrooms are thoughtfully positioned offering privacy and separation from the main living areas. At the heart of the home sits the central kitchen, perfectly positioned to overlook the outdoor entertaining area, making it ideal for everyday living and effortless entertaining while keeping an eye on family and guests.

Key Features

- Three well-proportioned bedrooms
- Solid brick construction for lasting durability
- Beautiful hardwood flooring throughout
- Reverse cycle heating and cooling for year-round comfort

3 1 1

AUCTION

Sat 7th Feb @ 12:00PM

VIEW

Sat 31st Jan @ 11:30AM - 12:00PM

AGENTS

Donna Staines
0456 844 103
donnas@ljhsales.com.au

Ashley Palazzo
0414 347 884
ashleyp@ljhsales.com.au

AGENCY

LJ Hooker Property Specialists
(08) 8289 6660

All information contained therein is gathered from relevant third parties sources.
We cannot guarantee or give any warranty about the information provided.
Interested parties must rely solely on their own enquiries.



- Electric roller shutters providing added security and climate control
- Practical and functional floorplan with a warm, welcoming feel

Step outside and you'll discover an inviting outdoor entertaining area, complete with a timber deck, pitched pergola and ceiling fan, ideal for hosting family gatherings, weekend barbecues or relaxed evenings with friends. An expansive, fully powered and concreted shed providing outstanding space for storage, a workshop or the ultimate setup for tradies, hobbyists or those needing room for tools, toys, and projects.

Location is key and this home delivers. Positioned just 13km approx. from the Adelaide CBD, with easy access to the Mawson Lakes Shopping Complex and only a short drive to Ingle Farm Shopping Centre and Tea Tree Plaza, everything you need is within reach!

All information provided has been obtained from sources we believe to be accurate, however, we cannot guarantee the information is accurate and we accept no liability for any errors or omissions (including but not limited to a property's land size, floor plans and size, building age and condition). Interested parties should make their own enquiries and obtain their own legal and financial advice. Should this property be scheduled for auction, the Vendor's Statement may be inspected at our LJ Hooker Property Specialists Real Estate office for 3 consecutive business days immediately preceding the auction and at the auction for 30 minutes before it starts.
RLA 208516

MORE DETAILS

Property ID	2CVGGJU
Property Type	House
House Size	103 m2
Land Area	720 m2

Donna Staines 0456 844 103

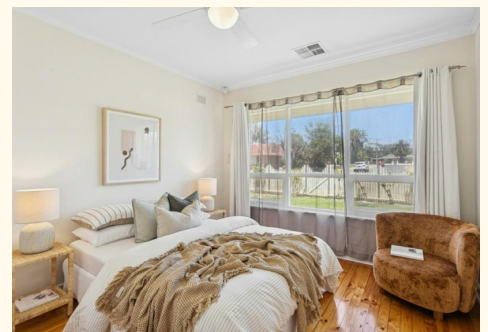
Sales Specialist | donnas@ljhsales.com.au

Ashley Palazzo 0414 347 884

Sales Specialist | ashleyp@ljhsales.com.au

LJ Hooker Property Specialists (08) 8289 6660

Shop 2, 1007 North East Road, RIDGEHAVEN SA 5097
propertyspecialists.ljhooker.com.au | info@ljhsupport.com.au





Scale in metres. This drawing is for illustration purposes only. All measurements are approximate and details intended to be relied upon should be independently verified.

Produced by **The Fotobase Group**