



Pokeno, 8 Bankhall Lane

Discover The Epitome Of Luxurious Living

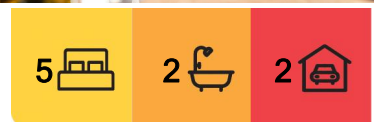
Discover the epitome of luxurious living in Pokeno! This magnificent 237m² 5 bedroom residence offers a harmonious blend of modern design and natural beauty, with breathtaking views overlooking a serene reserve offering space and privacy.

Step onto the elegant outside portico area, where you can unwind and entertain while enjoying the splendid vistas. Motorized blinds provide both shade and privacy, creating the perfect atmosphere for any occasion.

In the heart of this home lies a colossal Smeg Victoria 110cm cooker and leads into a huge well-appointed scullery that's truly a chef's dream with ample storage and preparation space. Whether you're hosting a gourmet dinner or a casual family meal, this scullery ensures that your culinary adventures are a



Disclaimer: All information contained therein is gathered from relevant third parties sources. We cannot guarantee or give any warranty about the information provided. Interested parties must rely solely on their own enquiries.



For Sale
\$1,295,000

View
ljhooker.co.nz/8R4HFY

Contact
Gary Capper
021 550 707
gcapper.pukekohe@ljhooker.co.nz

LJ Hooker Pukekohe
(09) 239 1356
Realty 2000 Ltd

breeze with the inclusion of a central vac floor mounted vacuum dustbin.

Not only does this home provide comfort with a 8000kw heat pump, and Hex ventilation system but it also embraces sustainability via a wood burner with wetback for heating hot water and a 13-panel solar power system to harness the sun's energy, reducing your carbon footprint while saving on energy costs.

A walk-through laundry room connects to the carpeted garage, which features pull-down attic stairs for extra storage. Beyond this, a low-maintenance, fully fenced garden awaits, boasting a gated entrance and two spacious garden sheds equipped with electricity for convenience.

Experience the tranquillity of Pokeno living, with easy access to local amenities and nearby attractions. Don't miss out on this exceptional opportunity to make this house, with its stunning features and reserve views, your forever home!

LIM report available on request or call Gary on 021 5507 to arrange a viewing or further information.

More About this Property

Property ID 8R4HFY

Property Type House

House Size 237 m²

Land Area 770 m²

Licensed Real Estate Agents (REAA2008)

Gary Capper

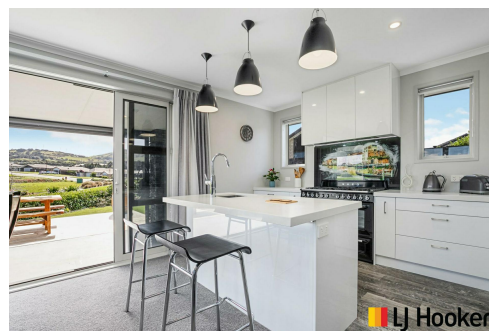
Sales & Marketing Consultant | gcapper.pukekohe@ljhooker.co.nz

LJ Hooker Pukekohe (09) 239 1356

Realty 2000 Ltd

7 Paerata Road, PUKEKOHE NZ 2120

pukekohe.ljhooker.co.nz | pukekohe@ljhooker.co.nz



Disclaimer: All information contained therein is gathered from relevant third parties sources. We cannot guarantee or give any warranty about the information provided. Interested parties must rely solely on their own enquiries.

LJ Hooker Pukekohe
(09) 239 1356

Realty 2000 Ltd