



16 Tribeca Drive, Point Cook

Low-Maintenance Living in the Heart of Soho Village

The Property

Welcome to 16 Tribeca Drive, Point Cook. Nestled in the highly sought-after Alamanda Estate, this immaculately presented home spans across three levels, offering the perfect combination of modern living and comfort. With three spacious bedrooms, two bathrooms, and a single-car garage with internal access, this home caters to first-home buyers and savvy investors alike. Ideally located just moments from local schools, the Soho Village shopping precinct, and beautiful parklands, this property provides the ultimate in convenience and lifestyle, plus, with no body corporate fees, it's a truly rare find!

The Point of Difference

- The open plan living area is thoughtfully designed for modern living, offering a split system and an abundance of natural light. Sliding doors open to a balcony, creating a seamless connection between indoor and outdoor spaces. The integrated study nook adds a practical touch, ideal for working or studying from home.
- The kitchen is a true highlight, featuring stainless steel appliances, stone benchtops, a double sink, and a dishwasher. It flows effortlessly into the adjoining meals area, creating the perfect space for casual dining and entertaining.

3 2 1

FOR SALE

\$595,000 - \$625,000

VIEW

Sat 21st Feb @ 11:30AM - 12:00PM

AGENTS

Natalie Newdick
0451 992 994
natalie.newdick@ljhooker.com.au

Mac Naidoo
0452 516 565
mac.naidoo@ljhooker.com.au

AGENCY

LJ Hooker Point Cook
(03) 9975 7080

All information contained therein is gathered from relevant third parties sources.
We cannot guarantee or give any warranty about the information provided.
Interested parties must rely solely on their own enquiries.



- The master bedroom, located on the ground floor, offers privacy and comfort with built-in robes, a ceiling fan, a private courtyard, and a sleek ensuite, making it a peaceful retreat.
- Upstairs, two additional spacious bedrooms offer built-in robes, ceiling fans, and easy access to the central bathroom.
- A versatile upstairs retreat provides the ideal space for a relaxation zone, playroom, or a home office to suit your needs.
- Additional features include a powder room on level two, split system air conditioning, downlights, floating floors, low-maintenance living, and modern finishes throughout.

The Point of Interest

Situated in the heart of vibrant Soho Village, this home offers an exceptional lifestyle with cafes, restaurants, an IGA supermarket, medical facilities, and everyday conveniences just steps away. Zoned to Carranballac P-9 College and close to Sparrow Early Learning Alamanda, it's also moments from major shopping centres like Sanctuary Lakes Shopping Centre and Point Cook Town Centre. Surrounded by parklands such as Alamanda Oval and Point Cook Coastal Park, and with easy access to public transport, including Williams Landing station, this is a prime opportunity to enjoy modern, low maintenance living in a sought-after location.

Note. All stated dimensions are approximate only. Particulars given are for general information only and do not constitute any representation on the part of the vendor or agent. Any school zoning stated based on www.findmyschool.vic.gov.au as of 13/02/2026.

MORE DETAILS

Property ID 2J0CHGH
Property Type Townhouse

Natalie Newdick 0451 992 994

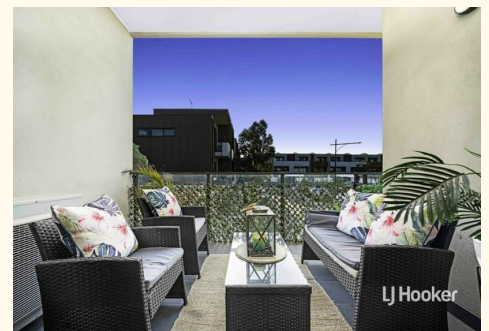
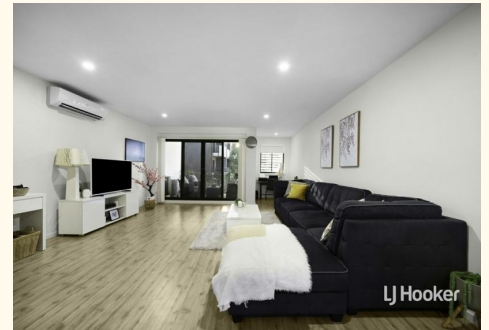
Sales Executive | natalie.newdick@ljhooker.com.au

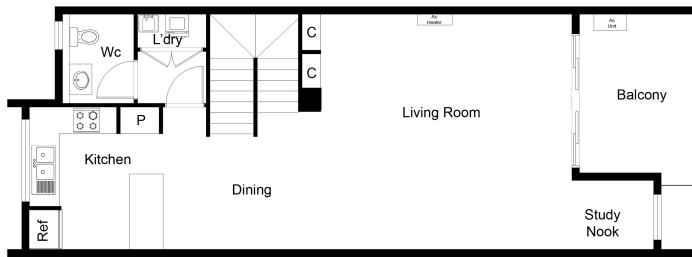
Mac Naidoo 0452 516 565

Sales Executive | mac.naidoo@ljhooker.com.au

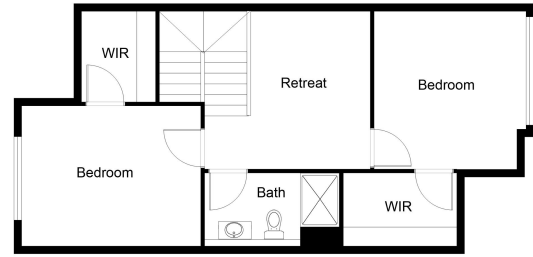
LJ Hooker Point Cook (03) 9975 7080

Shop 211, 4 Main Street, POINT COOK VIC 3030
pointcook.ljhooker.com.au | pointcook@ljhooker.com.au

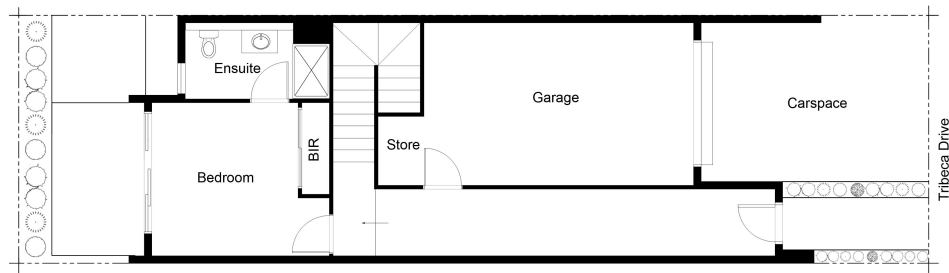




FIRST FLOOR PLAN



SECOND FLOOR PLAN



GROUND FLOOR ON SITE PLAN

This floor plan including furniture, fixture measurements and dimensions are approximate and for illustrative purposes only.
BoxBrownie.com gives no guarantee, warranty or representation as to the accuracy and layout.
All enquiries must be directed to the agent, vendor or party representing this floor plan.

