

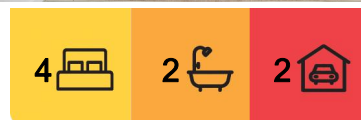
Point Cook, 25 Squadron Road

Impeccable Family Home in Saltwater Coast Estate - Three Schools in Walking Distance!

LJ Hooker Property Point proudly presents 25 Squadron Road, Point Cook. Intentional in design and impeccable in presentation, this modern residence offers exceptional living for families, professionals and investors alike. With open plan family and meals spaces, four bedrooms, two bathrooms and secure parking for two vehicles, this low maintenance property is within walking distance of the expansive Point Cook Coastal Park and is minutes from local shops, schools and transport options.

-Bright and airy, this property offers an abundance of space, its free-flowing floorplan including open plan living and meals spaces with neutral hues and practical tiling providing continuity throughout.

-The beautifully appointed kitchen will impress the home chef, boasting glossy stone countertops, ample storage space and a breakfast bar for casual meals. Quality appliances include a 900mm gas cooktop, under bench oven and dishwasher, while the



For Sale

\$705,000 - \$735,000

View

ljhooker.com.au/2EPXGHG

Contact

Rebecca Zhang

0433 229 168

rebecca.zhang@ljhooker.com.au

Anu Sharma

0448 218 455

anu.sharma@ljhooker.com.au



LJ Hooker Point Cook
(03) 9975 7080

Disclaimer: All information contained therein is gathered from relevant third parties sources. We cannot guarantee or give any warranty about the information provided. Interested parties must rely solely on their own enquiries.

splash back is adorned with stylish subway tiles.

-Designed with families in mind, this property includes four generous bedrooms, the master at the front of the home, boasting a walk-in-robe and private ensuite. The remaining bedrooms are well-separated, each with built-in robes and shared access to the family bathroom and separate toilet.

-Positioned upon a low maintenance 400sqm (approx.) block, this single-storey residence offers a contemporary frontage and tidy gardens, plus a fully fenced back yard with covered alfresco, perfect for entertaining family and friends.

-Additional appointments include a double remote-control garage with internal access, a separate laundry, linen storage, ducted heating, evaporative cooling, high ceilings and quality roller blinds throughout.

Nestled within the sublime Saltwater Coast Estate, this property offers superb proximity to Point Cook Coastal Park, Saltwater Reserve, Point Cook Soccer Club and the Seasons 5 Spa Retreat. Local shopping and entertainment precincts include Sanctuary Lakes Shopping Centre, Sanctuary Lakes Hotel and Sanctuary Lakes Golf Club, while public transport options include Williams Landing Station. For students, this property is within walking distance of Saltwater P-9 College and Homestead Senior Secondary College, with St Mary of the Cross Catholic Primary School also nearby.

Note. All stated dimensions are approximate only. Particulars given are for general information only and do not constitute any representation on the part of the vendor or agent. Any school zoning stated based is on www.findmyschool.vic.gov.au as of 29/2/24.

More About this Property

Property ID	2EPXHGH
Property Type	House
Land Area	400 m ²
Including	Toilets (2)

Rebecca Zhang 0433 229 168

Licensed Estate Agent | Auctioneer | rebecca.zhang@ljhooker.com.au

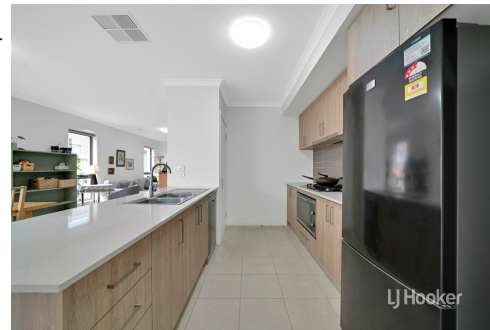
Anu Sharma 0448 218 455

Sales Consultant | anu.sharma@ljhooker.com.au

LJ Hooker Point Cook (03) 9975 7080

Shop 211, 4 Main Street, POINT COOK VIC 3030

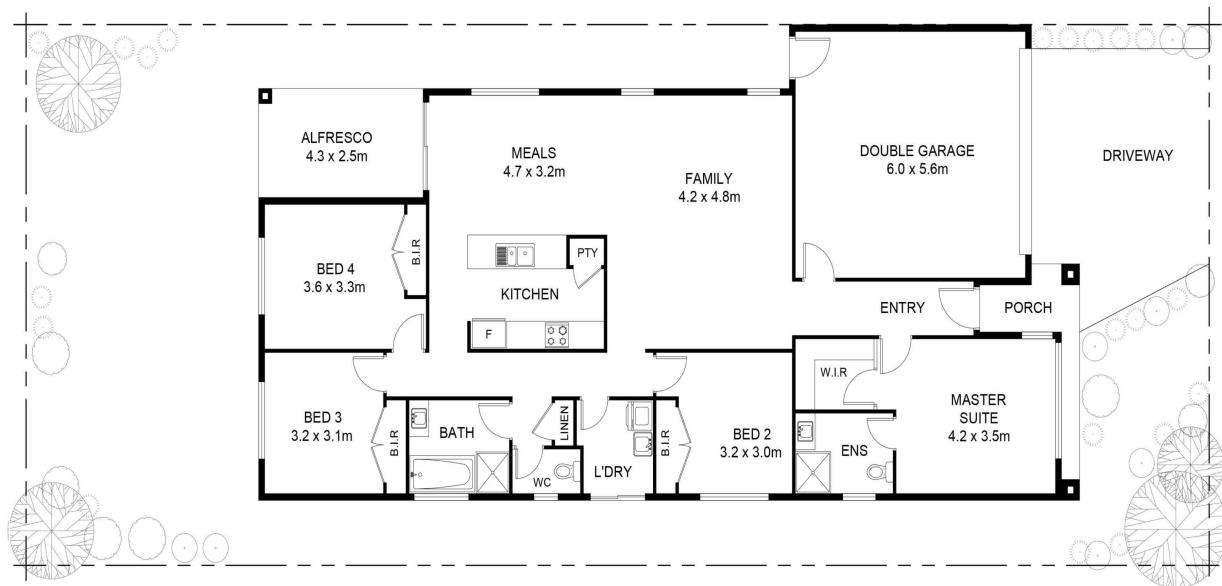
pointcook.ljhooker.com.au | pointcook@ljhooker.com.au



Disclaimer: All information contained therein is gathered from relevant third parties sources.

We cannot guarantee or give any warranty about the information provided. Interested parties must rely solely on their own enquiries.

LJ Hooker Point Cook
(03) 9975 7080



FLOOR & SITE PLAN

This floor plan including furniture, fixture measurements and dimensions are approximate and for illustrative purposes only. BoxBrownie.com gives no guarantee, warranty or representation as to the accuracy and layout. All enquiries must be directed to the agent, vendor or party representing this floor plan.

