

1/41 Hyde Park Terrace, Point Cook

Space, Style and Lifestyle in One Complete Package

The Property

Welcome to 1/41 Hyde Park Terrace, Point Cook. From the moment you step inside, you're welcomed by generous living areas, a well-designed layout and spaces that invite relaxed, comfortable living. Showcasing open-plan living, flexible living zones and low-maintenance surrounds, the home combines everyday comfort with modern appeal. Generous proportions, quality inclusions and an easy-flowing floorplan create a welcoming environment ideal for relaxed living and entertaining. Perfectly positioned within the popular Newminster Estate, this residence provides a lifestyle of convenience close to parks, schools, shopping precincts and public transport.

The Point of Difference

- Light-filled open-plan living, dining and kitchen zone complemented by an additional front lounge, creating beautifully connected spaces for everyday living and entertaining.
- Contemporary kitchen featuring stainless steel oven, gas cooktop and rangehood, tiled splashback, generous cabinetry, ample bench space for effortless meal preparation, and a dishwasher.
- Comprising three generously sized upstairs bedrooms, highlighted by a main suite with walk-in robe, private ensuite and balcony,

3 2 2

AUCTION

Sat 28th Feb @ 12:00PM

VIEW

Sat 21st Feb @ 1:45PM - 2:15PM

AGENTS

Patrick Bowen
0414 643 705
patrick.bowen@ljhooker.com.au

Natalie Newdick
0451 992 994
natalie.newdick@ljhooker.com.au

AGENCY

LJ Hooker Point Cook
(03) 9975 7080

All information contained therein is gathered from relevant third parties sources.
We cannot guarantee or give any warranty about the information provided.
Interested parties must rely solely on their own enquiries.



- complemented by easy access to the modern main bathroom.
- Low-maintenance rear yard with undercover patio providing a private outdoor setting for relaxed entertaining or quiet enjoyment.
- Additional highlights include ducted heating, split-system air conditioning, downstairs powder room, quality laminate flooring, and a double garage with internal access.

The Point of Interest

Perfectly positioned within the highly regarded Newminster Estate, this home enjoys a family-friendly setting surrounded by leafy streetscapes, parklands and a welcoming community. Positioned close to Point Cook Town Centre and Sanctuary Lakes Shopping Centre, residents enjoy easy access to supermarkets, cafés, restaurants and everyday essentials. Scenic walking trails, wetlands and the Point Cook Coastal Park provide excellent outdoor recreation, while nearby playgrounds and sporting reserves cater to all ages. Convenient access to public transport and major road connections, including the Princes Freeway, ensures effortless commuting. Families will appreciate proximity to quality schools and childcare, creating a well-connected and highly desirable address.

Note. All stated dimensions are approximate only. Particulars given are for general information only and do not constitute any representation on the part of the vendor or agent. Any school zoning stated based on www.findmyschool.vic.gov.au as of 28/01/26.

MORE DETAILS

Property ID	2HXDHGH
Property Type	House
Including	Ensuite

Patrick Bowen 0414 643 705

Licensed Estate Agent, Auctioneer | patrick.bowen@ljhooker.com.au

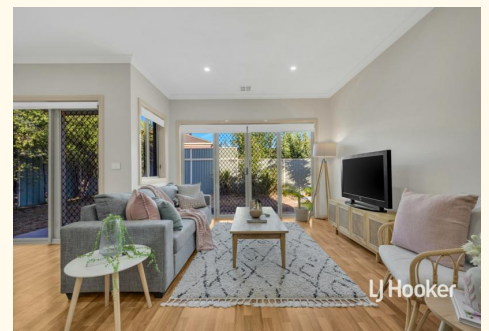
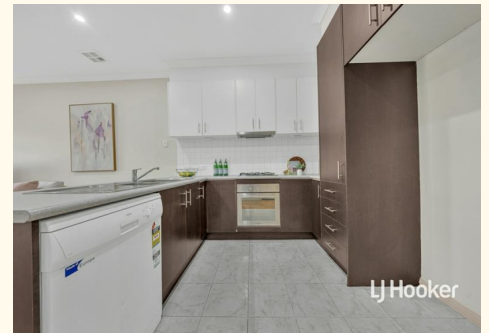
Natalie Newdick 0451 992 994

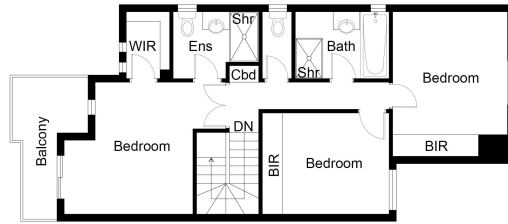
Sales Executive | natalie.newdick@ljhooker.com.au

LJ Hooker Point Cook (03) 9975 7080

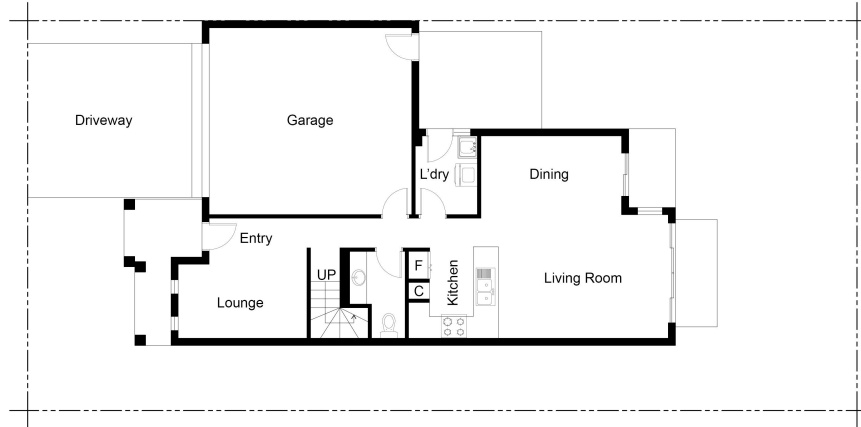
Shop 211, 4 Main Street, POINT COOK VIC 3030

pointcook.ljhooker.com.au | pointcook@ljhooker.com.au





FIRST FLOOR PLAN



GROUND FLOOR PLAN ON SITE PLAN

This floor plan including furniture, fixture measurements and dimensions are approximate and for illustrative purposes only.
BoxBrownie.com gives no guarantee, warranty or representation as to the accuracy and layout.
All enquiries must be directed to the agent, vendor or party representing this floor plan.

