



Point Chevalier, 16 Harbour View Road

Point Chevalier Beachfront Original

This rare absolute beachfront estate stands as one of the most iconic landholdings in the city of Auckland, sitting in a privately positioned pocket nestled on the edge of the sands, shoreside in Pt Chevalier.

Occupying arguably the most desirable beachside position not just in this sought-after urban seaside village, but in all of Auckland, it stands as a testament to a time of design excellence.

This exceptional residence is offered to the market reluctantly due to the current owner having a change of direction.

This outstanding property sits right on the beach with riparian rights and its own boat ramp.

With its beachside surrounds and with the feel of a tranquil and secluded garden



Disclaimer: All information contained therein is gathered from relevant third parties sources. We cannot guarantee or give any warranty about the information provided. Interested parties must rely solely on their own enquiries.

3

2

5

Tender

Wed 14th May

View

ljhooker.co.nz/CXVGUK

Contact

Jason Trowbridge

021 358 888

jtrowbridge.ponsonby@ljhooker.co.nz

LJ Hooker Ponsonby

(09) 376 7530

Ponsonby Estate Agents Limited

sanctuary, the home and grounds have been beautifully maintained allowing a feeling of escapism and resort style living.

Every living space of the dual level home looks directly out at the water, the magnificent westerly aspect allowing the late afternoon sun to linger with its light dancing though the property and gardens as the sun sets over the harbour.

Lovers of mid-century architecture will delight in the potential to harness the 255m2 residence's natural charm, configured with a kitchen, two living areas, three bedrooms and a bathroom upstairs, while the lower level includes a large rumpus or games room with a bar area, bathroom, sauna and a separate boat shed room for storing all the water sports gear that leads out to the beach and boat ramp.

Call your architect and create the brand new domain of your dreams atop the supersized 1,118m2 land area. Unrivalled and incomparable in the most delightful and exclusive location imaginable.

Please copy and paste this link to download property information: <https://vltre.co/083sZ9>
PLEASE NOTE THE TENDER CLOSING DATE FOR 16 HARBOUR VIEW RD POINT CHEVALIER AUCKLAND HAS BEEN BOUGHT FORWARD TO 5 PM WEDNESDAY THE 14TH OF MAY 2025

More About this Property

Property ID	CXVGUK
Property Type	House
House Size	255 m2
Land Area	1118 m2
Licensed Real Estate Agents (REAA2008)	

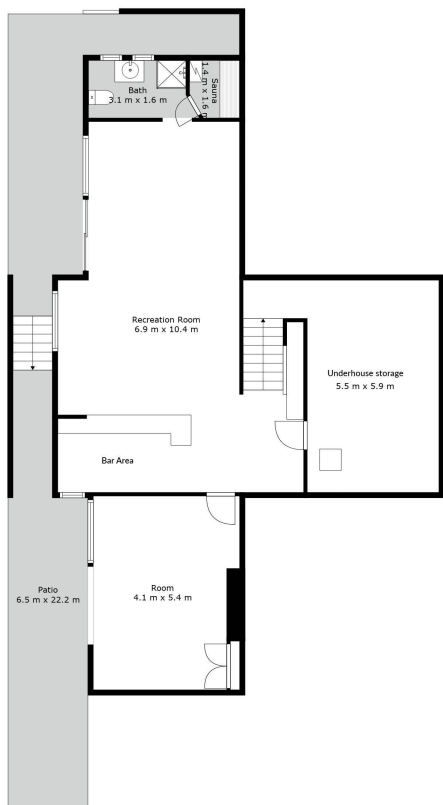
Jason Trowbridge 021 358 888
Investment Specialist | jtrowbridge.ponsonby@ljhooker.co.nz

LJ Hooker Ponsonby (09) 376 7530
Ponsonby Estate Agents Limited
53 Ponsonby Road, PONSONBY NZ 1011
ponsonby@ljhooker.co.nz | ponsonby@ljhooker.co.nz

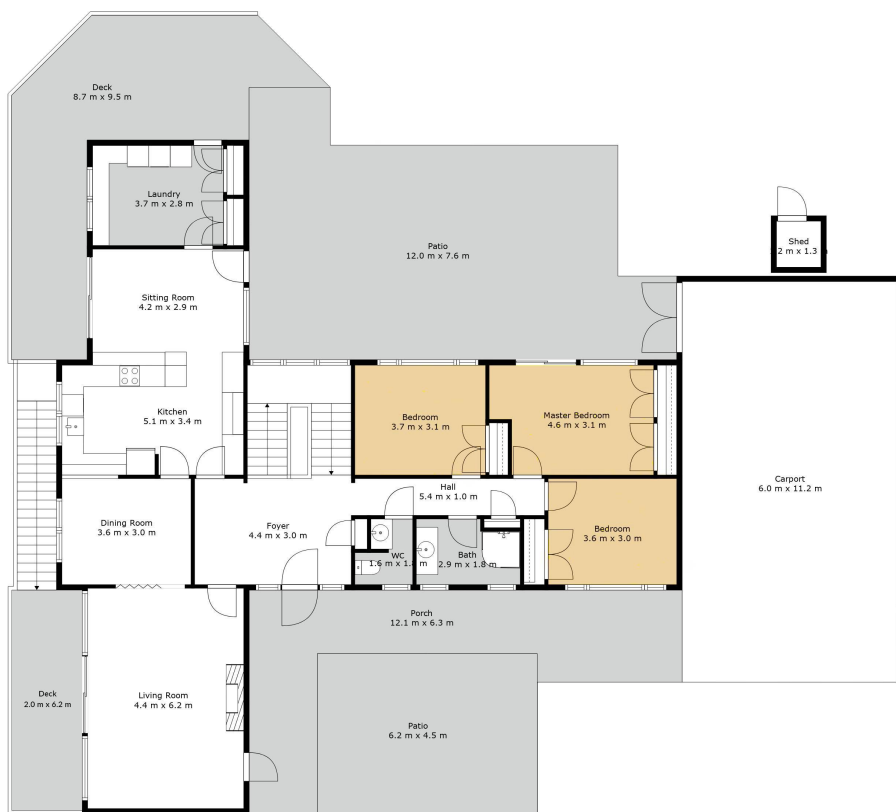


Disclaimer: All information contained therein is gathered from relevant third parties sources.
We cannot guarantee or give any warranty about the information provided. Interested parties must rely solely on their own enquiries.

LJ Hooker Ponsonby
(09) 376 7530
Ponsonby Estate Agents Limited



Floor 1



Floor 2

Sizes And Dimensions Are Approximate, Actual May Vary.

