



2/2 Milbrook Crescent, Pimpama




Ready To Move In !

Introducing a splendid opportunity for first-time buyers, savvy investors, and retirees seeking a low-maintenance lifestyle without compromising on outdoor space: 2/2 Milbrook Cres, Pimpama, QLD, 4209. This appealing duplex, nestled on a desirable corner block, offers the perfect blend of comfort, convenience, and potential.

Ready to move in, this vacant residence beckons your prompt expression of interest. The property features two well-appointed bedrooms and a contemporary bathroom, boasting a large shower, a stylish stone benchtop vanity, and a toilet designed with modern living in mind. Convenience is further embodied in the integrated laundry found within the spacious garage.

Step into the heart of the home, where the kitchen, dining, and living areas merge into a open-plan space, complete with an air conditioning unit for your year-round comfort. This inviting area seamlessly transitions to the alfresco, where the expansive, fenced garden unfolds-a rarity for a duplex and an idyllic haven for children and small pets to roam freely.

The generous outdoor area promises a private retreat or a delightful entertaining space for guests. Additionally, the property's position on the crescent ensures a sense of seclusion and tranquillity.

2  1  2 

FOR SALE

Price By Negotiation

AGENTS

Dawie Olivier
0447 822 879
dolivier@ljhg.com.au

Mel Johnson
0406 336 133
mjohnson@ljhg.com.au

AGENCY

LJ Hooker Coomera
(07) 5585 7888

All information contained therein is gathered from relevant third parties sources.
We cannot guarantee or give any warranty about the information provided.
Interested parties must rely solely on their own enquiries.

 **LJ Hooker**

Whether you're looking to grow your property portfolio or take your first step onto the property ladder, this vacant and ready-to-move-in abode is an investment in both value and lifestyle. Don't delay-register your interest today and make 2/2 Milbrook Cres your new home or next astute investment.

Additional Features:

- Two well-appointed bedrooms, each with a ceiling fan and wardrobe
- Contemporary bathroom complete with toilet, oversized shower, and stone-topped vanity
- Open-plan kitchen, dining, and lounge enhanced by air conditioning for year-round comfort
- Single-car lock-up garage incorporating laundry area
- Rental appraisal of \$570 per week effective from 27 October 2025
- Expansive backyard perfectly suited for kids and pets

Why families love living in Pimpama:

- Pimpama offers convenient location, access to amenities, and family-friendly atmosphere.
- Close to schools, shopping centres, parks, and the M1 motorway, making it easy for families to access essential services and enjoy recreational activities.
- Pimpama is known for its modern homes and well-planned community spaces, creating a comfortable and convenient living environment.

Disclaimer: Whilst every effort has been made to ensure the accuracy of these particulars, no warranty is given by the owner or the agent as to their accuracy. Interested parties should not rely on these particulars as representations of fact but must instead satisfy themselves by inspection or otherwise.

MORE DETAILS

Property ID	43J1GTJ
Property Type	Unit
House Size	100 m2
Including	Air Conditioning Dishwasher Built-in-Robes Remote Garage

Dawie Olivier 0447 822 879

Sales Specialist | dolivier@ljhgc.com.au

Mel Johnson 0406 336 133

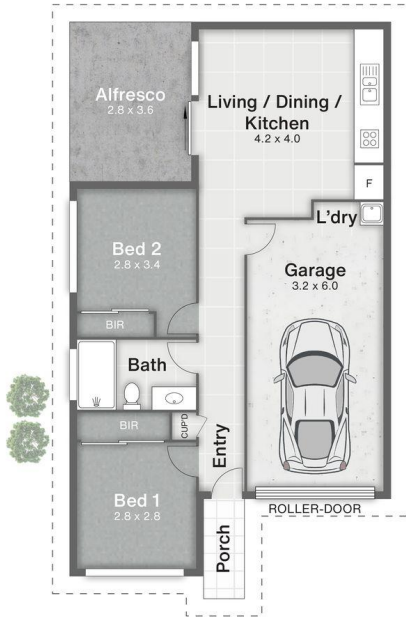
Sales Specialist | mjohnson@ljhgc.com.au

LJ Hooker Coomera (07) 5585 7888

The Hub, 5/90 Days Road, UPPER COOMERA QLD 4209
coomera.ljhooker.com.au | coomera@ljhgc.com.au



- 1 Porch
- 2 Garage
- 3 Alfresco



Unit 2/2 Milbrook Crescent **PIMPAMA**

2 | 1 | 1 | 100m²



DISCLAIMER
 This is not a legal document; all measurements and dimensions are approximate and are subject to errors, omission or misstatement. No liability will be accepted. Plans are shown for marketing purposes only.