



Pimpama, 8/2 Bundy Court

Townhouse Living In Prime Location



Located in the Strawberry Fields Estate, this townhouse is ideal for investors, first-time buyers, or those looking to downsize. The property features three bedrooms, an open-plan living area, and a fully fenced courtyard.

Ground Floor:

- Kitchen with stone benchtops
- Open-plan living and dining area with a balcony
- Fenced courtyard connected to the living area

Upstairs:

- Master bedroom, ensuite, and walk-in robe

For Sale

AUCTION ON SITE 7/12/2024 @ 10AM

View

ljhooker.com.au/1Y6GGWH

Contact

Nicole Hintz

0403 895 705

nhintz@ljhgc.com.au

Liza Neuss

0447 006 098

liza@ljhgc.com.au

LJ Hooker

LJ Hooker Ormeau
(07) 5549 4500

Disclaimer: All information contained therein is gathered from relevant third parties sources. We cannot guarantee or give any warranty about the information provided. Interested parties must rely solely on their own enquiries.

- Two additional bedrooms with built-in robes
- Main bathroom with shower and bath

Additional Features:

- Double lock-up garage
- Laundry In Garage
- Water tank

Conveniently located near Pimpama City Shopping Centre, doctors, and the upcoming Pimpama train station. Close to schools, major highways, Coomera Westfield, and theme parks.

Disclaimer: This property is being sold by auction and therefore a price guide cannot be provided. The website may have filtered the property into a price bracket for website functionality purposes.

More About this Property

Property ID	1Y6GGWH
Property Type	Townhouse
Including	Courtyard Balcony Built-in-Robes Remote Garage

Nicole Hintz 0403 895 705

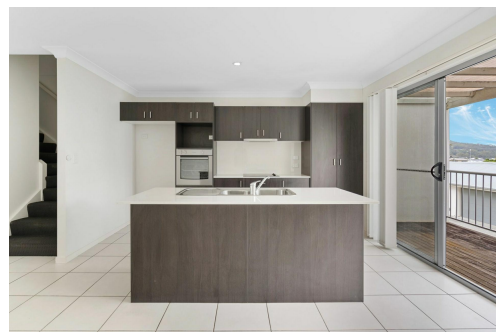
Director | L.R.E.A | Independent Contractor | nhintz@ljhgc.com.au

Liza Neuss 0447 006 098

Sales Associate to Nicole Hintz Independent Contractor | liza@ljhgc.com.au

LJ Hooker Ormeau (07) 5549 4500

Unit 10 Norfolk Village Shopping Ctr, 170-174 Pascoe Road, ORMEAU QLD 4208
ormeau.ljhooker.com.au | ormeau@ljhgc.com.au

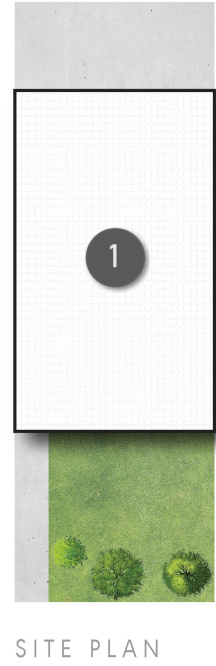
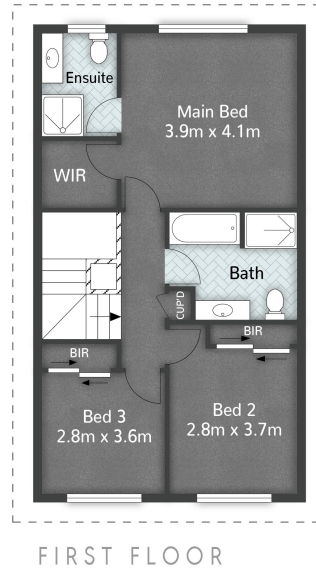
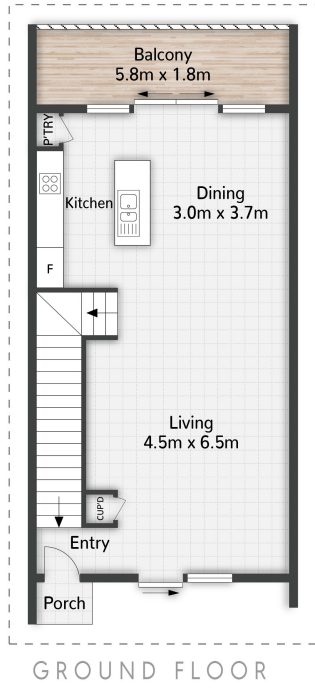
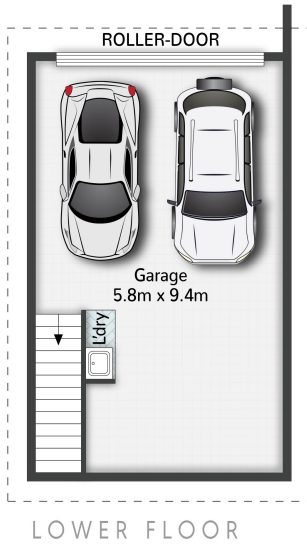


**LJ Hooker Ormeau
(07) 5549 4500**

Disclaimer: All information contained therein is gathered from relevant third parties sources. We cannot guarantee or give any warranty about the information provided. Interested parties must rely solely on their own enquiries.

LEGEND

| 1 RESIDENCE



Unit 8/2 Bundy Court PIMPAMA

3 | 2 | 2 | 188m²



All dimensions are approximate; they are subject to errors and inaccuracies and no liability will be accepted. Plans are shown for marketing purposes only.