



## Pimpama, 1/30 Bidmead Circuit

Ready To Sell Investment Property

Tenanted until 18 November 2025

Nestled in the burgeoning suburb of Pimpama, this contemporary duplex at 1/30 Bidmead Circuit presents a compelling investment opportunity. Boasting an intelligently designed 165 sqm layout over two levels, this town-house is a cut above the rest, with its modern aesthetics and array of luxurious features.

Upon entry, investors will appreciate the functional elegance of the open-plan living and dining area, seamlessly flowing onto an inviting outdoor alfresco - perfect for Queensland's sublime climate. The sophisticated kitchen, complete with electric cooktop, gleaming stainless steel appliances, and exquisite stone benchtops, caters to both the casual cook and the culinary enthusiast alike.

Upstairs, the master bedroom is a serene retreat, equipped with a split system aircon for year-round comfort, a spacious walk-in robe, and a chic private ensuite. Two additional



**For Sale**

Price By Negotiation

**View**

[ljhooker.com.au/4321GTJ](http://ljhooker.com.au/4321GTJ)

**Contact**

**Dawie Olivier**

0447 822 879

[dolivier@ljhgc.com.au](mailto:dolivier@ljhgc.com.au)

**Nykisha Brown**

0435 990 266

[nbrown@ljhgc.com.au](mailto:nbrown@ljhgc.com.au)

# LJ Hooker

**Disclaimer:** All information contained therein is gathered from relevant third parties sources.

We cannot guarantee or give any warranty about the information provided. Interested parties must rely solely on their own enquiries.

**LJ Hooker Coomera**  
**(07) 5585 7888**

carpeted bedrooms, each with built-in robes, are serviced by a modern main bathroom featuring a shower and bath combination.

This property's exceptional features extend to a built-in study nook, LED downlights, smart door lock, ceiling fans throughout, and additional storage under the staircase. Practicalities are well-attended to with a separate toilet, a double lock-up garage, and a fully fenced, low-maintenance yard.

Situated in a boutique complex of only 15 units, with fast NBN connectivity, investors will recognise the added value with Pimpama City Shopping Centre and the imminent Pimpama train station within walking distance. Excellent schools, highway access, the largest Home Centre on the Gold Coast, including Bunnings, Westfield Coomera, and major theme parks are all within a short drive.

This property represents a smart addition to any investment portfolio, promising strong rental demand and capital growth potential in a rapidly expanding locale.

Don't hesitate, contact Dawie Olivier, 0447 822 879 to register your interest asap !

#### Additional Features:

- Large master bedroom with ensuite & walk-in closet
- 2 Additional bedrooms with ceiling fans and big closets
- Open plan living area with kitchen and dining that open onto the alfresco and courtyard
- Electric oven, cooktop and hot water
- Private courtyard
- Double lock up garage
- Under stairs storage
- Laundry in garage
- Tenanted at \$600pw with amazing tenants
- Body corporate approx \$44 per week

#### Why families love living in Pimpama:

- Pimpama offers a great balance of affordability, convenience, and family-friendly amenities, making it an attractive option for families looking to settle down in a growing community.
- The area boasts modern shopping centres, schools and healthcare facilities, making it convenient for daily living.
- Situated between Brisbane and the Gold Coast, Pimpama provides easy access to both cities and their amenities.
- Pimpama offers a welcoming and family-oriented atmosphere, with plenty of parks, playgrounds, and sports facilities for children of all ages.

## More About this Property

<b>Property ID</b>	4321GTJ
<b>Property Type</b>	Townhouse
<b>House Size</b>	165 m2
<b>Land Area</b>	98 m2
<b>Including</b>	Ensuite Air Conditioning Toilets (1) Courtyard Dishwasher Built-in-Robes

### Dawie Olivier 0447 822 879

Sales Specialist | [dolivier@ljhgc.com.au](mailto:dolivier@ljhgc.com.au)

### Nykisha Brown 0435 990 266

Sales Specialist | [nbrown@ljhgc.com.au](mailto:nbrown@ljhgc.com.au)

### LJ Hooker Coomera (07) 5585 7888

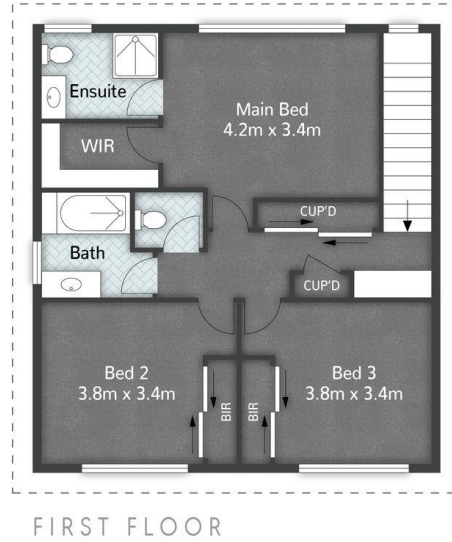
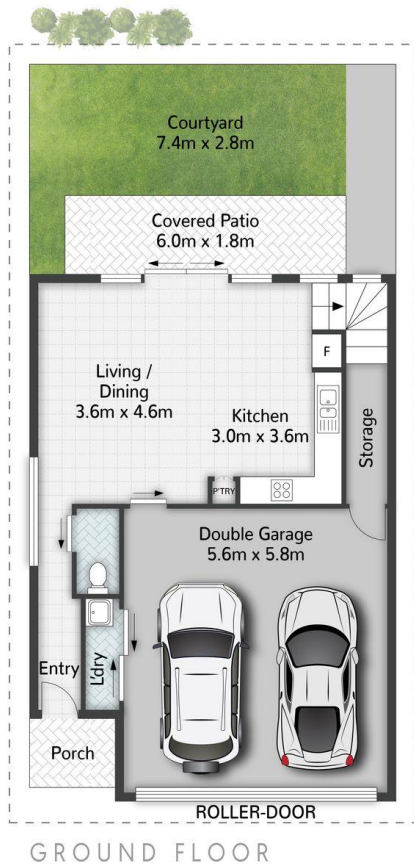
The Hub, 5/90 Days Road, UPPER COOMERA QLD 4209  
[coomera.ljhooker.com.au](http://coomera.ljhooker.com.au) | [coomera@ljhgc.com.au](mailto:coomera@ljhgc.com.au)



# LJ Hooker

**Disclaimer:** All information contained therein is gathered from relevant third parties sources. We cannot guarantee or give any warranty about the information provided. Interested parties must rely solely on their own enquiries.

**LJ Hooker Coomera**  
**(07) 5585 7888**



1/30 Bidmead Circuit PIMPAMA

3 | 2 | 2 | 177m<sup>2</sup>

**LJ Hooker**

All dimensions are approximate; they are subject to errors and inaccuracies and no liability will be accepted. Plans are shown for marketing purposes only.

**LJ Hooker**

**LJ Hooker Coomera  
(07) 5585 7888**

**Disclaimer:** All information contained therein is gathered from relevant third parties sources. We cannot guarantee or give any warranty about the information provided. Interested parties must rely solely on their own enquiries.