






Coming soon

96 Fountain Street, Pimpama

4  2  2 

450sqm block

Dawie Olivier 0447 822 879

Pimpama, 96 Fountain Street

Coming Soon - Dressed To Impress !

Coming Soon

Welcome to 96 Fountain Street, Pimpama, QLD 4209 - a stunning family abode that exudes both sophistication and warmth, a perfect haven for families and a sterling opportunity for investors.

Nestled on a generous 450sqm block, this immaculately presented 4-bedroom, 2-bathroom house combines style with functionality, boasting enough space for a small pool, should one desire. The current owner, a professional painter, ensures that each room radiates with either exquisite wallpaper or flawless paintwork.

Step inside to discover the charm of laminate flooring, a modern twist that will undoubtedly catch the eye of guests, as opposed to traditional tiling. The bathrooms, toilets, and laundry room are adorned with floor-to-ceiling tiles, enhancing the property's sleek finish.

4  2  2 

For Sale

Price By Negotiation

View

By Appointment

Contact

Dawie Olivier

0447 822 879

dolivier@ljhg.com.au

Mel Johnson

0406 336 133

mjohnson@ljhg.com.au

LJ Hooker

Disclaimer: All information contained therein is gathered from relevant third parties sources.

We cannot guarantee or give any warranty about the information provided. Interested parties must rely solely on their own enquiries.

LJ Hooker Coomera
(07) 5585 7888

Entertainment is a breeze with a separate media room, complete with air conditioning - perfect for cosy movie nights. The open-plan kitchen, dining, and living area flows seamlessly onto a private, decked alfresco - an idyllic setting for family gatherings or entertaining friends.

The home is climatically controlled with two air conditioning units, ensuring comfort throughout the year. Retreat to the master suite, situated at the rear, offering an ensuite and walk-in robe with views over the serene garden.

Each of the spacious bedrooms is fitted with ceiling fans for those warm summer nights. Located near Copeland Park, local shopping, dining, fast food outlets, schools, and the motorway, this property is not just a home; it's a lifestyle.

Ideal for first-time buyers, downsizers, or investors, 96 Fountain Street stands ready to impress and awaits its next chapter with you.

Perfectly located near play parks, the motorway, Pimpama Sports Hub, and shopping centres, this owner-occupied property is a sanctuary for families, investors, and those with a penchant for recreational vehicles. Embrace a lifestyle where luxury meets practicality at 96 Fountain Street, Pimpama.

Other than location, convenience and affordability, this lovely property also offers:

- 4 bedrooms including large Master at the rear with walk in robe and en-suite
- 3 additional bedrooms with ceiling fans and wardrobes
- Open plan living, kitchen and dining with quality appliances
- Separate media room with aircon
- Undercover alfresco area with garden views
- Low maintenance gardens
- Separate laundry
- Double internal access garage with auto door

Why families love living in Pimpama:

- Pimpama offers a blend of family friendly amenities, a strong sense of community and a variety of urban conveniences and outdoor recreation
- The M1 motorway is close by which make commuting so much easier
- It is walking distance to Copeland Park
- It is close to restaurants, childcare centres, schools, Bunnings, Westfield Coomera, Costco, Pimpama City shopping centre and so much more

More About this Property

Property ID	4370GTJ
Property Type	House
House Size	198 m2
Land Area	450 m2
Including	Ensuite Toilets (1)

Dawie Olivier 0447 822 879
Sales Specialist | dolivier@ljhgc.com.au
Mel Johnson 0406 336 133
Sales Specialist | mjohnson@ljhgc.com.au

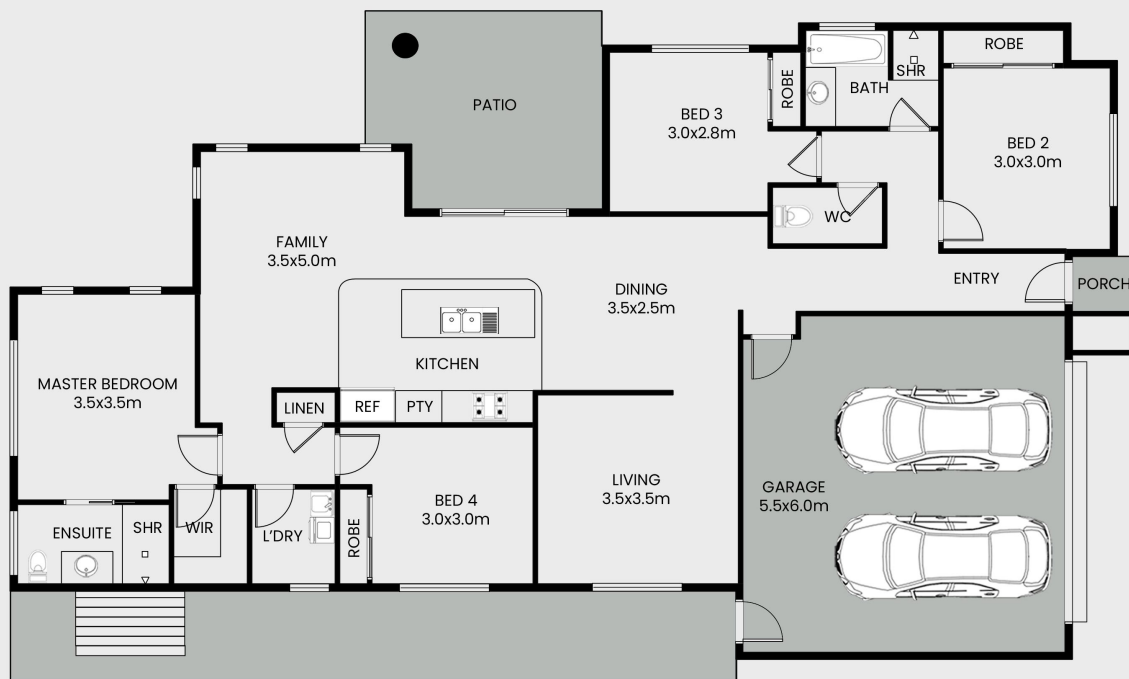
LJ Hooker Coomera (07) 5585 7888
The Hub, 5/90 Days Road, UPPER COOMERA QLD 4209
coomera.ljhooker.com.au | coomera@ljhgc.com.au



LJ Hooker Coomera
(07) 5585 7888

Disclaimer: All information contained therein is gathered from relevant third parties sources.
We cannot guarantee or give any warranty about the information provided. Interested parties must rely solely on their own enquiries.

96 Fountain Street, Pimpama



 **LJ Hooker**

FLOOR PLAN

FLOOR AREA : 183.41 m²
PATIO : 13.57 m²
PORCH : 1.67 m²
TOTAL : 198.65 m²

This floor plan including furniture, fixture measurements and dimensions are approximate and for illustrative purposes only. BoxBrownie.com gives no guarantee, warranty or representation as to the accuracy and layout. All enquiries must be directed to the agent, vendor or party representing this floor plan.

LJ Hooker

LJ Hooker Coomera
(07) 5585 7888

Disclaimer: All information contained therein is gathered from relevant third parties sources. We cannot guarantee or give any warranty about the information provided. Interested parties must rely solely on their own enquiries.