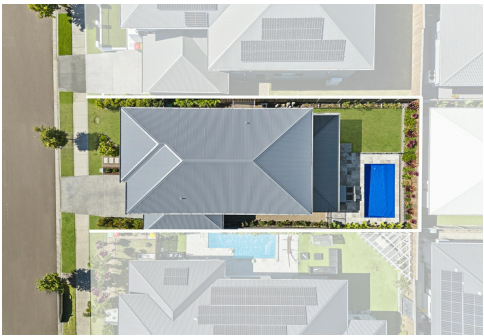


 LJ Hooker

**SOLD**



## Pimpama, 88 Somerset Circuit

**OWNERS HAVE BOUGHT INTERSTATE! DONT MISS OUT!!!!**

Welcome to 88 Somerset Circuit!

Where timeless Hamptons elegance meets contemporary living, this centrally located family home in Pimpama offers the perfect blend of luxury, space, and convenience. Situated on a 420m2 block, Designed with family living and entertaining in mind, this stunning residence features four bedrooms, two and a half bathrooms and multiple living zones across two spacious levels.

At the heart of the home is a gourmet chef's kitchen, complete with premium appliances, gas cooking, sleek cabinetry, and a large island bench with seating-ideal for casual meals or hosting guests. The open-plan living and dining area flows effortlessly from the kitchen, featuring wide-plank flooring, modern finishes, and a touch of coastal sophistication.

4 

2 

2 

1 

**For Sale**  
Contact Agent

**View**  
[ljhooker.com.au/DKJ0C](http://ljhooker.com.au/DKJ0C)

**Contact**  
**David Brown**  
0432 010 020  
[david.brown@ljhooker.com.au](mailto:david.brown@ljhooker.com.au)

**Lucas Rupp**  
0406 249 324  
[lucas.rupp@ljhooker.com.au](mailto:lucas.rupp@ljhooker.com.au)

 LJ Hooker

**Disclaimer:** All information contained therein is gathered from relevant third parties sources. We cannot guarantee or give any warranty about the information provided. Interested parties must rely solely on their own enquiries.

**LJ Hooker Oxenford**  
**(07) 5632 8428**

Step outside to the covered alfresco patio, overlooking a lush, low-maintenance backyard and sparkling in-ground swimming pool-perfect for entertaining all year round.

Upstairs, you'll find four generously sized bedrooms, all with built-in robes and ducted air conditioning. The master suite includes a luxurious ensuite and walk-in robe. A stylish family bathroom with a separate toilet and an additional living space complete the upper level.

Why you will love this home:

- 4 Large Bedrooms
- 3 living areas + Study
- 2.5 Bathrooms
- Gourmet Kitchen with Gas Cooking & Quality Appliances
- Ducted Air Conditioning Throughout
- Expansive Covered Entertainer's Patio
- Sparkling In-Ground Swimming Pool
- Trailer access
- Fully Fenced, Low-Maintenance Yard
- Approx 420m<sup>2</sup> Block
- Security screens
- Security cameras
- Built in 2022

**\*\*Conveniently Located Near:\*\***

- 600m to Woolworths
- 1.9km to Gainsborough State School
- 1.5km to Gainsborough Greens Golf Club
- 2.7km St Joseph's College
- 3.7km to Pimpama City Shopping Centre
- 2.8km to Bunnings Warehouse
- 2.3km to King's Christian College Pimpama
- 7.2km to Dreamworld
- 5.7km to Westfield Coomera

Don't miss out on this amazing opportunity. Contact David Brown & Lucas Rupp for more

Disclaimer:

We have in preparing this information used our best endeavours to ensure that the information contained herein is true and accurate, but accept no responsibility and disclaim all liability in respect of any errors, omissions, inaccuracies or misstatements that may occur. Prospective purchasers should make their own enquiries to verify the information contained herein.



**LJ Hooker Oxenford**  
**(07) 5632 8428**

**Disclaimer:** All information contained therein is gathered from relevant third parties sources. We cannot guarantee or give any warranty about the information provided. Interested parties must rely solely on their own enquiries.

## More About this Property

<b>Property ID</b>	DKJ0C
<b>Property Type</b>	House
<b>Land Area</b>	420 m2
<b>Including</b>	Ensuite Study Pool

### David Brown 0432 010 020

Principal | LREA | david.brown@ljhooker.com.au

### Lucas Rupp 0406 249 324

Sales Associate to David Brown | lucas.rupp@ljhooker.com.au

### LJ Hooker Oxenford (07) 5632 8428

13/5 Michigan Drive, OXFORD QLD 4210

oxenford.ljhooker.com.au | oxenford@ljhooker.com.au



**LJ Hooker Oxenford**  
**(07) 5632 8428**

**Disclaimer:** All information contained therein is gathered from relevant third parties sources. We cannot guarantee or give any warranty about the information provided. Interested parties must rely solely on their own enquiries.



:: Lower Level ::

:: Upper Level ::

88 Somerset Circuit, Pimpama

BED 4 BATH 2.5 CAR 2

Internal: 259 m<sup>2</sup> | External: 12 m<sup>2</sup> | Approx Total: 271 m<sup>2</sup>

Whilst every attempt has been made to ensure the accuracy of the floor plan contained here, measurements of doors, windows, rooms and any other item are approximate and no responsibility is taken for any error, omission, or misstatement. This plan is for illustrative purposes only and should only be used as such by any prospective purchaser.

