

8 Oakwood Street, Pimpama

Elevated Family Living with Space, Comfort & Future Potential

Positioned on a large, elevated block designed to capture cooling breezes, this well-presented four-bedroom home offers comfort, space and outstanding lifestyle convenience in the heart of growing Pimpama.

The thoughtfully designed floorplan features four generous bedrooms, including a master retreat complete with ensuite and walk-in robe, while the remaining bedrooms are serviced by a central family bathroom. Reverse cycle air conditioning in master bedroom and living space. Ceiling fans throughout ensure year-round comfort.

Immaculately maintained, this home presents an exceptional opportunity for a new family to settle in and make it their own, or for an investor seeking strong future growth in a high-demand location. With ample outdoor space, there is plenty of room to add a pool and further enhance the property's value.

Ideally located close to all key amenities including the Pimpama train station, Pimpama Sports Hub, easy access to the M1 motorway, and

4  2  2 

FOR SALE
\$979,000+

AGENTS

Mel Johnson
0406 336 133
mjohnson@ljhg.com.au

AGENCY

LJ Hooker Coomera
(07) 5585 7888

All information contained therein is gathered from relevant third parties sources.
We cannot guarantee or give any warranty about the information provided.
Interested parties must rely solely on their own enquiries.

 **LJ Hooker**

a selection of quality public and private schools - everything you need is right at your doorstep.

Key features include:

- Large elevated block capturing natural breezes
- Four well-proportioned bedrooms
- Master with ensuite and walk-in robe
- Two bathrooms
- Ceiling fans throughout and reverse cycle air conditioning living area
- Well maintained and beautifully presented
- Room for a pool
- Strong investment appeal in a growth corridor

Why people love living in Pimpama:

- The M1 motorway is close by which make commuting so much easier
- Pimpama train station has just opened, making access to the beaches so easy
- Situated close to walking trails and playgrounds
- It is walking distance to the Pimpama Sports Hub
- It is close to restaurants, childcare centres, schools, Bunnings, Westfield Coomera, Costco, Pimpama City shopping centre and so much more.

A quality home offering lifestyle, location and long-term potential - this is one not to be missed.

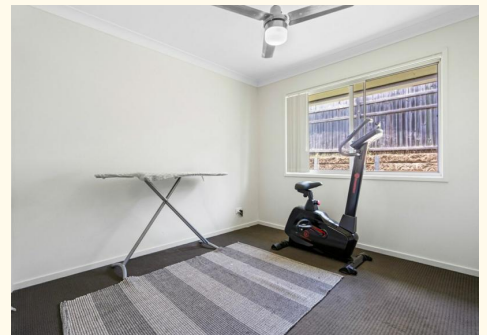
- Disclaimer: The photos used are taken while tenanted. It is currently rented at \$690/week, due for renewal 16/2/2026. The current rental appraisal is \$790-\$840/week.
- Whilst every effort has been made to ensure the accuracy of these particulars, no warranty is given by the owner or the agent as to their accuracy. Interested parties should not rely on these particulars as representations of fact but must instead satisfy themselves by inspection or otherwise.

MORE DETAILS

| | |
|---------------|----------------------|
| Property ID | 43MFGTJ |
| Property Type | House |
| Land Area | 552 m2 |
| Including | Ensuite |
| | Air Conditioning |
| | Dishwasher |
| | Outdoor Entertaining |
| | Built-in-Robes |
| | Fully Fenced |
| | Remote Garage |

Mel Johnson 0406 336 133
Sales Specialist | mjohnson@ljhgc.com.au

LJ Hooker Coomera (07) 5585 7888
The Hub, 5/90 Days Road, UPPER COOMERA QLD 4209
coomera.ljhooker.com.au | coomera@ljhgc.com.au





8 Oakwood Street PIMPAMA

4 | 2 | 2 | 182m²

LJ Hooker

Coomera Ormeau Tamborine Mountain

All dimensions are approximate; they are subject to errors and inaccuracies and no liability will be accepted. Plans are shown for marketing purposes only.

All information contained therein is gathered from relevant third parties sources. We cannot guarantee or give any warranty about the information provided. Interested parties must rely solely on their own enquiries.

LJ Hooker