




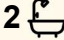
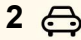
7 Maurie Pears Crescent, Pimpama

Owner Occupier - Ready To Sell

Immerse yourself in the tranquil bliss of 7 Maurie Pears Crescent, Pimpama, a delightful abode designed to cater to the needs of first home buyers, discerning investors, retirees, and growing families alike. Nestled on a peaceful 441 square metre block, this four-bedroom, two-bathroom house promises a harmonious blend of comfort and convenience.

From the moment you approach this inviting property, you'll notice the commitment to security, with sturdy screens and doors providing peace of mind. The residence boasts an adaptable floor plan; the fourth bedroom has been ingeniously transformed into a spacious walk-in pantry, enhancing the kitchen's functionality—a reversible modification should you require additional sleeping quarters. This room is further enhanced by a sky light, bathing the space in natural light.

The heart of the home is an expansive open plan area that includes a well-appointed kitchen with a large stone island, perfect for casual dining, complemented by a newly created walk-in pantry. Two more skylights along with LED downlights and air conditioning, ensure a well-lit and comfortable environment. The adjacent alfresco area invites you to enjoy the Queensland sunshine with ease.

4  2  2 

FOR SALE

Price By Negotiation

AGENTS

Dawie Olivier
0447 822 879
dolivier@ljhg.com.au

AGENCY

LJ Hooker Coomera
(07) 5585 7888

All information contained therein is gathered from relevant third parties sources.
We cannot guarantee or give any warranty about the information provided.
Interested parties must rely solely on their own enquiries.

 **LJ Hooker**

High 2.7m ceilings accentuate the sense of space throughout, while a carpeted media room offers a cosy retreat. The master suite is a private sanctuary, featuring a walk-in robe and an ensuite with a stone benchtop. Bedrooms two and three are generously sized, complete with built-in wardrobes.

Outdoors, the low-maintenance backyard is a horticulturalist's dream, featuring stone retaining walls and an established veggie garden. With the flexibility to expand the lawn or maintain a verdant oasis, it's perfect for both playful children and pets.

This owner-occupied property is finished in tasteful neutral tones and boasts a combination of tiled, carpet, and floorboard flooring. Additionally, with a 5kW solar system approximately five years old, electric cooktop, electric hot water, and double parking space, this home is as practical as it is charming.

Seize the opportunity to make 7 Maurie Pears Crescent your own sanctuary, a place where memories are waiting to be made.

Other than location, convenience and elegance, this property also offers:

- Owner occupied
- 441 Sqm land size
- 191 Sqm floorplan
- Master bedroom that includes a walk in robe and ensuite
- 2 additional bedrooms with ceiling fans and wardrobes
- Multiple living spaces perfect for the whole family
- Stunning kitchen with quality appliances perfect for the family chef
- Open plan dining, kitchen and living overlooking the alfresco
- Aircon in living space
- Undercover alfresco area
- Low maintenance gardens perfect for kids and pets
- Double garage with remote control door

Why families love living in Pimpama:

- Pimpama offers convenient location, access to amenities, and family-friendly atmosphere.
- Close to schools, shopping centres, parks, and the M1 motorway, making it easy for families to access essential services and enjoy recreational activities.
- Pimpama is known for its modern homes and well-planned community spaces, creating a comfortable and convenient living environment.

MORE DETAILS

Property ID	43NJGTJ
Property Type	House
House Size	191 m2
Land Area	441 m2
Including	Ensuite

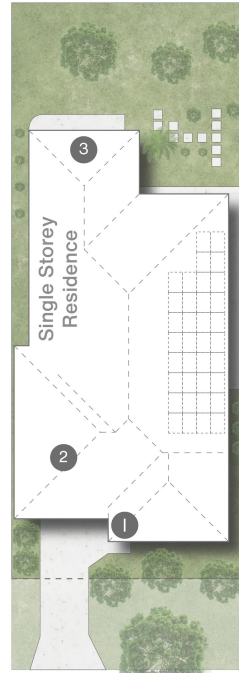
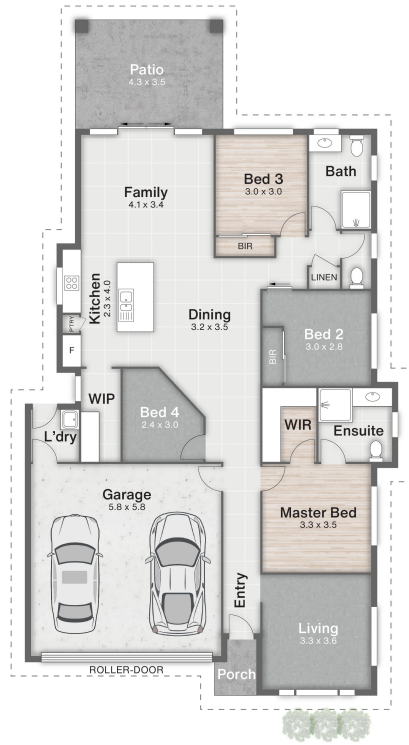
Dawie Olivier 0447 822 879

Sales Specialist | dolivier@ljhg.com.au

LJ Hooker Coomera (07) 5585 7888

The Hub, 5/90 Days Road, UPPER COOMERA QLD 4209
coomera.ljhooker.com.au | coomera@ljhg.com.au





- 1 Porch
- 2 Garage
- 3 Patio

Maurie Pears Crescent

7 Maurie Pears Crescent **PIMPAMA**

4 | 2 | 2 | 191m² | 441m²



DISCLAIMER
 This is not a legal document; all measurements and dimensions are approximate and are subject to errors, omission or misstatement. No liability will be accepted. Plans are shown for marketing purposes only.