



58 Milbrook Crescent, Pimpama

5 3 2

Rare Find - Single Title Duplex !

Nestled in the burgeoning community of Pimpama, the striking duplex at 1&2/58 Millbrook Crescent beckons investors, down-sizers, and families to a lifestyle of contemporary comfort and convenience. This dual dwelling, set upon a generous 404 square metre block, presents a rare opportunity to secure a property on a single title, built to impress in 2017.

Unit 1, an elegantly appointed home, boasts three spacious bedrooms, including a serene master bedroom with garden views, and two bathrooms adorned with chic stone benchtops. A dedicated laundry room, coupled with the stylish family bathroom that features both a bath and shower, elevates the sense of luxury. The heart of the home is the kitchen, showcasing stone benchtops, which seamlessly flows into the living and dining area. The air-conditioned living space opens onto an expansive alfresco, perfect for alfresco dining and relaxation. Bedrooms 2 and 3, both equipped with wardrobes and ceiling fans, ensure comfortable accommodations for all. The substantial garden space promises a safe haven for children and pets to frolic.

Unit 1 has a tenant on a fixed lease till 17 November 2025 at \$580pw

Unit 2 is an equally impressive abode, with two generously sized bedrooms and a sleek bathroom complemented by stone benchtops.

FOR SALE
Offers over \$1,299,000

AGENTS
Dawie Olivier
0447 822 879
dolivier@ljhgc.com.au

AGENCY
LJ Hooker Coomera
(07) 5585 7888

All information contained therein is gathered from relevant third parties sources.
We cannot guarantee or give any warranty about the information provided.
Interested parties must rely solely on their own enquiries.

LJ Hooker

The open-plan design integrates living, dining, and kitchen areas with stone benchtops, fostering a social atmosphere that spills out into the alfresco space.

Unit 2 has a tenant on a fixed lease till 1 July 2026 at \$550pw

With a single car garage for each unit, this duplex presents a hassle-free investment or living solution. It caters perfectly to those looking for a modern, low-maintenance property in a location that promises capital growth. This is an exceptional chance to embrace a sophisticated lifestyle or to diversify your property portfolio in the heart of Pimpama.

Live in one, lease the other - or double your investment returns by renting both. With strong rental demand in this sought-after location and modern features throughout, this is a golden opportunity that won't last long.

Contact Dawie on 0447 822 879 today to arrange your private inspection - opportunities like this are rare!

Why do families love living in Pimpama?

Pimpama is known for its blend of convenience, family-friendly amenities, and community atmosphere. The suburb boasts excellent schools, a variety of shopping and dining options, and is well-connected to the Gold Coast and Brisbane. Additionally, Pimpama offers a range of recreational activities, including parks, sports fields, and proximity to theme parks and beaches, making it an attractive place for families to live and play.

Disclaimer: Whilst every effort has been made to ensure the accuracy of these particulars, no warranty is given by the owner or the agent as to their accuracy. Interested parties should not rely on these particulars as representations of fact but must instead satisfy themselves by inspection or otherwise.

MORE DETAILS

Property ID	43FRGTJ
Property Type	House
House Size	220 m2
Land Area	404 m2

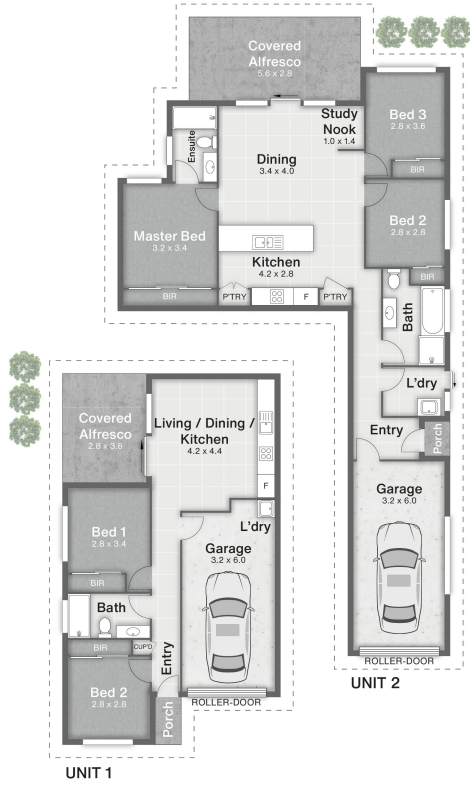
Dawie Olivier 0447 822 879

Sales Specialist | dolivier@ljhgc.com.au

LJ Hooker Coomera (07) 5585 7888

The Hub, 5/90 Days Road, UPPER COOMERA QLD 4209
coomera.ljhooker.com.au | coomera@ljhgc.com.au





- 1 Porch
- 2 Garage
- 3 Alfresco

Milbrook Crescent

58 Milbrook Crescent **PIMPAMA**

5 | 3 | 2 | 220m² | 404m²



DISCLAIMER
 This is not a legal document; all measurements and dimensions are approximate and are subject to errors, omission or misstatement. No liability will be accepted. Plans are shown for marketing purposes only.