



Pimpama, 47 Somerset Circuit

WHY BUILD - ALL THE HARD WORK HAS BE DONE!!!

Welcome to 47 Somerset Circuit, Pimpama-an exquisite blend of luxury and modern living in the prestigious Gainsborough Green estate. This stunning two-story home, built by the acclaimed Plantation Homes, combines timeless design with contemporary functionality. Set on a generous 698m² block with side access, the full potential of this breathtaking property is just waiting to be unlocked.

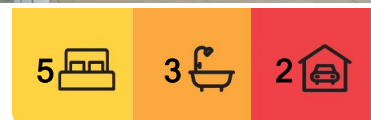
The heart of this home is the entertainer's kitchen-a spacious, well-appointed area featuring top-of-the-line appliances and butler's pantry, perfect for hosting guests. The open-plan layout effortlessly connects the kitchen, dining, and living spaces, extending seamlessly to the outdoor entertaining area, ensuring easy flow for any occasion.

Ideal for growing families, this home offers ample space and versatility.

Why you'll love this home:



Disclaimer: All information contained therein is gathered from relevant third parties sources. We cannot guarantee or give any warranty about the information provided. Interested parties must rely solely on their own enquiries.



For Sale
Contact Agent

View
ljhooker.com.au/BQJ0C

Contact
David Brown
0432 010 020
david.brown@ljhooker.com.au

Lucas Rupp
0406 249 324
lucas.rupp@ljhooker.com.au

LJ Hooker Oxenford
(07) 5632 8428

- Master bedroom with ensuite, walk-in robe, and a luxurious 2-person spa
- 4 additional bedrooms, including a guest bedroom with its own ensuite downstairs
- Chef's kitchen with butler's pantry, electric cooktop, 2 drawer dishwasher, stone benchtops, ample storage, and an elegant design
- 3.5 bathrooms, including 2 ensuites, a family bathroom, and a powder room downstairs
- Ducted air conditioning throughout
- 3 living areas, including a family and living room downstairs and a media room upstairs
- 2.7m high ceilings on the ground floor
- Secure side access with a gate
- Roller door leading from the garage to the backyard
- Solar
- Built by Plantation Homes, completed in July 2023
- Land size: 698m² | Internal space: Approx. 355m²

Enjoy the largest block in the estate with a low-maintenance yard that's been thoughtfully landscaped, offering a perfect balance of beauty and practicality. It's ideal for those who appreciate outdoor living without the upkeep.

Located in the prestigious Gainsborough Green estate, you'll have access to world-class amenities, parks, and recreational facilities, all while being part of a community that values quality living.

Don't miss your chance to call 47 Somerset Circuit home!

Disclaimer:

We have in preparing this information used our best endeavours to ensure that the information contained herein is true and accurate, but accept no responsibility and disclaim all liability in respect of any errors, omissions, inaccuracies or misstatements that may occur. Prospective purchasers should make their own enquiries to verify the information contained herein.

More About this Property

Property ID	BQJ0C
Property Type	House
Land Area	698 m2

David Brown 0432 010 020

Principal | LREA | david.brown@ljhooker.com.au

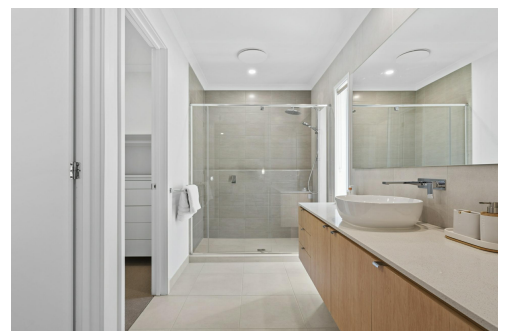
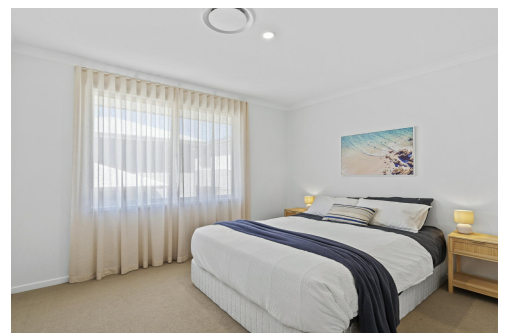
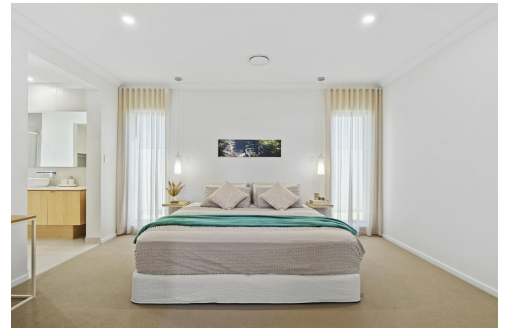
Lucas Rupp 0406 249 324

Sales Associate to David Brown | lucas.rupp@ljhooker.com.au

LJ Hooker Oxenford (07) 5632 8428

13/5 Michigan Drive, OXENFORD QLD 4210

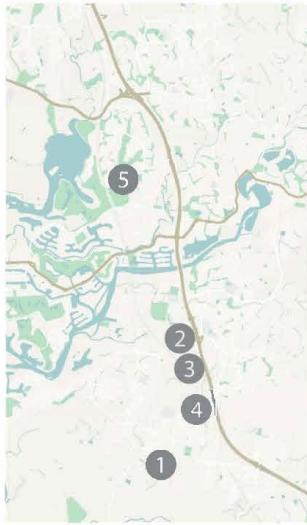
oxenford.ljhooker.com.au | oxenford@ljhooker.com.au



Disclaimer: All information contained therein is gathered from relevant third parties sources. We cannot guarantee or give any warranty about the information provided. Interested parties must rely solely on their own enquiries.

LJ Hooker Oxenford
(07) 5632 8428

- 1 RESIDENCE
- 2 DREAMWORLD
- 3 COOMERA SPORTS COMPLEX
- 4 COOMERA WESTFIELD
- 5 HELENSVALE GOLF COURSE



Location Map

:: Lower Level ::



:: Upper Level ::



47 Somerset Circuit, Pimpama

BED 5 BATH 3.5 CAR 2

Internal: 355 m² | External: 87 m² | Approx Total: 442 m²

Whilst every attempt has been made to ensure the accuracy of the floor plan contained here, measurements of doors, windows, rooms and any other item are approximate and no responsibility is taken for any error, omission, or misstatement. This plan is for illustrative purposes only and should only be used as such by any prospective purchaser.

