

47 Cairnlea Drive, Pimpama

Over the fence and into the Park!!


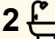
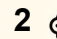
Modern Family Living in a Quiet Cul-de-sac in Pimpama

Tucked away in a peaceful cul-de-sac, this beautifully presented four-bedroom home offers the perfect blend of comfort, style, and practicality.

The spacious kitchen features a gas cooktop, ample storage, and plenty of bench space - ideal for everyday living and entertaining. The open-plan living area connects effortlessly to the covered outdoor patio and fully fenced yard, where you can relax and enjoy mountain views and fresh breezes.

All four bedrooms include built-in wardrobes and ceiling fans, while the master bedroom is complemented by its own ensuite. With ducted air conditioning, security screens, and a fresh neutral finish throughout, this home delivers both comfort and peace of mind.

Located in sought-after Pimpama, close to schools, shops, parks, and easy motorway access, this property represents an exceptional opportunity for families, first-home buyers, or investors alike.

4  2  2 

FOR SALE

Price By Negotiation

AGENTS

Mel Johnson
0406 336 133
mjohnson@ljhgc.com.au

Dawie Olivier
0447 822 879
dolivier@ljhgc.com.au

AGENCY

LJ Hooker Coomera
(07) 5585 7888

All information contained therein is gathered from relevant third parties sources.
We cannot guarantee or give any warranty about the information provided.
Interested parties must rely solely on their own enquiries.



Features you'll love:

- 4 bedrooms with built-in robes and ceiling fans
- 2 bathrooms including ensuite to master
- Spacious kitchen with gas cooktop and great storage
- Open-plan living flowing to alfresco entertaining area
- Fully fenced yard with mountain views
- Ducted air conditioning and security screens
- Double lock-up garage
- Quiet cul-de-sac position

Why families love living in Pimpama:

- The M1 motorway is close by which make commuting so much easier
 - Pimpama train station has just opened, making access to the beaches so easy
- Situated close to walking trails and playgrounds
- It is walking distance to the Pimpama Sports Hub
- It is close to restaurants, childcare centres, schools, Bunnings, Westfield Coomera, Costco, Pimpama City shopping centre and so much more

If you love convenience and peace this could be your home.

- Disclaimer: The photos used are taken while tenanted. The lease ends 26/02/2026 @\$700/week.
- Whilst every effort has been made to ensure the accuracy of these particulars, no warranty is given by the owner or the agent as to their accuracy. Interested parties should not rely on these particulars as representations of fact but must instead satisfy themselves by inspection or otherwise.

MORE DETAILS

Property ID	43J3GTJ
Property Type	House
Land Area	412 m2
Including	Air Conditioning Dishwasher Outdoor Entertaining Built-in-Robes Fully Fenced Remote Garage

Mel Johnson 0406 336 133

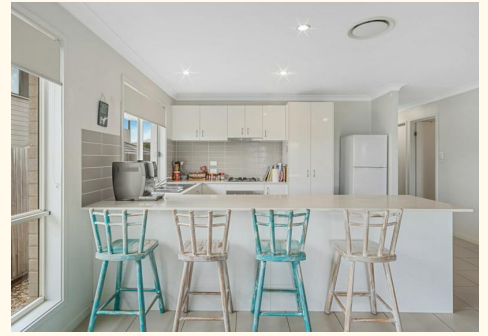
Sales Specialist | mjohnson@ljhgc.com.au

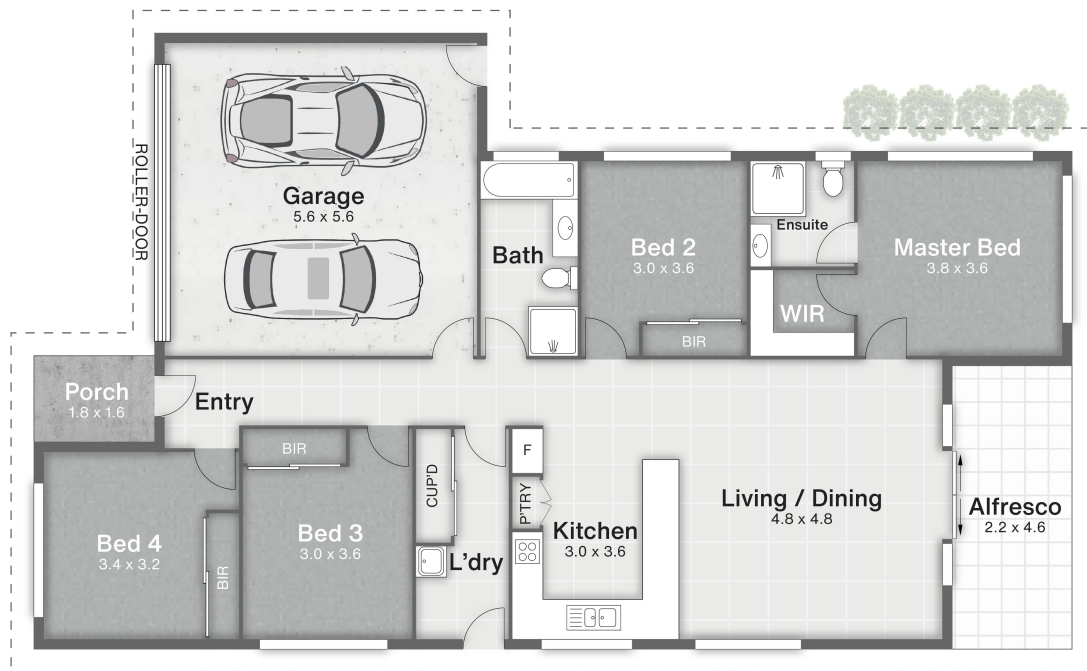
Dawie Olivier 0447 822 879

Sales Specialist | dolivier@ljhgc.com.au

LJ Hooker Coomera (07) 5585 7888

The Hub, 5/90 Days Road, UPPER COOMERA QLD 4209
coomera.ljhooker.com.au | coomera@ljhgc.com.au





47 Cairnlea Drive PIMPAMA

4 | 2 | 2 | 182m²

LJ Hooker

Coomera Ormeau Tamborine Mountain

All dimensions are approximate; they are subject to errors and inaccuracies and no liability will be accepted. Plans are shown for marketing purposes only.

All information contained therein is gathered from relevant third parties sources. We cannot guarantee or give any warranty about the information provided. Interested parties must rely solely on their own enquiries.

LJ Hooker