



Boundaries and dimensions are approximate only
Interested parties should conduct their own independent enquiries



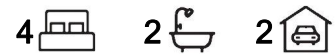
Pimpama, 45 Foley Crescent

More Than Just A Home !

Nestled within the serene Pacific Cove Estate, 45 Foley Cres, Pimpama, presents a splendid opportunity for families, downsizers, and savvy investors alike. This immaculate, owner-occupied house boasts a generous 375 square metres of land, offering a well-designed layout with four bedrooms and two bathrooms, complemented by two secure parking spaces.

Upon arrival, the Crimsafe-enhanced front door assures a secure and welcoming entrance to a home illuminated by stylish LED downlights. To the front, a versatile second living space awaits, ideal for quiet relaxation or as an entertainment zone. The master suite, located on the left, features air conditioning for year-round comfort, a big walk-in wardrobe, and an elegant en suite complete with his and her basins, stone benchtop, and floor-to-ceiling tiles for a touch of luxury.

The residence further encompasses a sizeable second bedroom and a separate study



For Sale
Please Call

View
ljhooker.com.au/437GGTJ

Contact
Dawie Olivier
0447 822 879
dolivier@ljhgc.com.au

Nykisha Brown
0435 990 266
nbrown@ljhgc.com.au

LJ Hooker

LJ Hooker Coomera
(07) 5585 7888

Disclaimer: All information contained therein is gathered from relevant third parties sources. We cannot guarantee or give any warranty about the information provided. Interested parties must rely solely on their own enquiries.

nook with a built-in counter, perfect for managing school assignments or home projects. The laundry room is thoughtfully equipped with extra storage, a stone benchtop, and a basin, catering to the practical needs of a busy household.

The heart of the home is an open-plan kitchen, dining, and living area, where families can gather and create cherished memories. The kitchen is a chef's delight, featuring a waterfall stone benchtop with bar stool seating, a walk in pantry, and stainless steel appliances, including an electric cooktop. The expansive living space, complete with air conditioning and a sliding door, leads to an alfresco area that's been tastefully tiled and includes an extended concrete slab perfect for outdoor entertainment.

Further benefits include a garden shed for additional storage, an electric hot water system, and the comfort of laminate flooring in the third and fourth bedrooms. The family bathroom does not disappoint, offering a bath, shower, stone benchtops, and floor-to-ceiling tiles, adding a sophisticated touch.

45 Foley Cres is not just a house; it's a home waiting to provide a safe haven and a lifetime of memories for its new owners.

Don't hesitate and miss the amazing opportunity to make this your dream home - contact Dawie Olivier, 0447 822 879 to schedule a viewing today!

Other than location, convenience and elegance, this property also offers:

- 4 bedrooms including master with walk in robe and en-suite
- 3 additional bedrooms of good size
- Stunning kitchen with high quality appliance, stone bench tops and walk in pantry
- Separate living areas
- Study nook
- Separate laundry with plenty of storage
- Electric hot water system
- Low maintenance front and backyard
- Double internal access garage with auto door

Why families love living in Pacific Cove Pimpama:

- Pacific Cove offers a peaceful escape from the hustle and bustle of city life, with lush greenery and serene surroundings.
- The area is known for its family-friendly atmosphere and community spirit, making it a great place for children to grow up.
- Parks and recreation areas, including a new recreation park, provide ample opportunities for outdoor fun and social interaction.
- Pacific Cove is situated between the Pacific Ocean and the Gold Coast hinterland, offering both coastal and hinterland access.
- The estate is conveniently located near schools, shopping centres, Costco, Bunnings and recreational facilities.
- It's also relatively close to the M1 and M3, providing easy access to Brisbane and other major hubs.
- Pacific Cove is a short drive to popular Gold Coast attractions like Movie World, Wet n' Wild, Dreamworld, and White Waterworld.
- It's also close to major shopping centres like Pimpama Junction and Westfield Coomera.

More About this Property

Property ID	437GGTJ
Property Type	House
House Size	223 m2
Land Area	375 m2
Including	Ensuite

Dawie Olivier 0447 822 879

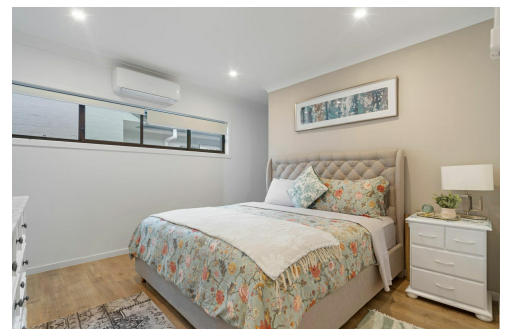
Sales Specialist | dolivier@ljhgc.com.au

Nykisha Brown 0435 990 266

Sales Specialist | nbrown@ljhgc.com.au

LJ Hooker Coomera (07) 5585 7888

The Hub, 5/90 Days Road, UPPER COOMERA QLD 4209
coomera.ljhooker.com.au | coomera@ljhgc.com.au



LJ Hooker

Disclaimer: All information contained therein is gathered from relevant third parties sources.
We cannot guarantee or give any warranty about the information provided. Interested parties must rely solely on their own enquiries.

LJ Hooker Coomera
(07) 5585 7888



45 Foley Crescent PIMPAMA

4 Beds | 2 Bathrooms | 2 Car Spaces | 223m²



All dimensions are approximate; they are subject to errors and inaccuracies and no liability will be accepted. Plans are shown for marketing purposes only.

LJ Hooker

**LJ Hooker Coomera
(07) 5585 7888**

Disclaimer: All information contained therein is gathered from relevant third parties sources. We cannot guarantee or give any warranty about the information provided. Interested parties must rely solely on their own enquiries.