



Pimpama, 4 Mornington Court

Hamptons Elegance ready to go!!!

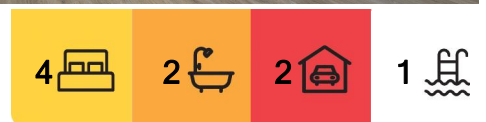
Welcome to 4 Mornington Court, Pimpama, a striking showcase of timeless elegance and refined coastal living. Perfectly positioned in a peaceful, family-friendly cul-de-sac, this exceptional Plantation built residence delivers premium comfort, effortless style, and upscale functionality, just 8 months young.

Defined by its Hamptons inspired design, this home boasts a flawless combination of soft neutral palettes, high ceilings, and bespoke finishes. From the grand entrance to the light-filled living zones, every detail has been thoughtfully curated to offer luxury without compromise.

Why you will love this home:

*Designer Hamptons facade with manicured landscaping and charming street appeal

*4 bedrooms plus study - including generous master retreat featuring a walk-in robe and luxe ensuite



For Sale
Contact Agent

View
Sat 7th Jun @ 10:45AM - 11:30AM

Contact
David Brown
0432 010 020
david.brown@ljhooker.com.au

Lucas Rupp
0406 249 324
lucas.rupp@ljhooker.com.au



Disclaimer: All information contained therein is gathered from relevant third parties sources. We cannot guarantee or give any warranty about the information provided. Interested parties must rely solely on their own enquiries.

LJ Hooker Oxenford
(07) 5632 8428

- *3 Living areas including spacious open plan living/dining flowing seamlessly to the travertine tiled entertaining area overlooking the crystal clear pool
- *Gourmet chef's kitchen with 900mm gas cooktop, stone benchtops and premium appliances
- *Designer bathrooms with quality fittings and elegant finishes
- *Ducted air-conditioning, ceiling fans, and high quality plantation shutters
- *Secure double garage with drive through access
- *Manicured low maintenance and fully fenced backyard ready for children or pets
- *Easy access to busses (just out the back gate) and surrounding park
- *Solar
- *401m2
- *Plantation built, approx. 8 months old

Set within minutes of top schools, local parks, Pimpama City Shopping Centre, and easy M1 access, this home offers a rare blend of serene living and supreme convenience. Whether you're upsizing, relocating, or seeking a lifestyle upgrade, this is a turnkey opportunity to own one of the area's finest homes.

Conveniently Located Near:

- 600m to Woolworths
- 1.9km to Gainsborough State School
- 1.5km to Gainsborough Greens Golf Club
- 2.7km St Joseph's College
- 3.7km to Pimpama City Shopping Centre
- 2.8km to Bunnings Warehouse
- 2.3km to King's Christian College Pimpama
- 7.2km to Dreamworld
- 5.7km to Westfield Coomera

Disclaimer:

We have in preparing this information used our best endeavours to ensure that the information contained herein is true and accurate, but accept no responsibility and disclaim all liability in respect of any errors, omissions, inaccuracies or misstatements that may occur. Prospective purchasers should make their own enquiries to verify the information contained herein.



LJ Hooker Oxenford
(07) 5632 8428

Disclaimer: All information contained therein is gathered from relevant third parties sources. We cannot guarantee or give any warranty about the information provided. Interested parties must rely solely on their own enquiries.

More About this Property

Property ID	E2J0C
Property Type	House
Land Area	401 m2
Including	Study Pool

David Brown 0432 010 020

Principal | LREA | david.brown@ljhooker.com.au

Lucas Rupp 0406 249 324

Sales Associate to David Brown | lucas.rupp@ljhooker.com.au

LJ Hooker Oxenford (07) 5632 8428

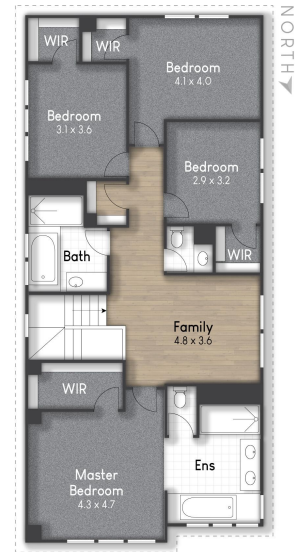
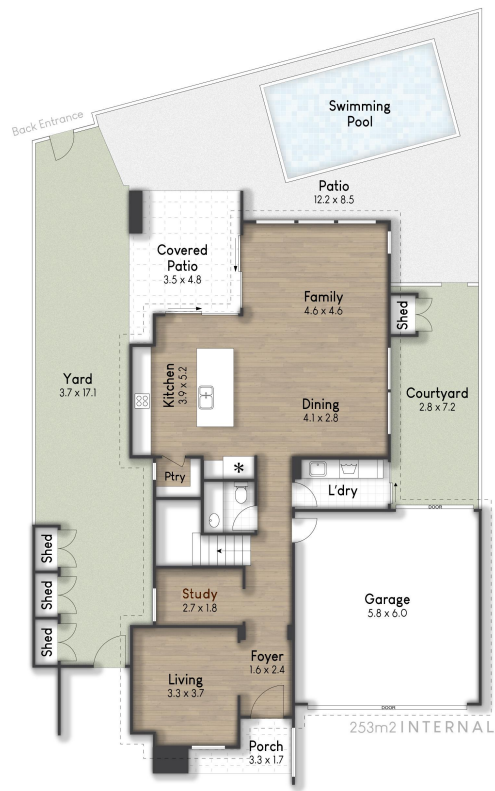
13/5 Michigan Drive, OXENFORD QLD 4210

oxenford.ljhooker.com.au | oxenford@ljhooker.com.au



Disclaimer: All information contained therein is gathered from relevant third parties sources. We cannot guarantee or give any warranty about the information provided. Interested parties must rely solely on their own enquiries.

LJ Hooker Oxenford
(07) 5632 8428



4 Mornington Ct, Pimpama

BED 4 BATH 2.5 CAR 2

Internal: 253 m² | External: 18 m² | Approx Total: 271 m²

Whilst every attempt has been made to ensure the accuracy of the floor plan contained here, measurements of doors, windows, rooms and any other item are approximate and no responsibility is taken for any error, omission, or misstatement. This plan is for illustrative purposes only and should only be used as such by any prospective purchaser.

